

Site KCMB 9B: Cornwallis River (Port Williams)

Date Assessed: 03/08/04

GPS Coordinates: N 45° 05' 42''
W 64° 24' 28''

Crossing Status: No restriction

Road Crossing: 130m steel bridge crossing Cornwallis River.

Crossing Condition: Intact with three large support structures in river channel.

Restriction Indicators: None

Downstream of Crossing

Creek: 120m wide, smooth flow except at base of bridge support structures

Land: Agricultural dykeland and fringe marsh.

Upstream of Crossing

Creek: 120m wide river, smooth flow except at base of bridge support structures

Land: Agricultural dykeland and fringe marsh.

Comments: Large bridge spanning main river channel which has little impact on tidal flow. Due to the size of the river channel, the three bridge supports likely have little impact on hydrology.

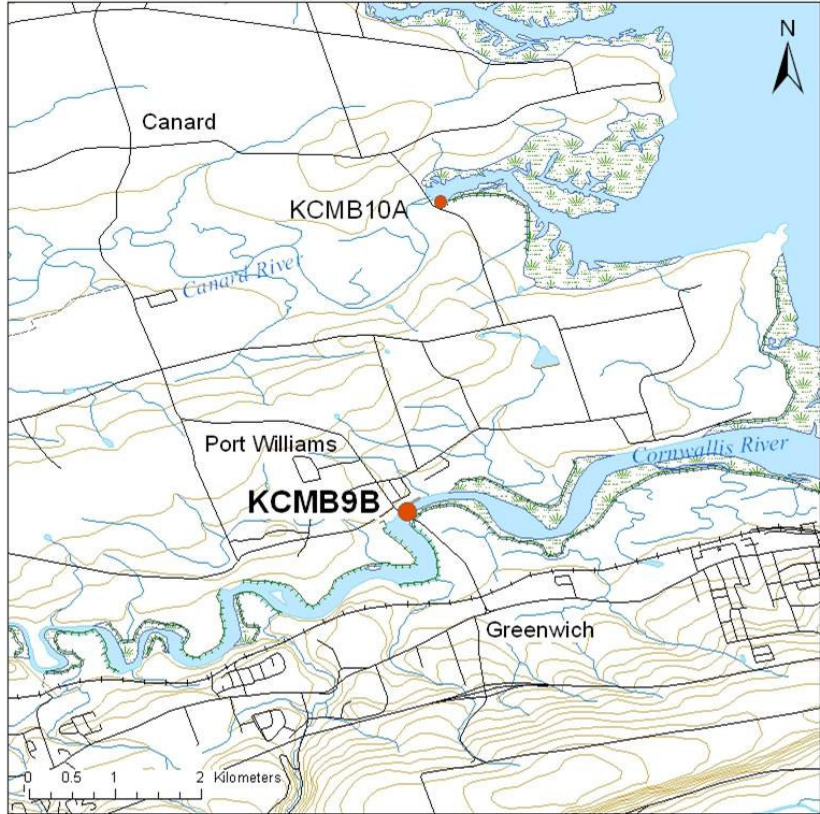




Figure 1. Cornwallis River bridge in Port Williams.

Figure 2. Downstream of crossing



Figure 3. Upstream of crossing

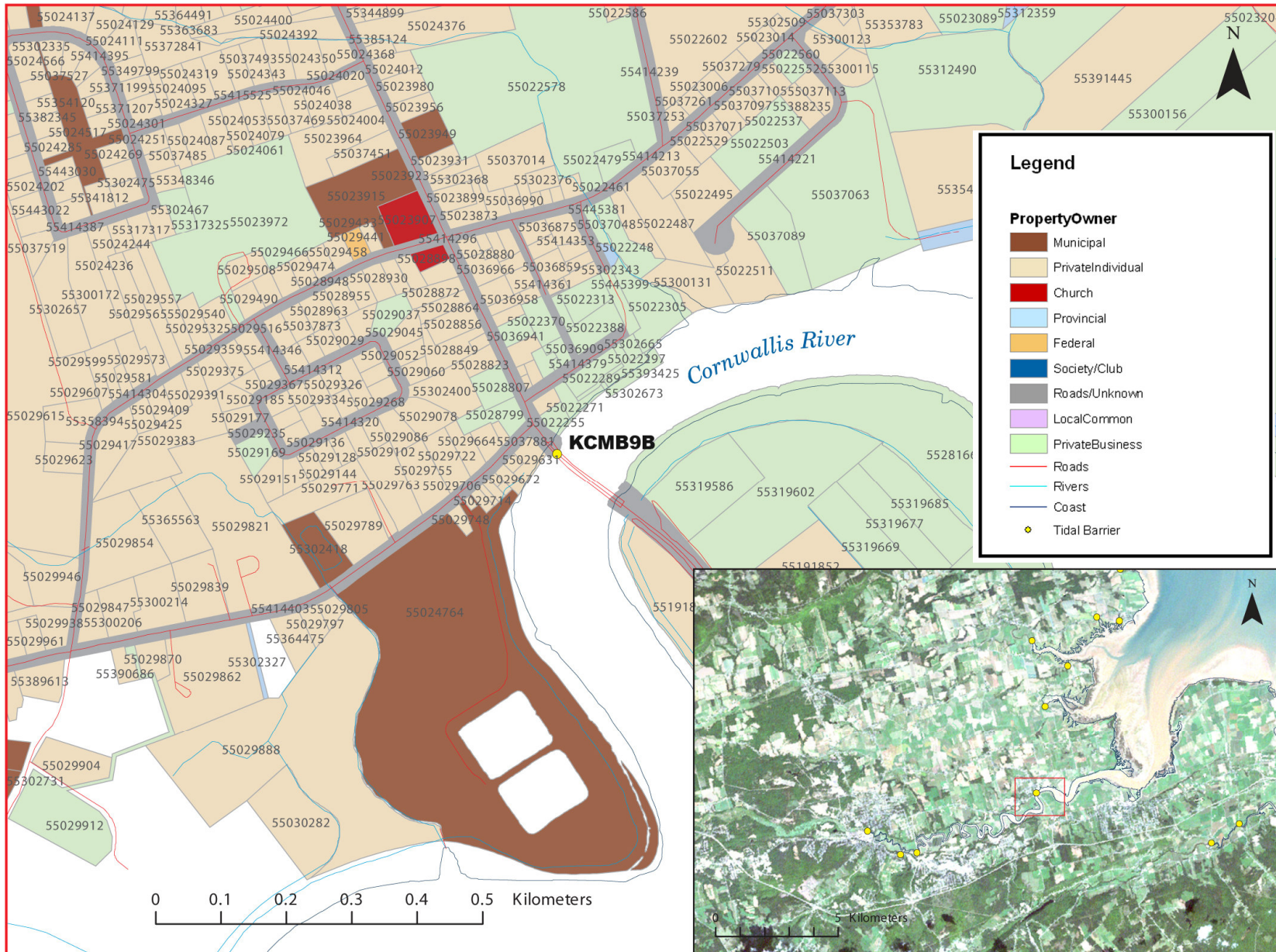


Figure 4: Property management and tidal barrier data for Nova Scotia (Service Nova Scotia, and Municipal Relations)



Figure 5: 2002
Aerial photograph
containing tidal
barrier data,
(1: 10,000)