

Site KCMB 8B: Kentville

Date Assessed: 03/08/04

GPS Coordinates: N 45° 04' 48.24''
W 64° 29' 41.22''

Crossing Status: No restriction

Road Crossing: Steel bridge crossing the Cornwallis River within the town of Kentville.

Crossing Condition: Intact

Restriction Indicators: None

Downstream of Crossing

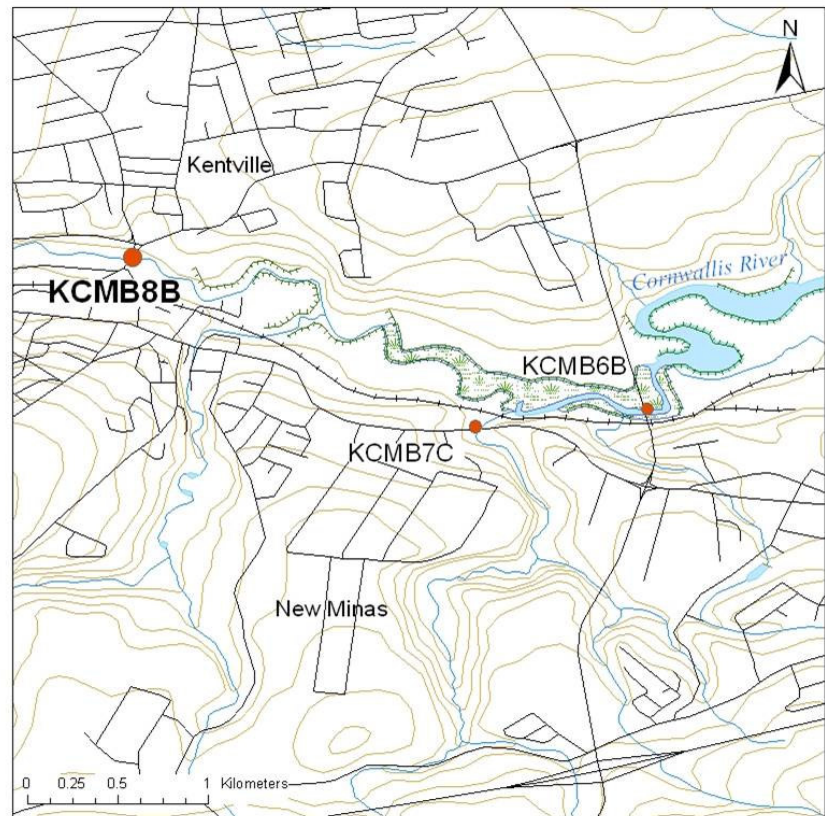
Creek: Smooth, straight flow

Land: River edge is forested but adjacent lands dominated by development (Town of Kentville).

Upstream of Crossing

Creek: Smooth, straight flow

Land: River edge is forested but adjacent lands dominated by development (Town of Kentville).



Comments: Bridge does not impact hydrology and crosses river near the upper reaches of tidal influence. Crossing size should be maintained when repair/replacement is required.



Figure 1. Downstream of crossing, forested.



Figure 2. Crossing view from upstream

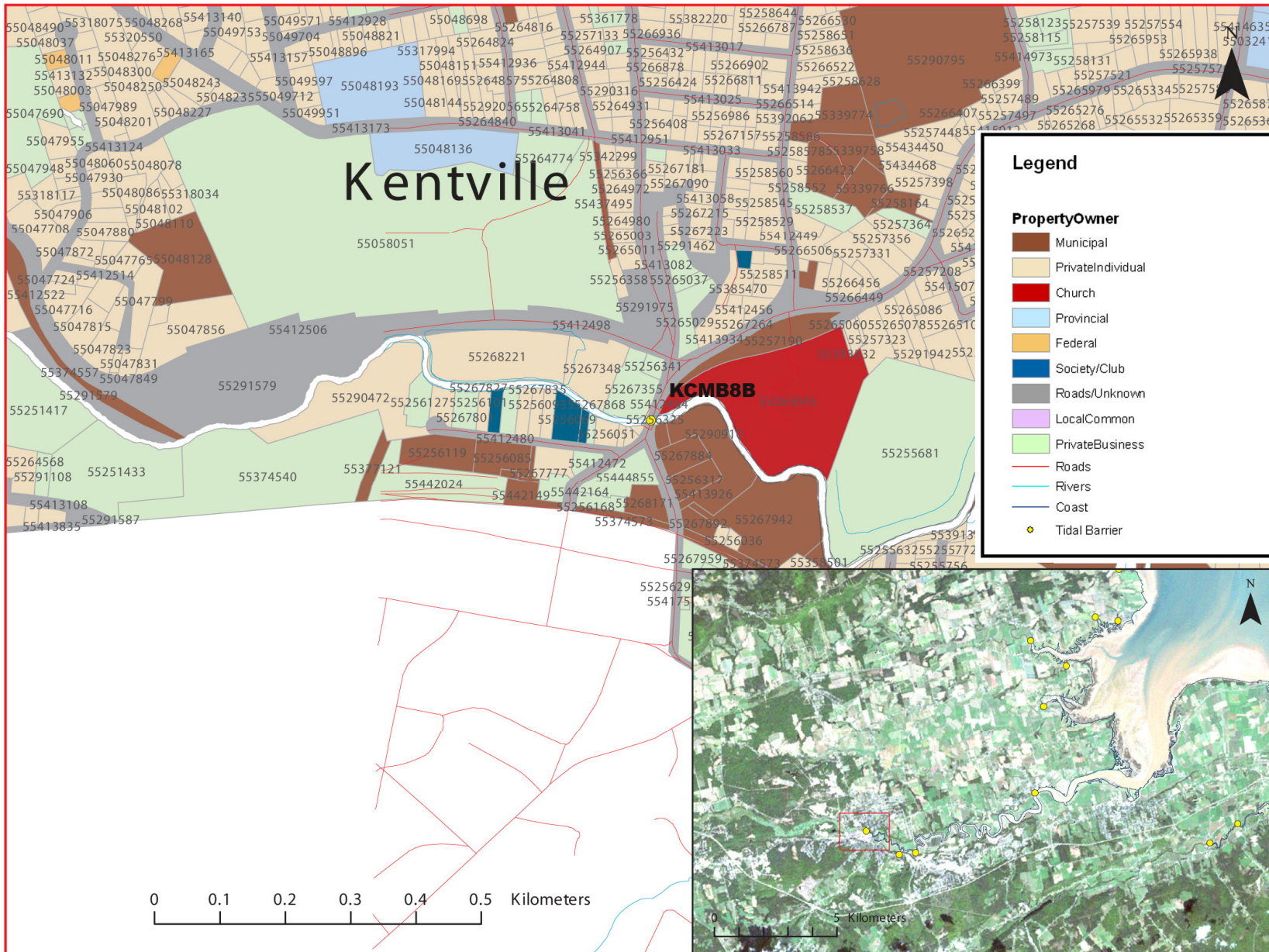


Figure 3: Property management and tidal barrier data for Nova Scotia (Service Nova Scotia, and Municipal Relations)



Figure 4: 2002 Aerial photograph containing tidal barrier data, (1: 10,000)