

Site KCMB 6B: Cornwallis River (Kentville)

Date Assessed: 04/09/03, 05/12/03

GPS Coordinates: N 45° 04' 21.5''
W 64° 28' 8.5''

Crossing Status: No restriction.

Road Crossing: 160m long concrete bridge.

Crossing Condition: Structure is intact.

Restriction Indicators: None

Downstream of Crossing

Creek: 130m wide with an angular smooth flow and bank slumping.

Land: Agricultural dykeland, a Ducks Unlimited impoundment and a sewage treatment facility (settling ponds).

Upstream of Crossing

Creek: 130m wide with an angular smooth flow and bank slumping.

Land: Agricultural dykeland

Comments: Road way consists of a causeway across the dykeland and a large bridge spanning the main river channel.

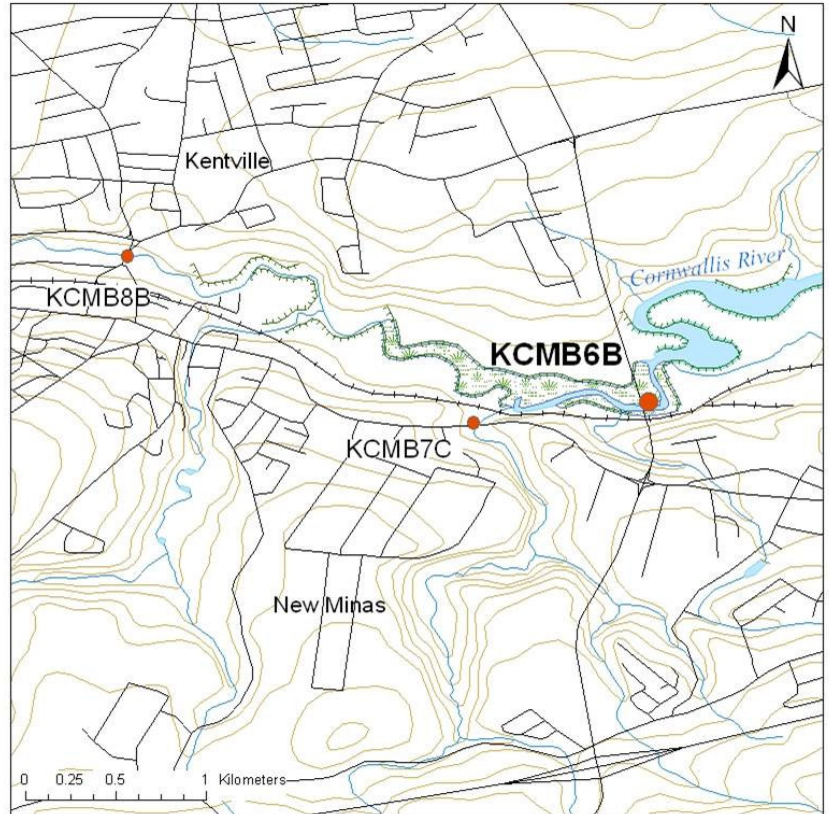




Figure 1. Upstream view of bridge

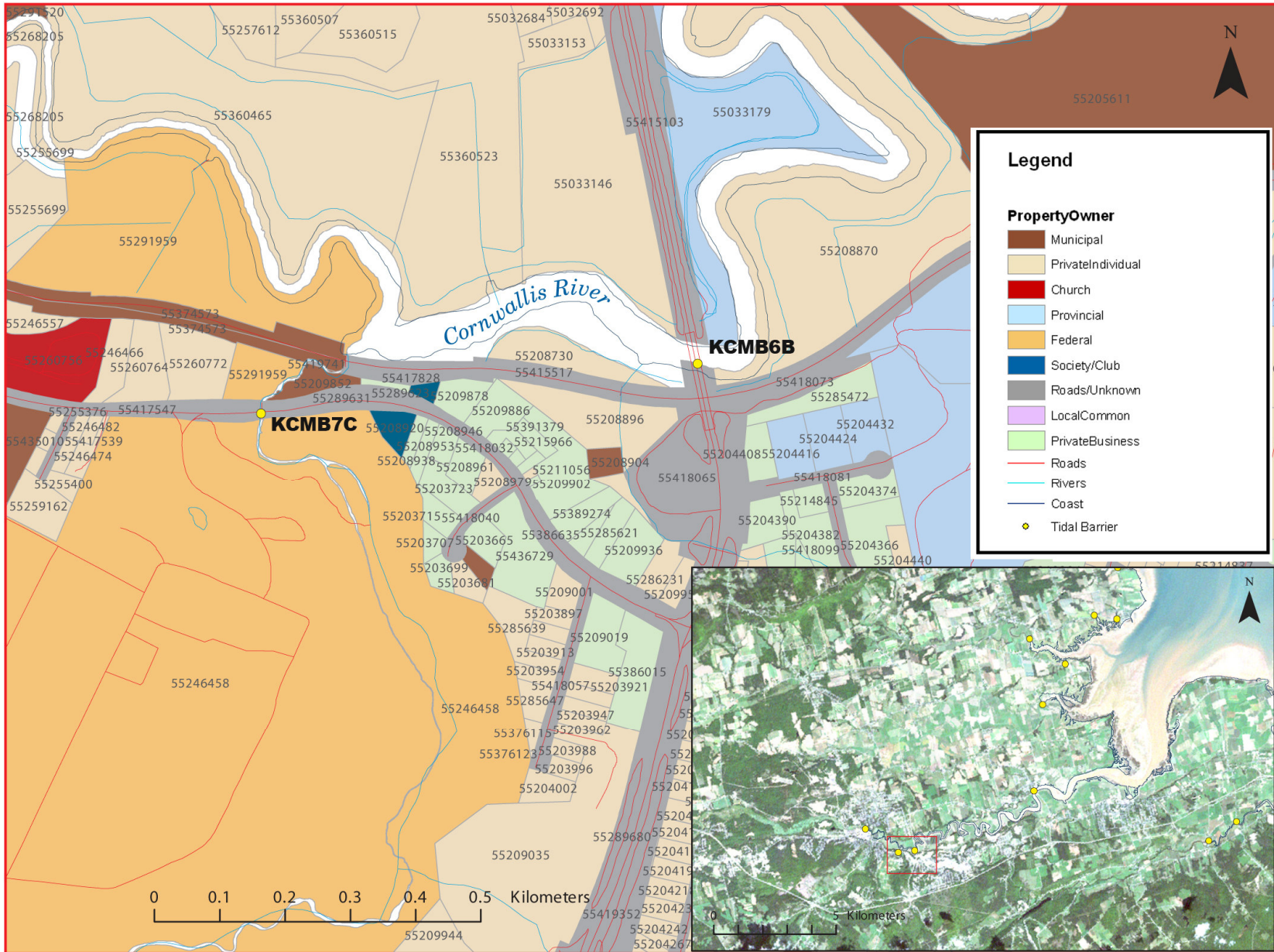


Figure 2:
Property management and tidal barrier data for Nova Scotia (Service Nova Scotia, and Municipal Relations)



Figure 3: 2002 Aerial photograph containing tidal barrier data, (1: 10,000)