

Site HCMB 2B: Cogmagun River

Date Assessed: 04/09/03,
05/12/03

GPS Coordinates: N 45° 05' 25''
W 64° 06' 02''

Crossing Status: No restriction.

Road Crossing: A 46m long wooden bridge, with an opening between the two large supports of 10m.

Crossing Condition: Fair condition.

Restriction Indicators: None

Downstream of Crossing

Creek: 7m wide with a smooth flow.

Land: At one time the land was probably farmed, but is now predominantly tidal wetland.

Upstream of Crossing

Creek: 7m wide with a smooth flow.

Land: At one time the land was probably farmed, but is now salt marsh.

Comments: When repair or replacement is necessary, maintain opening width. A new structure without the large in stream support structures would reduce effect on tidal flow and movement of ice in winter/spring.

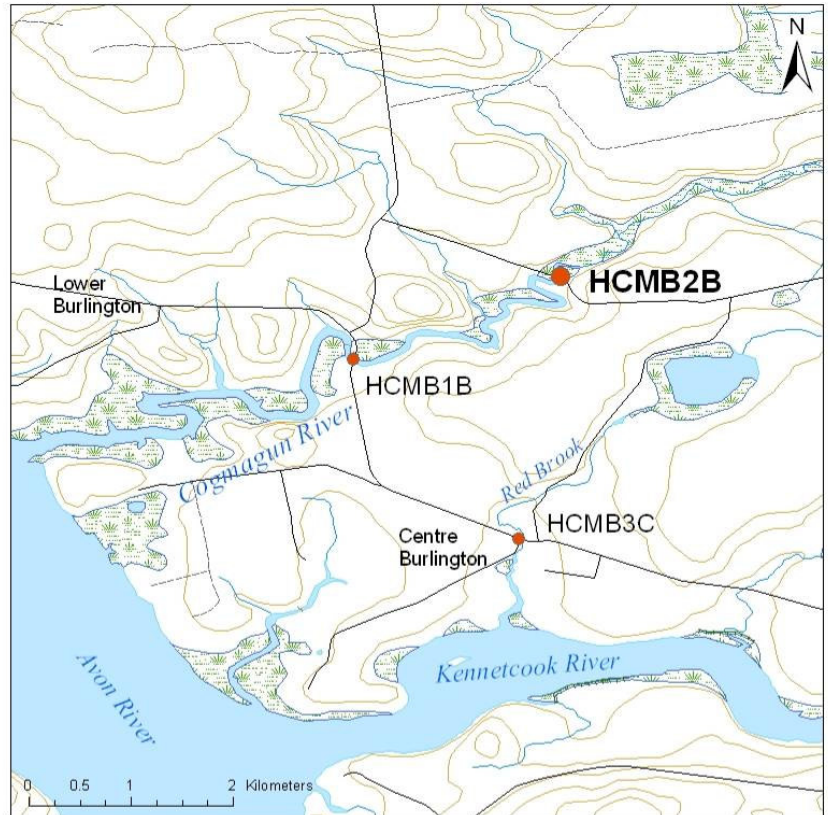


Figure 1: The large support structures narrow the opening under the bridge, but still allow adequate tidal flow.



Figure 2: *downstream*



Figure 3: *upstream*

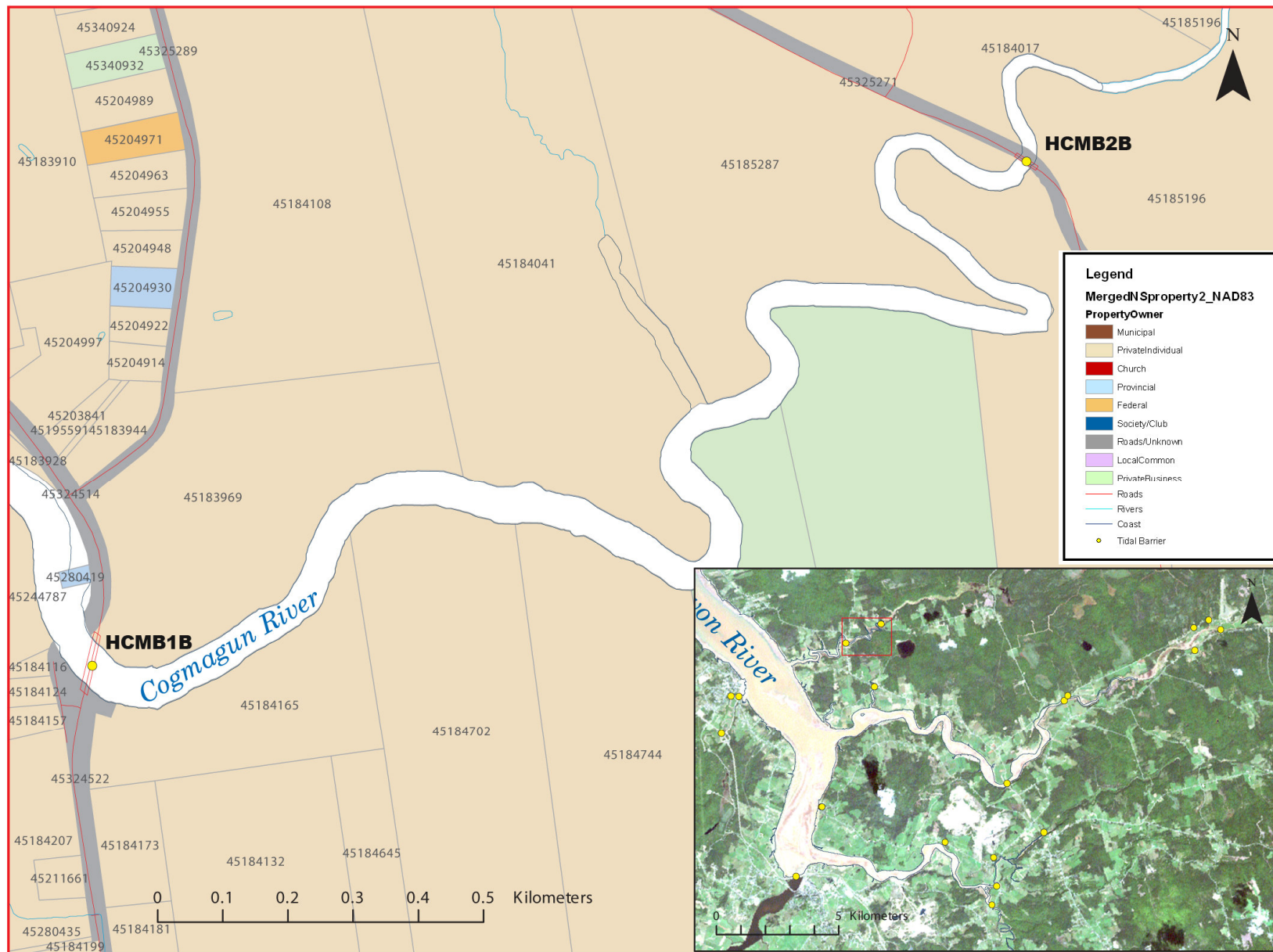


Figure 4: Property management and tidal barrier data for Nova Scotia (Service Nova Scotia, and Municipal Relations)

Air Photo Not Available in GIS Database

Access through Land Information Services:

Photo Number: 03308-12 or 04331-22