

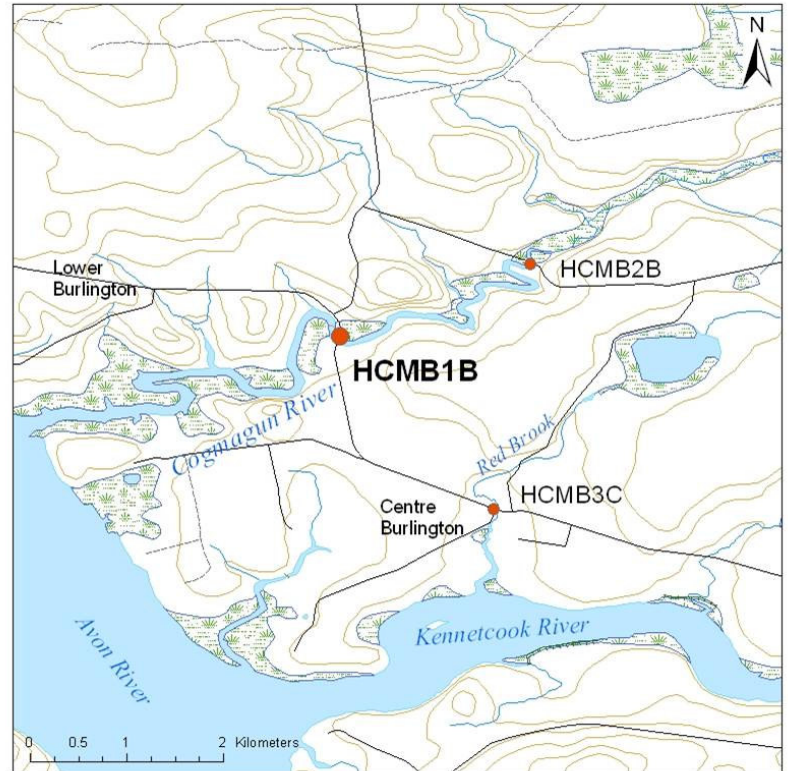
Site HCMB 1B: Cogmagun River (Hwy 215)**Date Assessed:** 04/09/03,
05/12/03**GPS Coordinates:** N 45° 05' 01''
W 64° 07' 06''**Crossing Status:** No restriction.**Road Crossing:** A 100m long concrete bridge.**Crossing Condition:** Structure is intact.**Restriction Indicators:** None**Downstream of Crossing****Creek:** 80m wide with a smooth flow and no problem with bank erosion.**Land:** One side of the river is bordered by a steep cliff, and the other has dykes running along the bank protecting farmland.**Upstream of Crossing****Creek:** 80m wide with a smooth flow and little evidence of bank erosion, stable channel.**Land:** One side of the river is cliff, and the other has dykes running along the bank protecting farmland.**Comments:** When repair or replacement is needed, maintain the 100m opening.**Figure 1:** *Downstream view of the bridge from the dyke.*



Figure 2: *Downstream*



Figure 3: *Upstream*

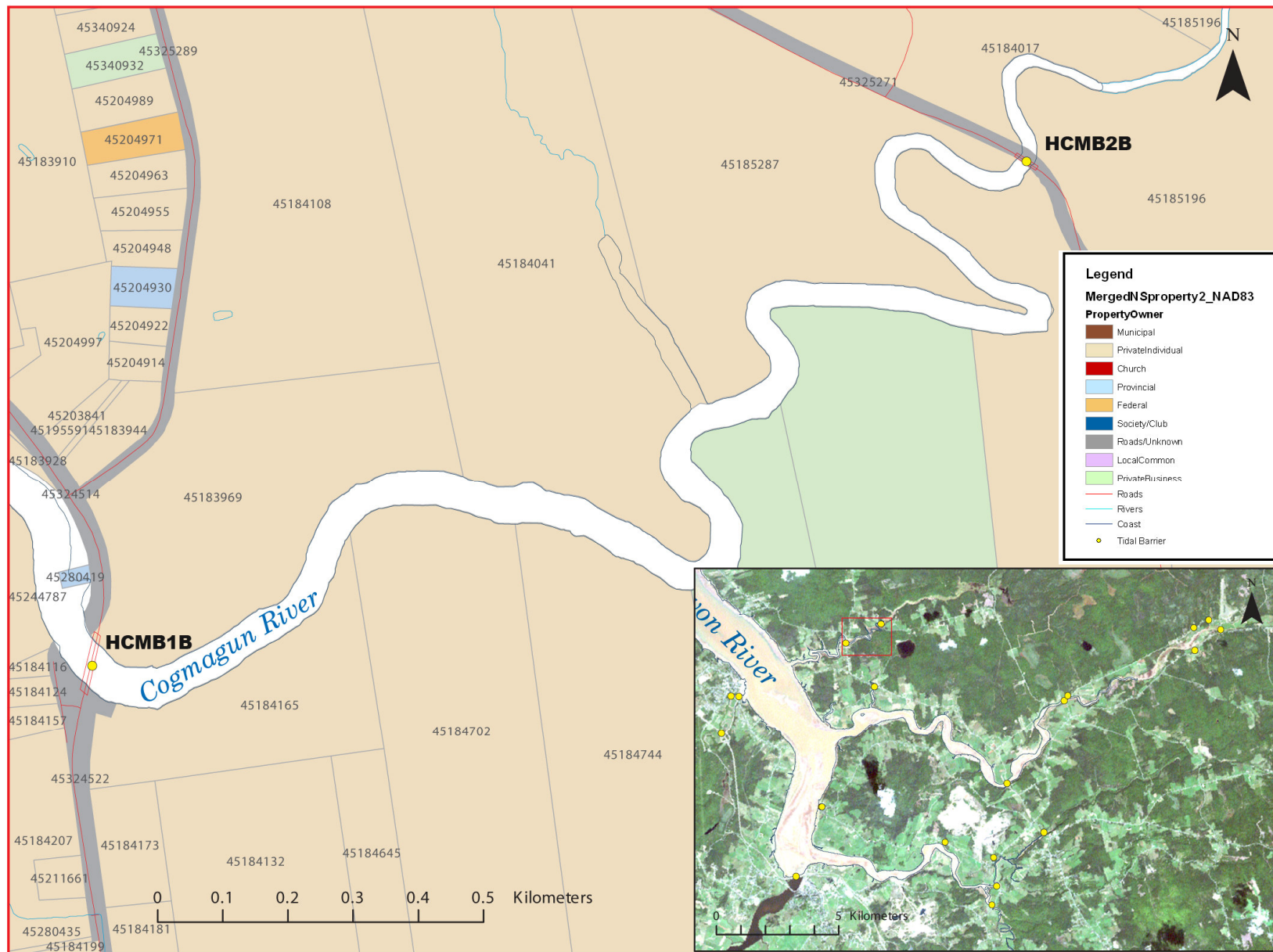


Figure 4: Property management and tidal barrier data for Nova Scotia (Service Nova Scotia, and Municipal Relations)



Figure 5: 2002 Aerial photograph containing tidal barrier data, (1: 10,000)