

Site HCMB 19B: St Croix River (Hwy 101)

Date Assessed: 04/09/03, 05/12/03

GPS Coordinates: N 44° 58' 02.8''  
W 64° 01' 49.1''

Crossing Status: No restriction.

Road Crossing: 50m long bridge.

Crossing Condition: Original design is intact.

Restriction Indicators: None

Downstream of Crossing

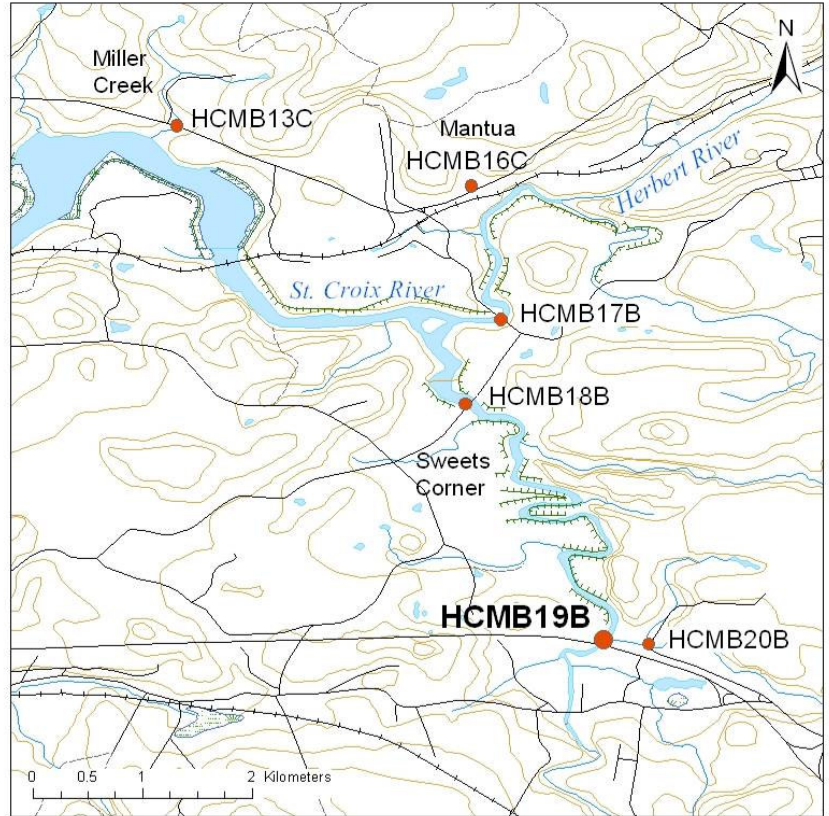
Creek: 20m wide with smooth flow.

Land: Agricultural dykeland.

Upstream of Crossing

Creek: 20m wide with smooth flow.

Land: Agricultural land.



Comments: Large bridge, reaching bank to bank with large support structures in middle of channel. Crossing planned to be replaced by divided highway. When replacing, new crossing should continue non restrictive trend, but with no support structure(s) in the channel. Be conscious of river meander pattern.

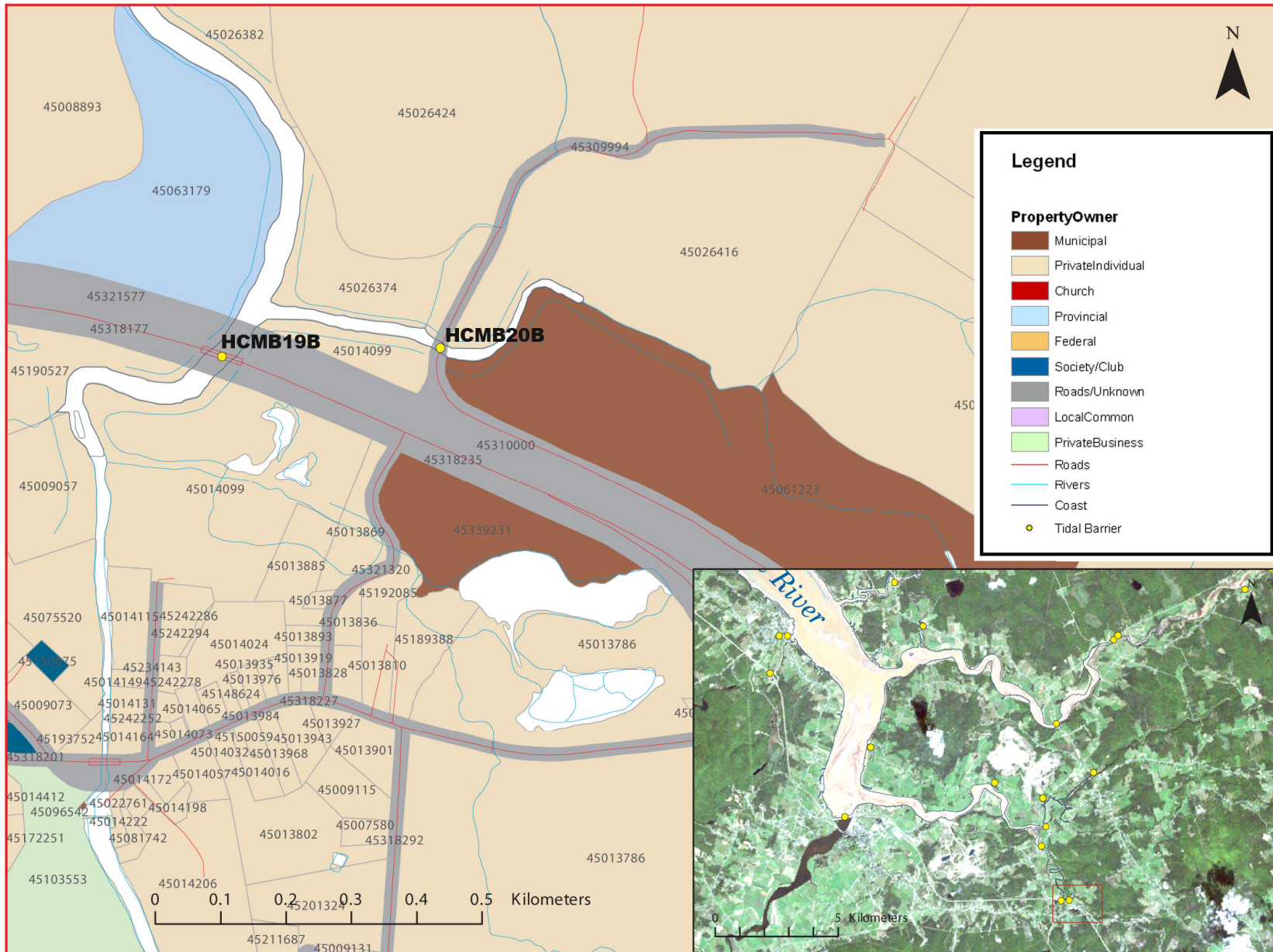


**Figure 1.** The large concrete supports don't seem to have an effect creek. Bridge is in good condition.

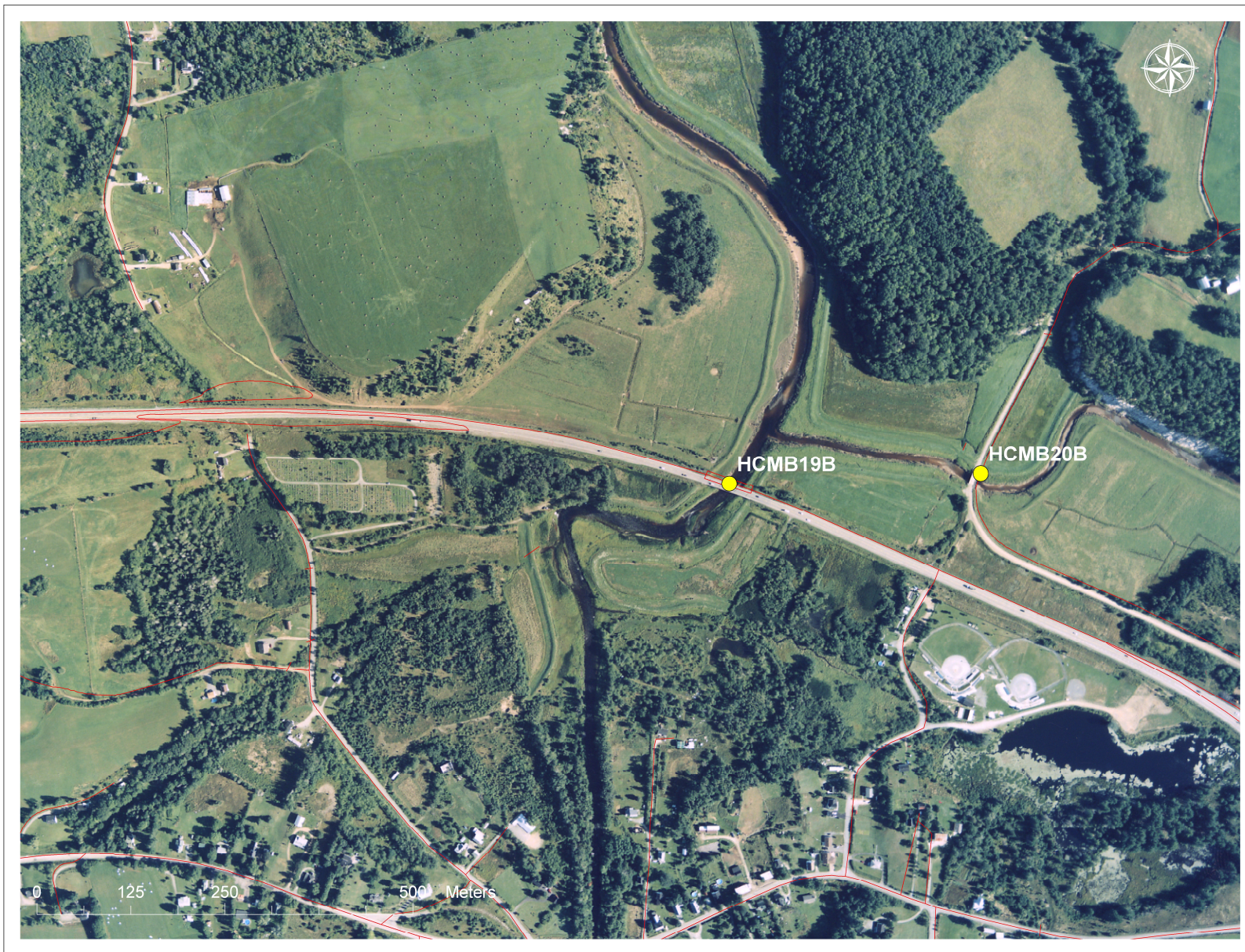
**Figure 2.** The dykes on each side of the creek are apparent. Photo taken looking downstream from the bridge.



**Figure 3.** Looking upstream from the bridge.



**Figure 4:** Property management and tidal barrier data for Nova Scotia (Service Nova Scotia, and Municipal Relations)



**Figure 5:** 2003 Aerial photograph containing tidal barrier data, (1: 10,000)