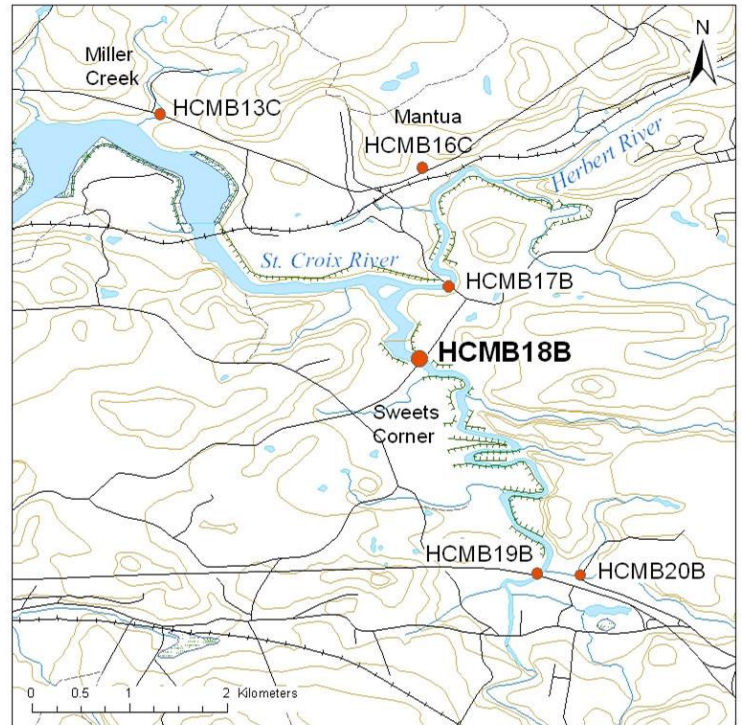


**Site HCMB 18B:** St. Croix River (Sweets Corner)**Date Assessed:** 04/09/03,  
05/12/03**GPS Coordinates:** N 44° 59' 14.1''  
W 64° 02' 27.7''**Crossing Status:** No restriction.**Road Crossing:**

An 83m long steel bridge, part of Trans Canada Highway 101. .

**Crossing Condition:** Structure is intact.**Restriction Indicators:** None**Downstream of Crossing****Creek:** 55m wide river with a smooth flow and no evidence of erosion or bank slumping.**Land:** Agricultural dykeland on both sides of river, actively farmed.**Upstream of Crossing****Creek:** 55m wide river with a smooth flow and no evidence of erosion or band slumping.**Land:** Agricultural dykeland on both sides of the river, actively farmed.**Comments:** Large bridge spanning main river channel with several concrete support structures within river channel but with little adverse impact. This section of Highway 101 is planned to be upgraded to a divided highway in the next couple of years. New crossings should continue the non restrictive trend of this crossing. Salt marsh restoration opportunities may exist along this river in dyked areas no longer viable as farmland.

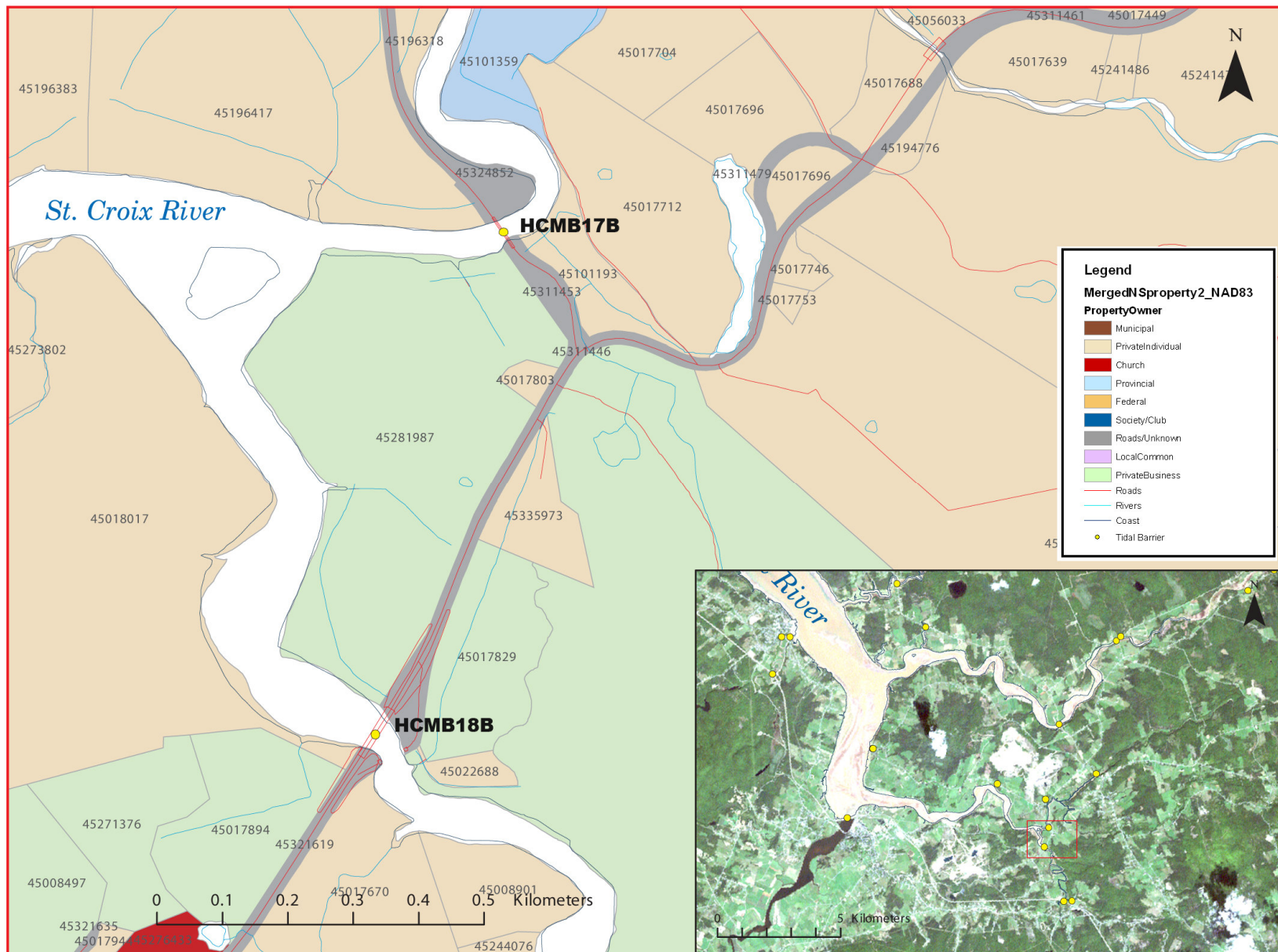
**Figure 1:** A dyke is visible on the far bank. The large concrete support structures seem to have very little effect on the flow of the river.



**Figure 2:** *downstream*



**Figure 3:** *upstream*



**Figure 4:** Property management and tidal barrier data for Nova Scotia (Service Nova Scotia, and Municipal Relations)



**Figure 5:** 2002 Aerial photograph containing tidal barrier data, (1: 10,000)