

Site HCMB 17B: Herbert River

Date Assessed: 04/09/03,
05/12/03

GPS Coordinates: N 44° 59' 39.5''
W 64° 02' 18.7''

Crossing Status: No restriction.

Road Crossing:
66m concrete and steel bridge with an opening width of 56m.

Crossing Condition:
Original design intact.

Restriction Indicators: None

Downstream of Crossing

Creek: 40m creek with smooth flow.

Land: Tidal wetland.

Upstream of Crossing

Creek: 40m creek with smooth flow.

Land: Small fringe marsh and agricultural dykeland.

Comments: Large bridge reaching from bank to bank. Area upstream and downstream a mix of low salt marsh habitat and agricultural dykeland. Railway crossing dykeland aligning one section of marsh assists dyking in the protection of farmland. Maintain size of bridge.

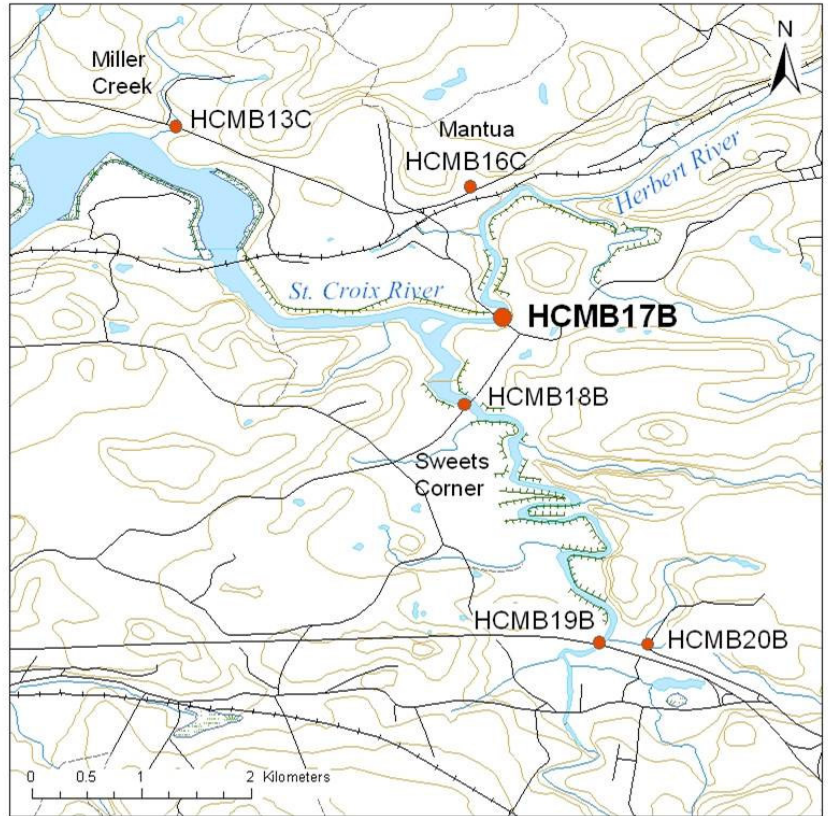


Figure 1: There are boulders on each side of the river for bank support, but generally appears to be above the high water line.



Figure 2: *downstream*



Figure 3: *upstream*

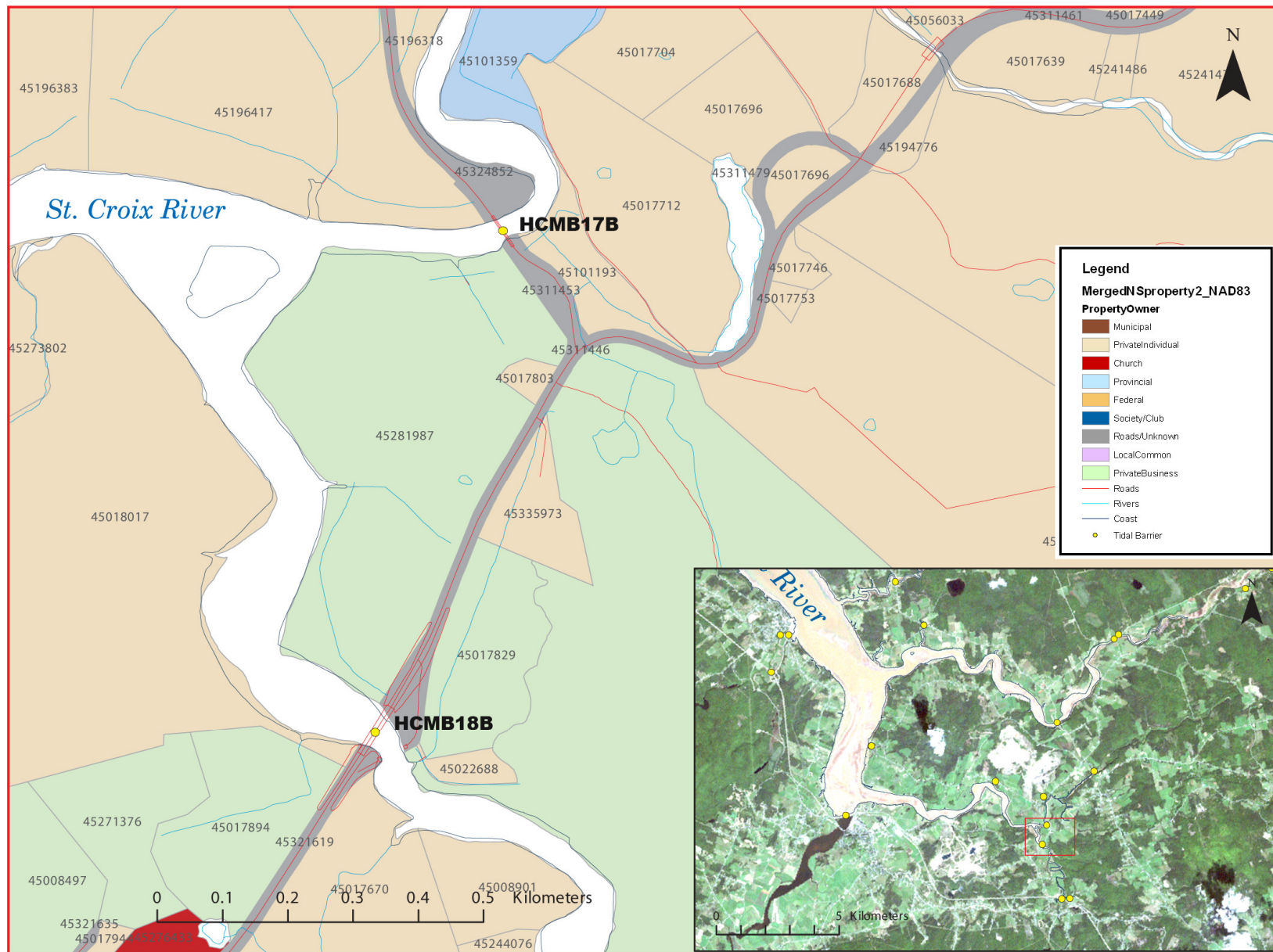


Figure 4: Property management and tidal barrier data for Nova Scotia (Service Nova Scotia, and Municipal Relations)



Figure 5: 2002 Aerial photograph containing tidal barrier data, (1: 10,000)