

Site HCMB 16C: Mantua

Date Assessed: 04/09/03,
05/12/03

GPS Coordinates: N 45° 00' 17.4''
W 64° 02' 25.6''

Crossing Status: No longer tidal

Road Crossing: Steel culvert with a 0.5m diameter.

Crossing Condition: Structure is intact.

Restriction Indicators: None

Downstream of Crossing

Creek: 0.2m wide stream with a smooth flow.

Land: There is a rail crossing and a dyke downstream, and area between crossing and railway dominated by freshwater wetland species.

Upstream of Crossing

Creek: 0.2m wide stream with a smooth flow.

Land: Freshwater wetland with quick rise in elevation. Residential property located adjacent to area.

Comments: Under current hydrologic conditions the size and placement of culvert is not representing a problem. However, if downstream structures are modified to allow for improved tidal flow, this crossing would need to be re-evaluated. .

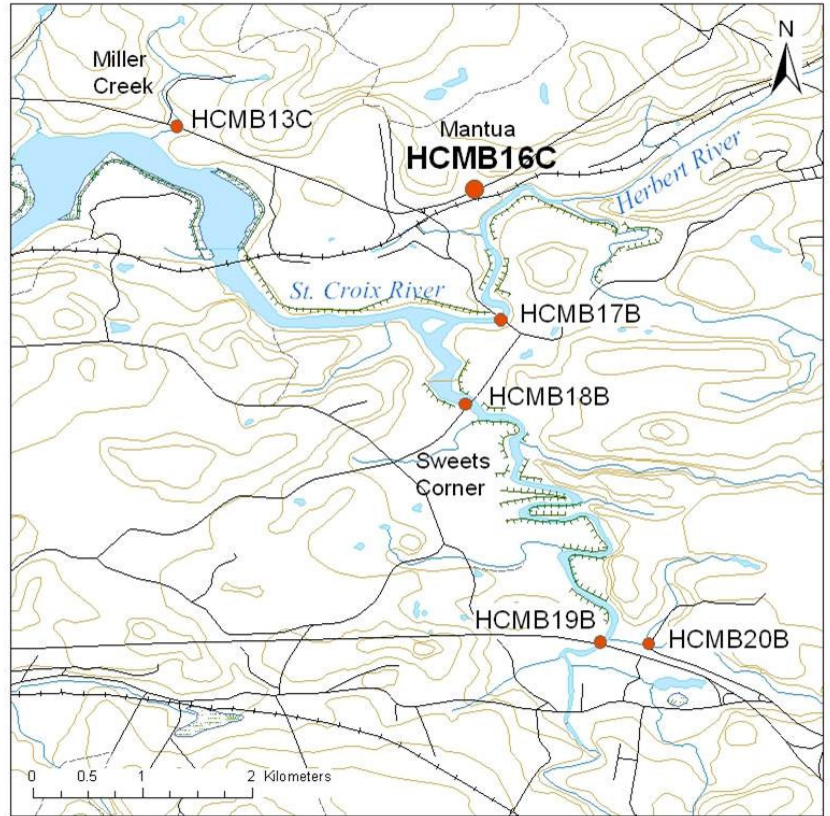




Figure 1: *Downstream end of culvert and wetland surface.*

Figure 2: *Upstream of the culvert is fresh with cattails and other freshwater vegetation evident.*



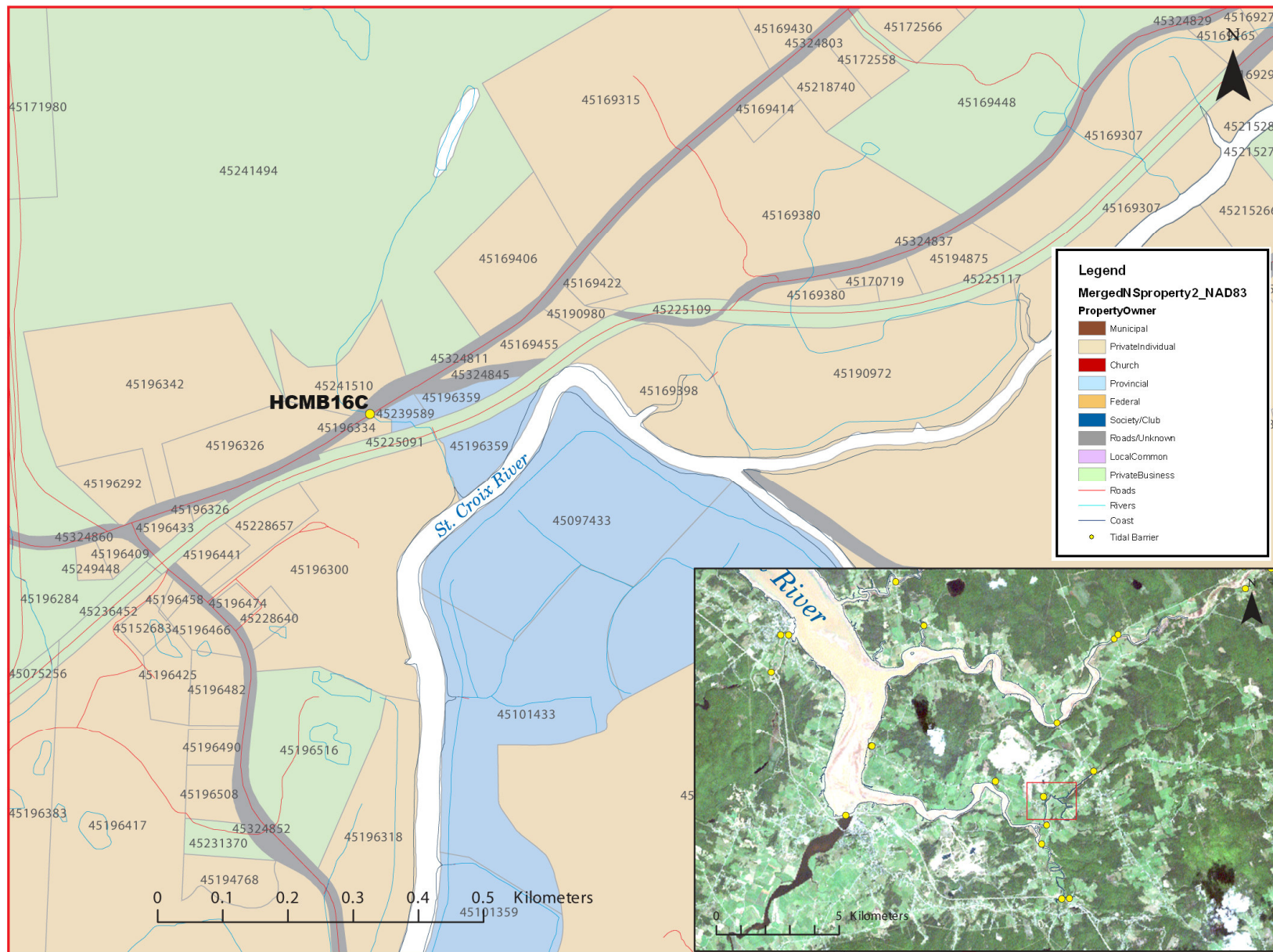


Figure 3: Property management and tidal barrier data for Nova Scotia (Service Nova Scotia, and Municipal Relations)

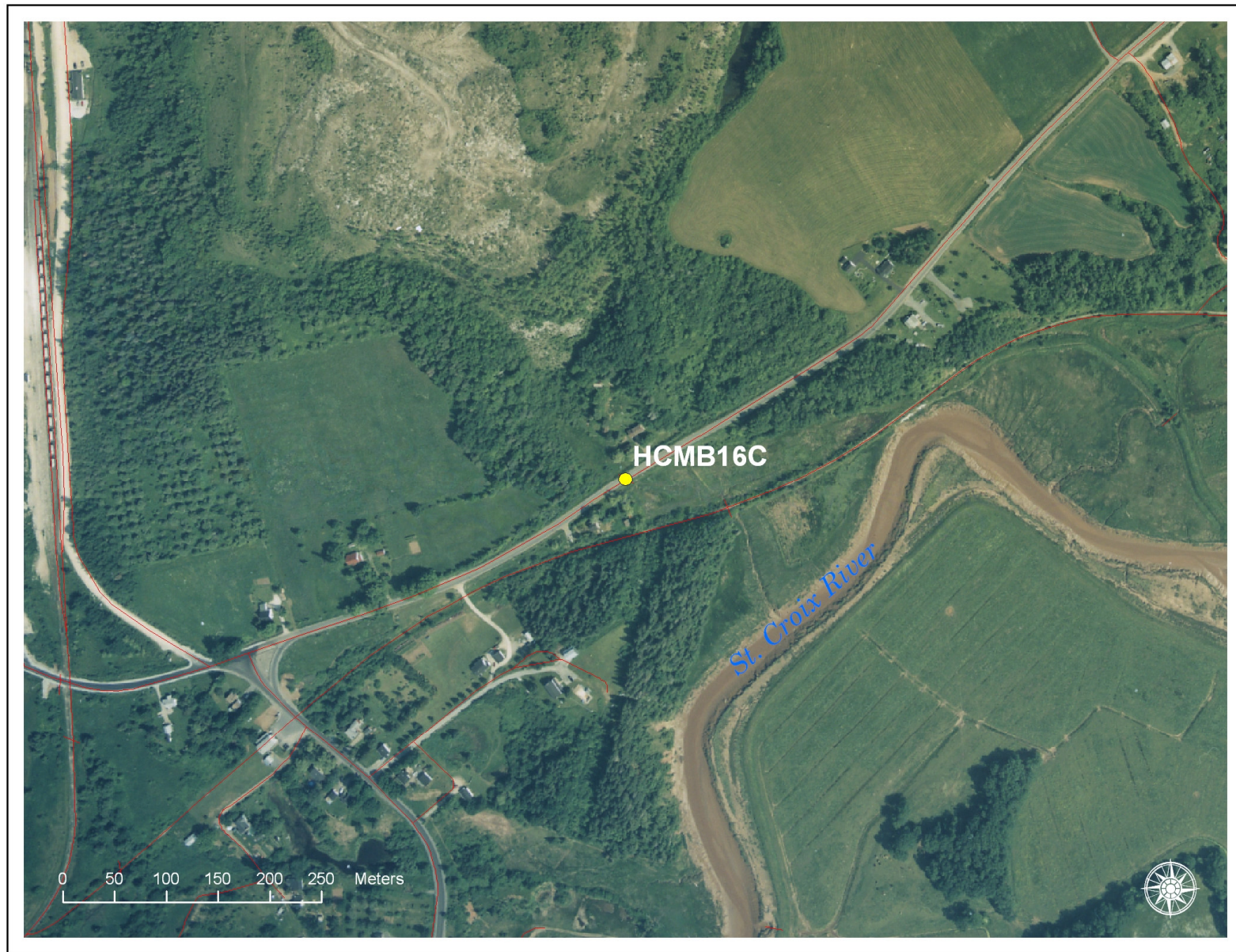


Figure 4: 2002 Aerial photograph containing tidal barrier data, (1: 10,000)