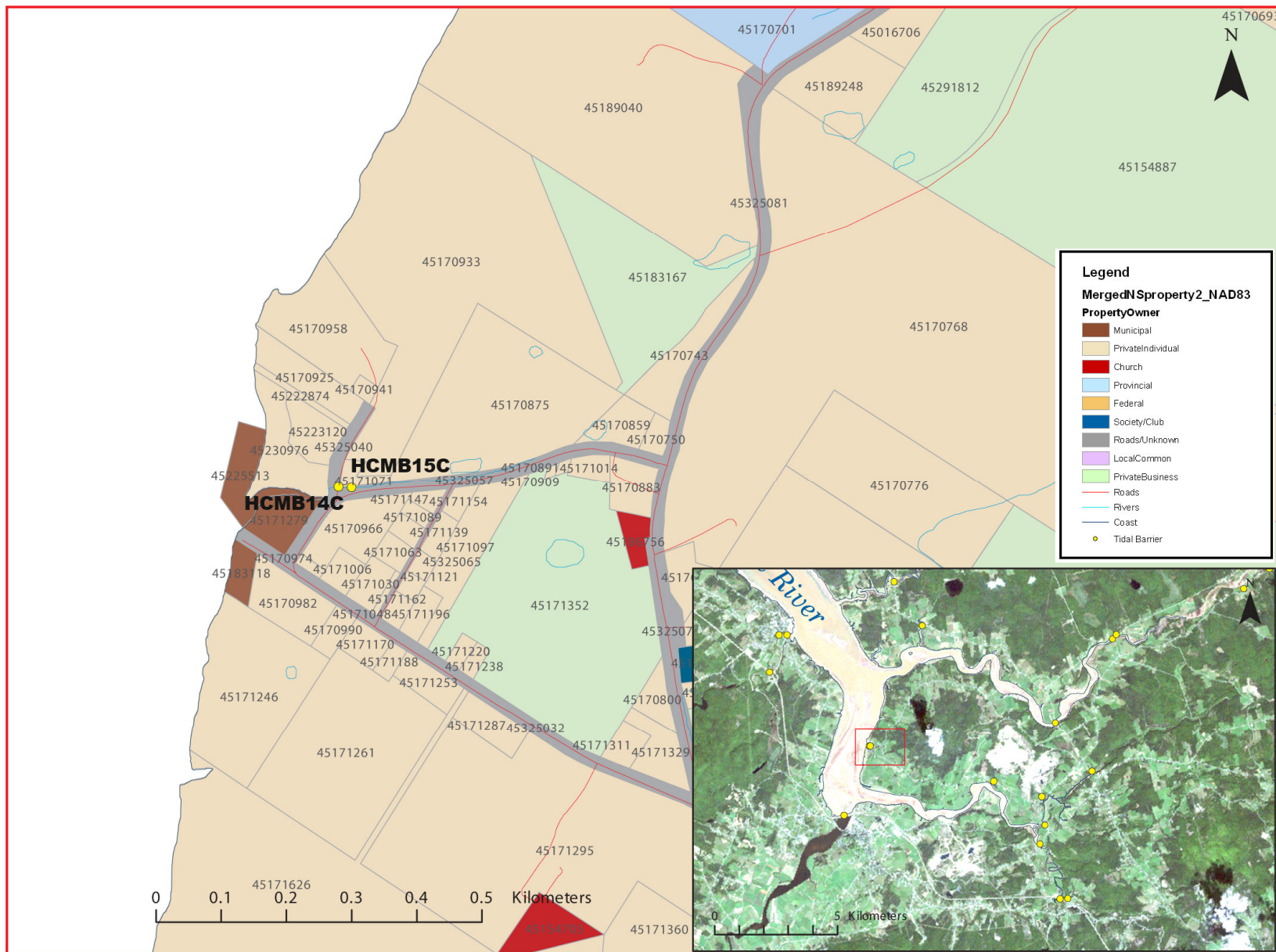


Site HCMB 15C: Avondale

Date Assessed: 04/09/03,  
05/12/03GPS Coordinates: N 45° 01' 21.0''  
W 64° 07' 47.4''**Crossing Status:** No restriction.**Road Crossing:** Concrete culvert, 0.5m  
in diameter.**Crossing Condition:** Poor to fair  
condition.**Restriction Indicators:** None**Downstream of Crossing****Creek:** Basically a drainage ditch leading  
to a small stream flowing to crossing  
HCMB14C.**Land:** Small wetland area fringed by a  
road and upland woodland.**Upstream of Crossing****Creek:** 0.5m wide with even flow.**Land:** Quick rise in elevation to surrounding agricultural land.**Comments:** Both ends of culvert could benefit from site cleanup but not critical to function. Culvert drains a small wetland area upstream bordered by road and agricultural land.**Figure 1:** Downstream view of the culvert  
with the gravel build up and the pool.



**Figure 2:** *The farm upstream of the culvert and the obvious elevation rise.*



**Figure 3:** Property management and tidal barrier data for Nova Scotia (Service Nova Scotia, and Municipal Relations)



**Figure 4:** 2002 Aerial photograph containing tidal barrier data, (1: 10,000)