

**Site N8C:** King Creek

**Date Assessed:** 08/05/01

**GPS Coordinates:** N 45 18' 36.1''  
W 63 40' 16.0''

**Crossing Status:** Partial restriction

**Road Crossing:** Culvert (wooden box), 2 chambers 2 ½ m each

**Crossing Condition:** Intact

**Restriction Indicators:**

- Difference in water level
- Bank slumping
- Difference in vegetation
- Slack water
- Scour pool

**Downstream of Crossing**

**Creek:** 10m wide, bank slumping, scour pool, slack water.

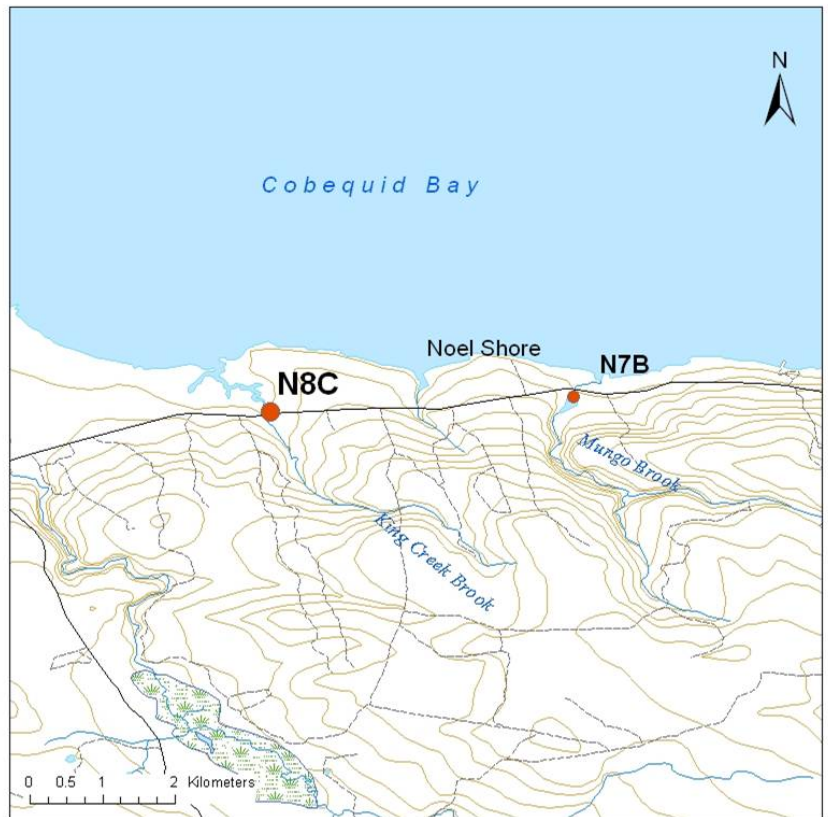
**Land:** Salt marsh, agriculture (grazing)

**Upstream of Crossing**

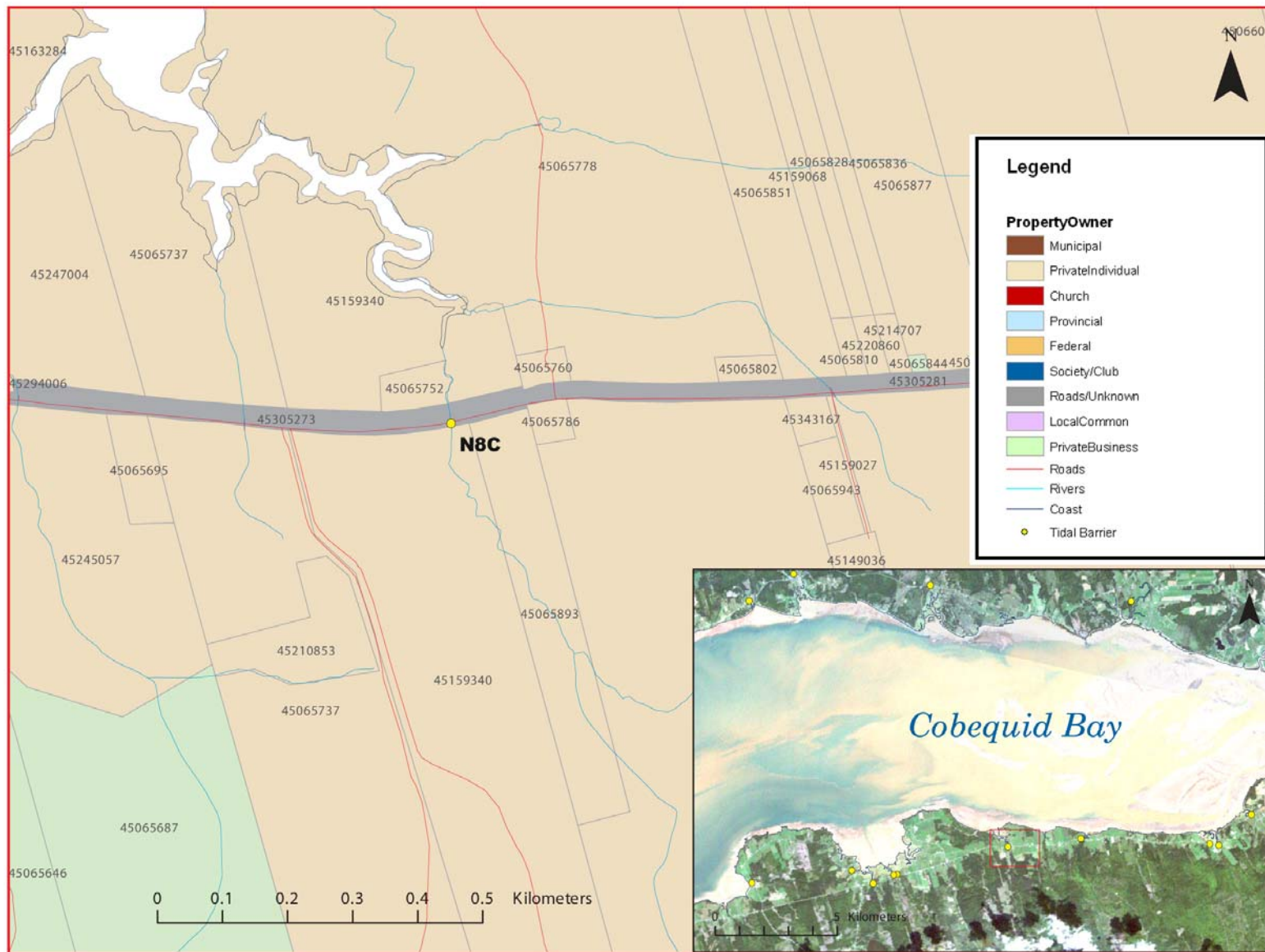
**Creek:** 10m wide, no water flowing at time of assessment, possible blockage.

**Land:** Old floodplain, animal crossing and possibly grazing

**Comments:** Enlarge and lower culvert



**No Pictures Available**



**Figure 1:**  
*Property management and tidal barrier data for Nova Scotia (Service Nova Scotia, and Municipal Relations)*

Air Photo Not Available in GIS Database

Access through Land Information Services:

Photo Number: 04320-169