

**Site N6C:** Stirling Marsh

**Date Assessed:** 08/05/01

**GPS Coordinates:** N 45 18' 41.3''  
W 63 33' 54.6''

**Crossing Status:** Partial restriction

**Road Crossing:** Culvert (wooden box)  
≥ 1m

**Crossing Condition:** Intact, woody  
debris piled around opening

**Restriction Indicators:**

- Difference in water level
- Difference in vegetation
- Scour pool
- Bank slumping

**Downstream of Crossing**

**Creek:** <2m, straight flow, bank  
slumping and scour pool

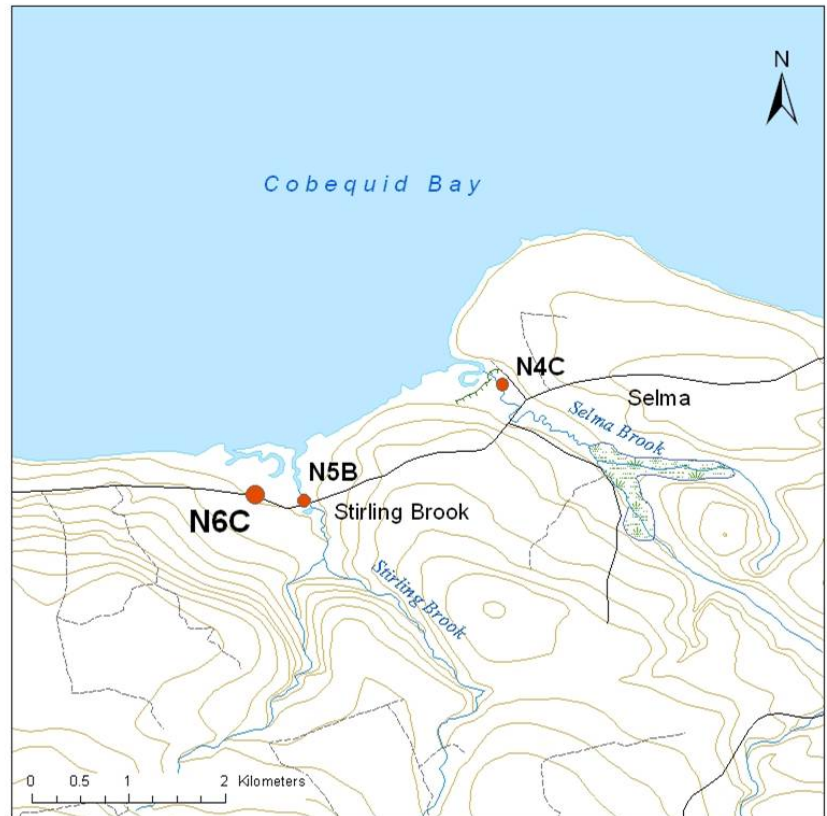
**Land:** Salt marsh, partial dyking and  
grazing

**Upstream of Crossing**

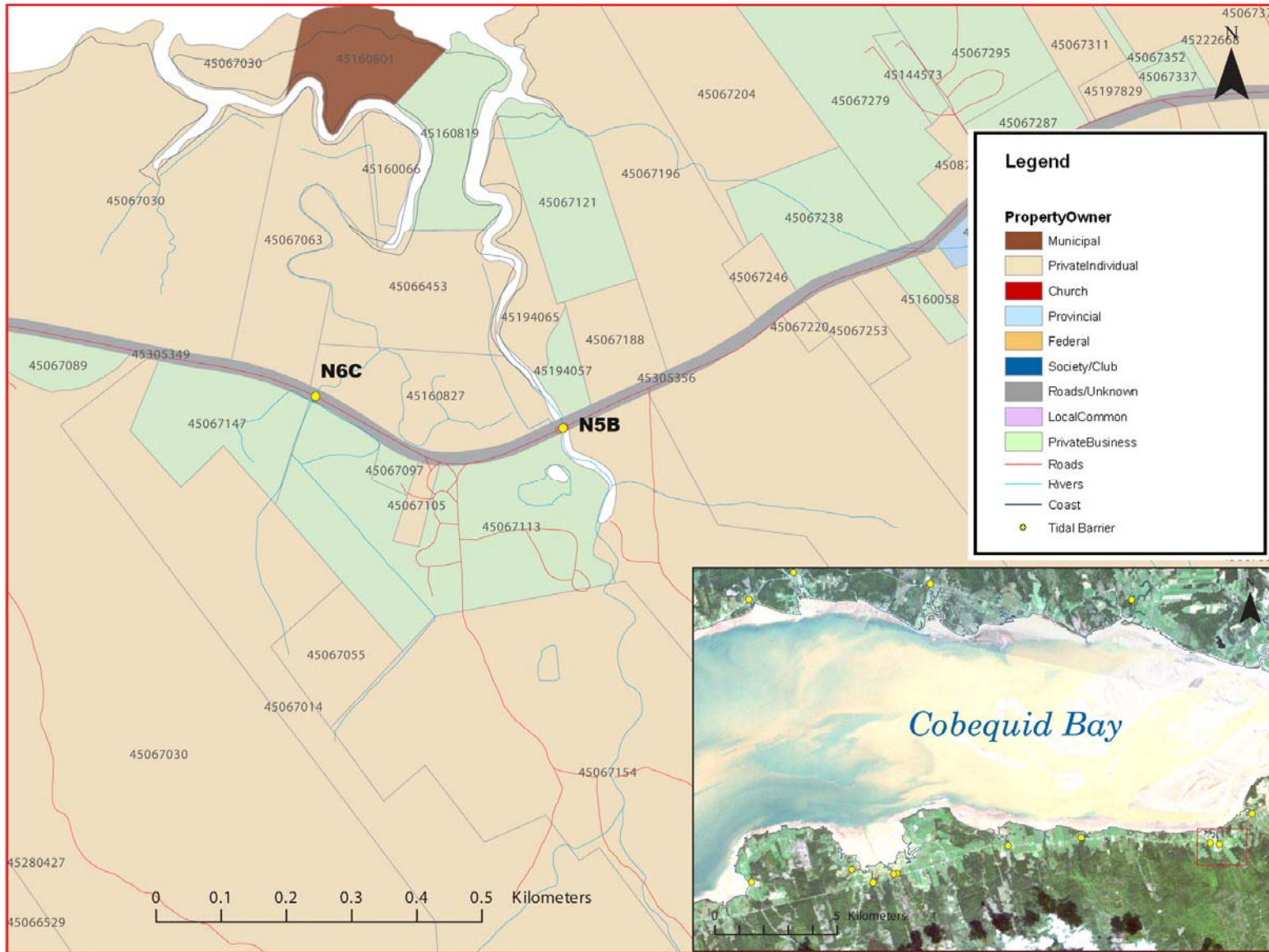
**Creek:** <2m, scour pool, straight flow

**Land:** Freshwater marsh, adjacent agriculture

**Comments:** Enlarge and lower culvert opening, channel enhancement and repair.



No Pictures Available



**Figure 1:**  
*Property management and tidal barrier data for Nova Scotia (Service Nova Scotia, and Municipal Relations)*

Air Photo Not Available in GIS Database

Access through Land Information Services:

Photo Number: 04320-178