

Site N4C: Selma

Date Assessed: 08/05/01

GPS Coordinates: N 45 19' 18.5''
W 63 32' 31.2''

Crossing Status: Partial restriction

Road Crossing: Culvert (wooden box), 1m

Crossing Condition: Top of culvert beginning to collapse

Restriction Indicators:
Difference in water levels
Scour pool
Bank slumping

Downstream of Crossing

Creek: Smooth, straight flow, bank slumping, scour pool

Land: Dyke and outer marsh

Upstream of Crossing

Creek: Smooth, straight flow, bank slumping, scour pool

Land: Mix of fresh and salt marsh, woods and residential property

Comments: Enlarge and lower opening

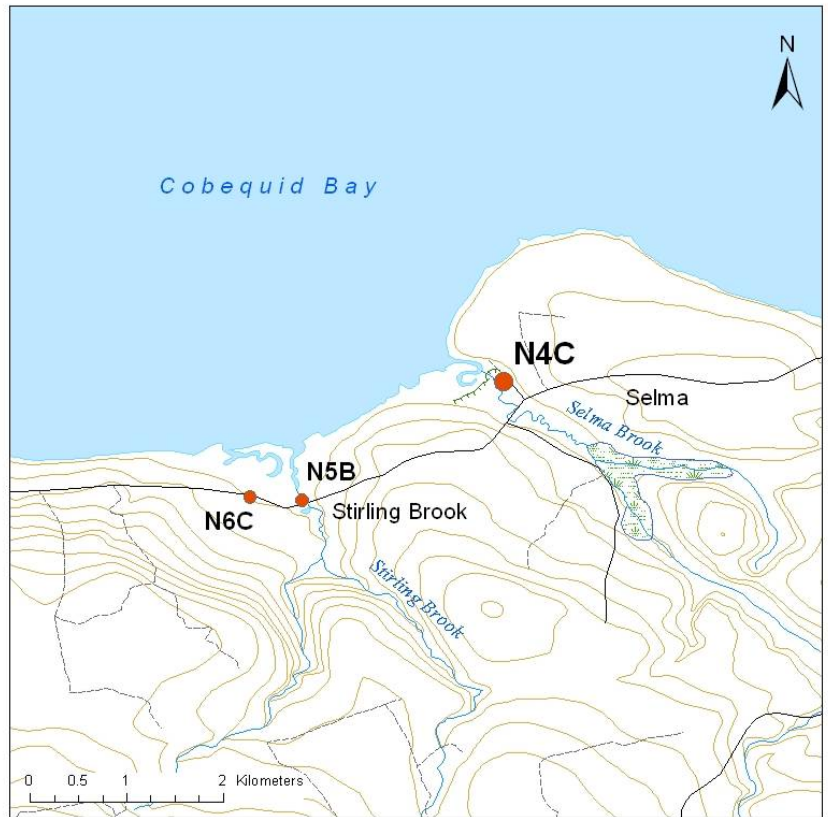


Figure 1. Downstream view of crossing

Figure 2. Downstream view of crossing



Figure 3. Downstream of crossing

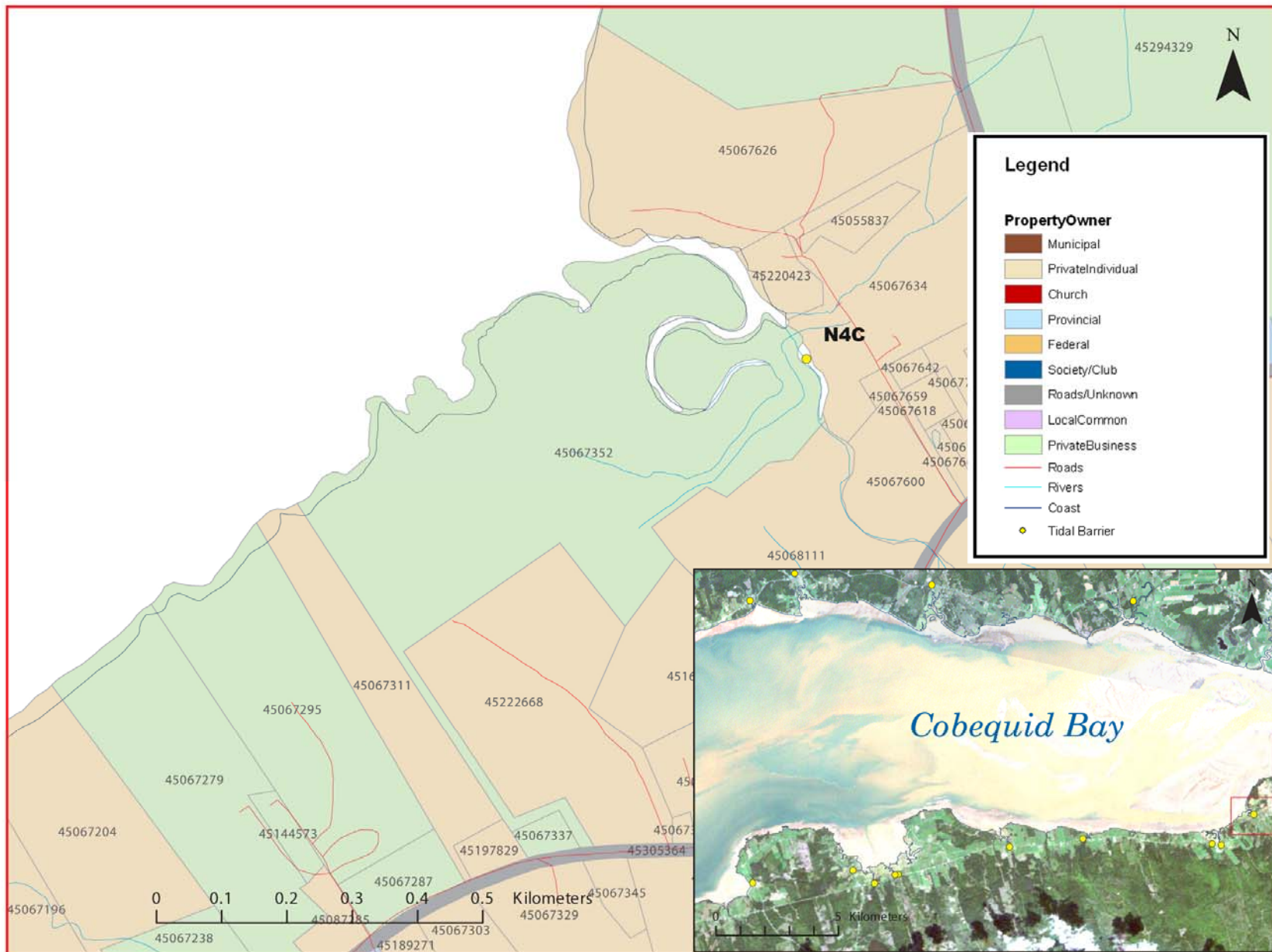


Figure 4:
Property management and tidal barrier data for Nova Scotia (Service Nova Scotia, and Municipal Relations)

Air Photo Not Available in GIS Database

Access through Land Information Services:

Photo Number: 04320-17