

Site DC5B: Wade Brook (Bear River tributary)

Date Assessed: 26/08/04

GPS Coordinates: N 44° 34' 27.42''
W 65° 38' 24.0''

Crossing Status: Partial restriction

Road Crossing: Bridge (concrete), 7m, with old dam structure (concrete), 1-2m opening

Crossing Condition: Intact

Restriction Indicators:

- Difference in stream width
- Difference in water levels
- Scour pool

Downstream of Crossing

Creek: 8m wide tributary of Bear River, scour pool.

Land: Bear River system, residential and business.

Upstream of Crossing

Creek: 7m wide tributary of Bear River, smooth straight flow.

Land: Wooded, residential and business.

Comments: The bridge spans the width of the creek and poses not restriction to tidal flow, however there is an concrete dam structure with a 1-2m wide opening that is restricting tidal flow and fish passage to the upstream. The purpose and function of this structure needs to be assessed and the possibility of removing it.

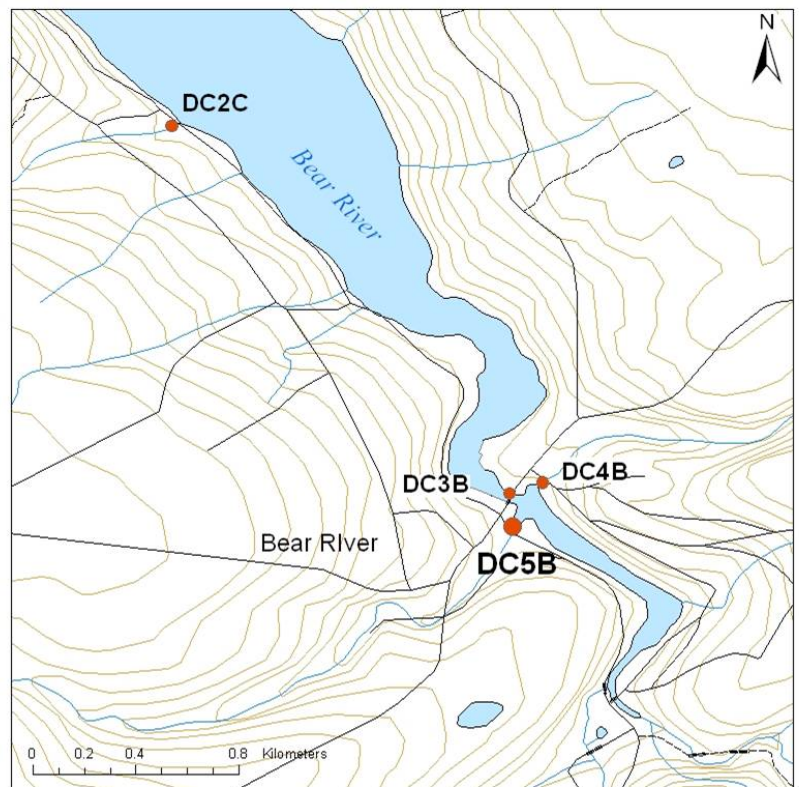




Figure 1. Downstream view of crossing



Figure 2. Dam just downstream of crossing



Figure 3. Upstream of crossing

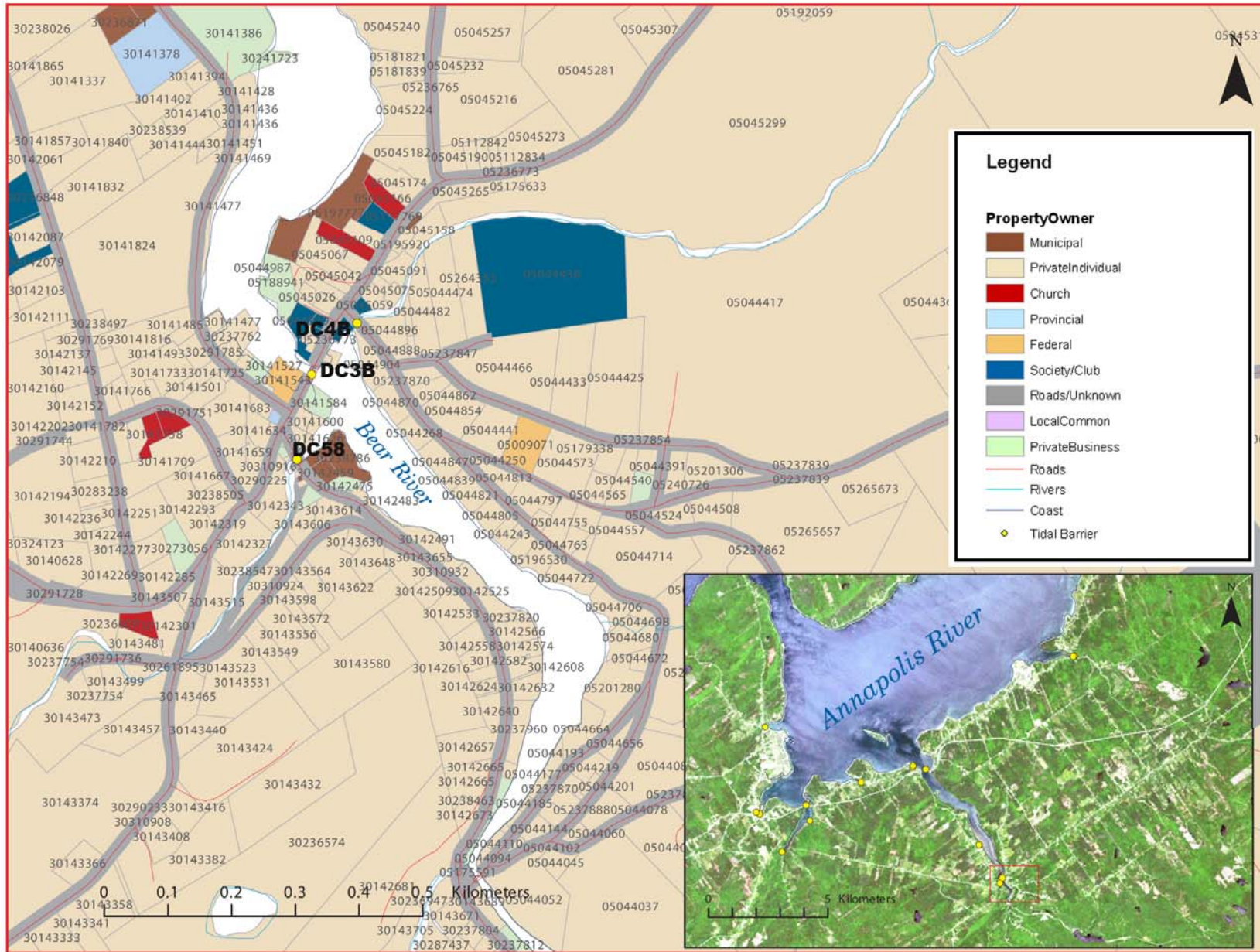


Figure 4: Property management and tidal barrier data for Nova Scotia (Service Nova Scotia, and Municipal Relations)