

**Site DC4B:** Harris Brook (Bear River tributary)

**Date Assessed:** 26/08/04

**GPS Coordinates:** N 44° 34' 34.26''  
W 65° 38' 19.86''

**Crossing Status:** No restriction

**Road Crossing:** Bridge (concrete) covered by a house, 9.5m

**Crossing Condition:** Intact

**Restriction Indicators:** None

### Downstream of Crossing

**Creek:** 8m wide tributary of Bear River, straight flow.

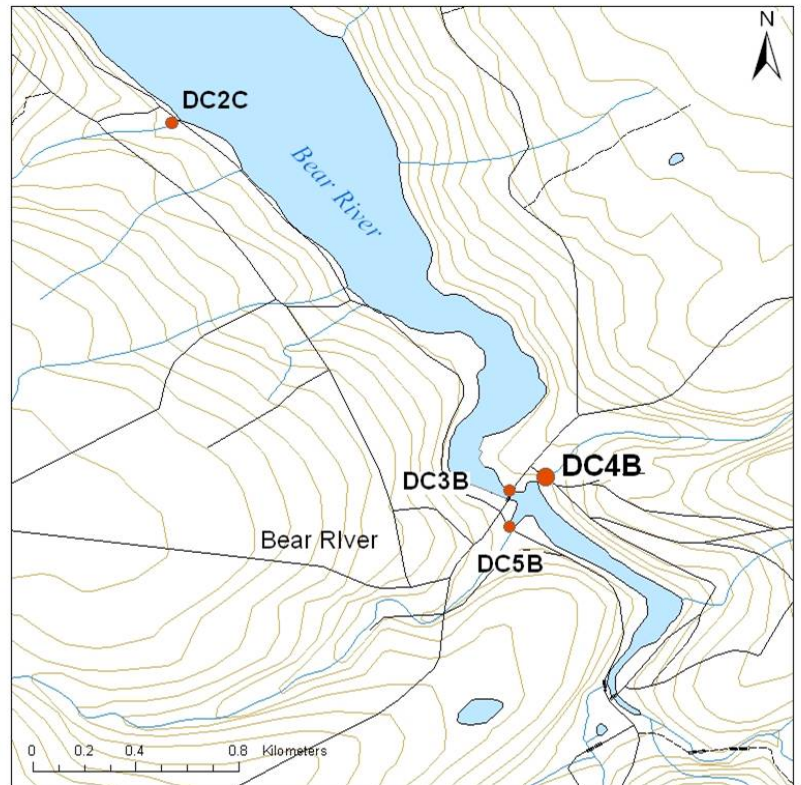
**Land:** Bear River system, business and residential.

### Upstream of Crossing

**Creek:** 8m wide tributary of Bear River, straight flow, eddies, rocky bottom.

**Land:** Wooded area, residential.

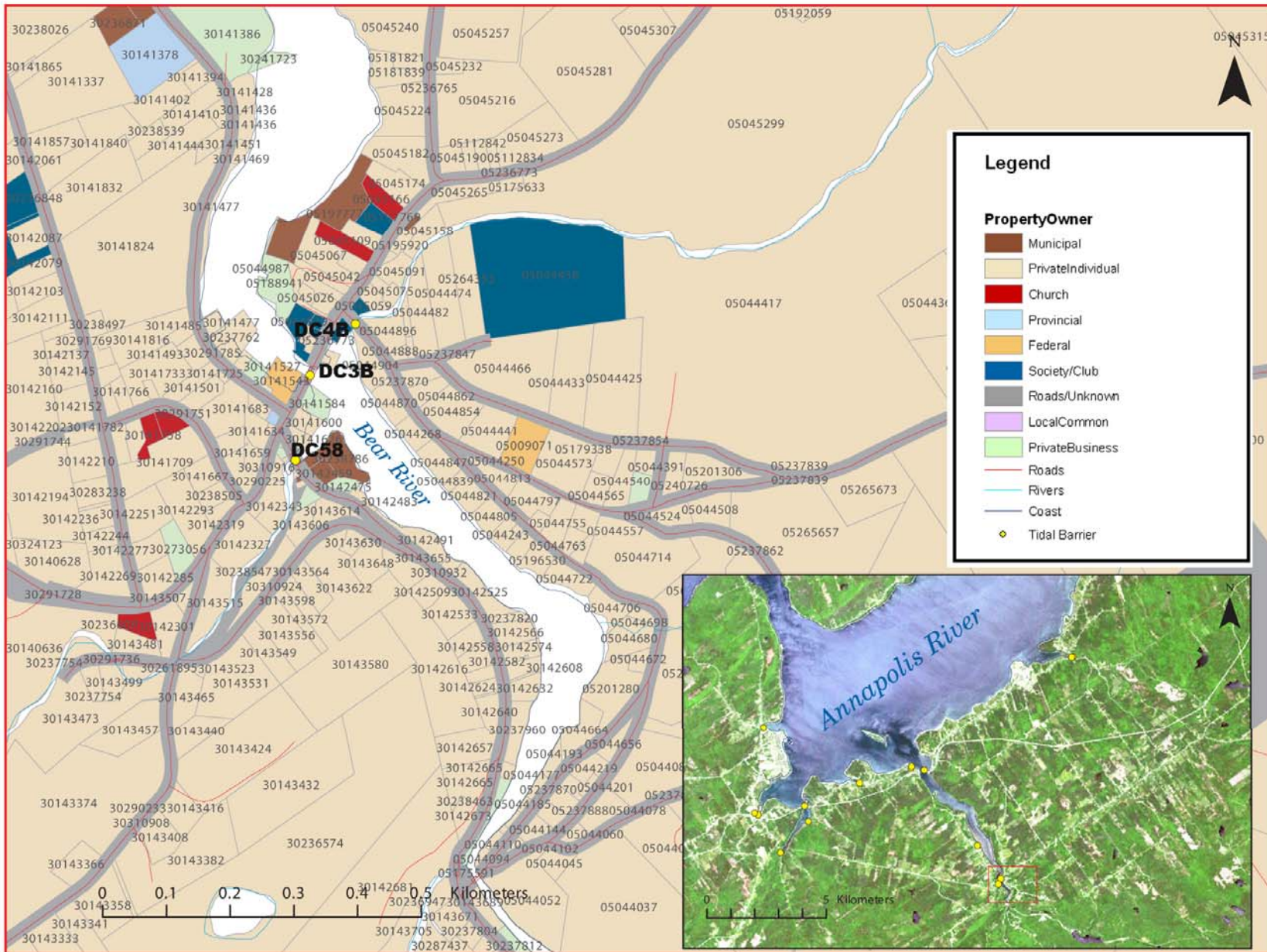
**Comments:** This crossing is essential a house on stilts acting as a bridge. The opening spans the width of the creek and poses no restriction to tidal flow or fish passage. There is a rise in elevation upstream and no salt marsh vegetation.



**Figure 1.** Upstream of crossing



**Figure 2.** Downstream view of crossing.



**Figure 3: Property management and tidal barrier data for Nova Scotia (Service Nova Scotia, and Municipal Relations)**