

Site DC48B: Salmon River

Date Assessed: 26/08/04

GPS Coordinates: N 44° 03' 18.06''
W 66° 09' 10.26''

Crossing Status: No restriction

Road Crossing: Bridge (wooden), 14.4m

Crossing Condition: Fair condition

Restriction Indicators: None

Downstream of Crossing

Creek: 18m wide, straight flow. Stream is widening due to erosion, banks are very unstable, trees bordering river are falling in.

Land: Wooded

Upstream of Crossing

Creek: Unstable banks, turbulent flow, not very tidal at this point due to elevation.

Land: Wooded

Comments: No salt marsh restoration potential, due to elevation the river is not very tidally influenced at this point. Remediation techniques have been used to improve water quality and habitat conditions in this river.

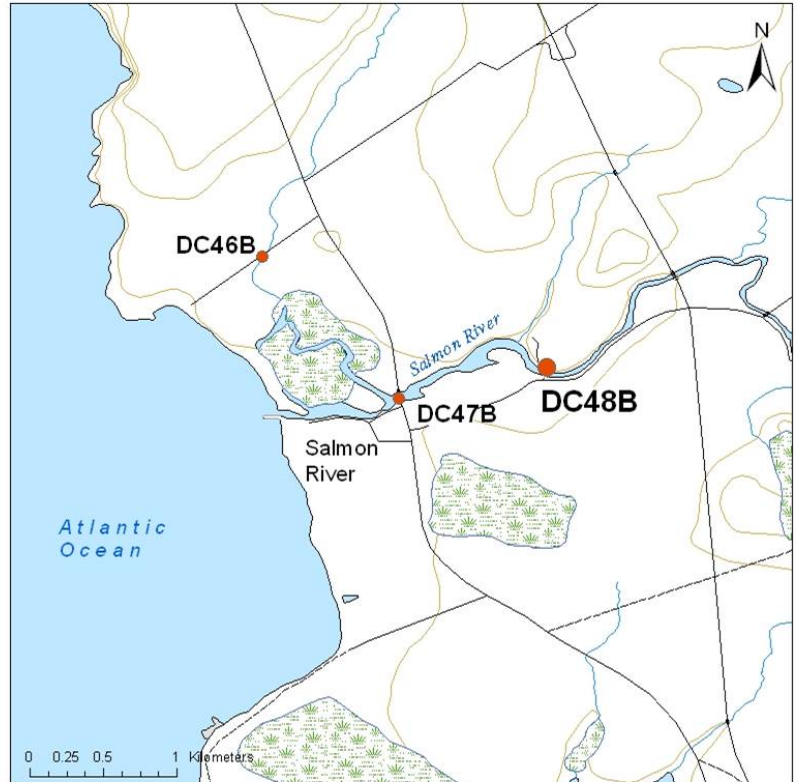




Figure 1. Downstream view of crossing



Figure 2. Downstream of crossing showing bank erosion and collapse of trees into river



Figure 3. Upstream of crossing

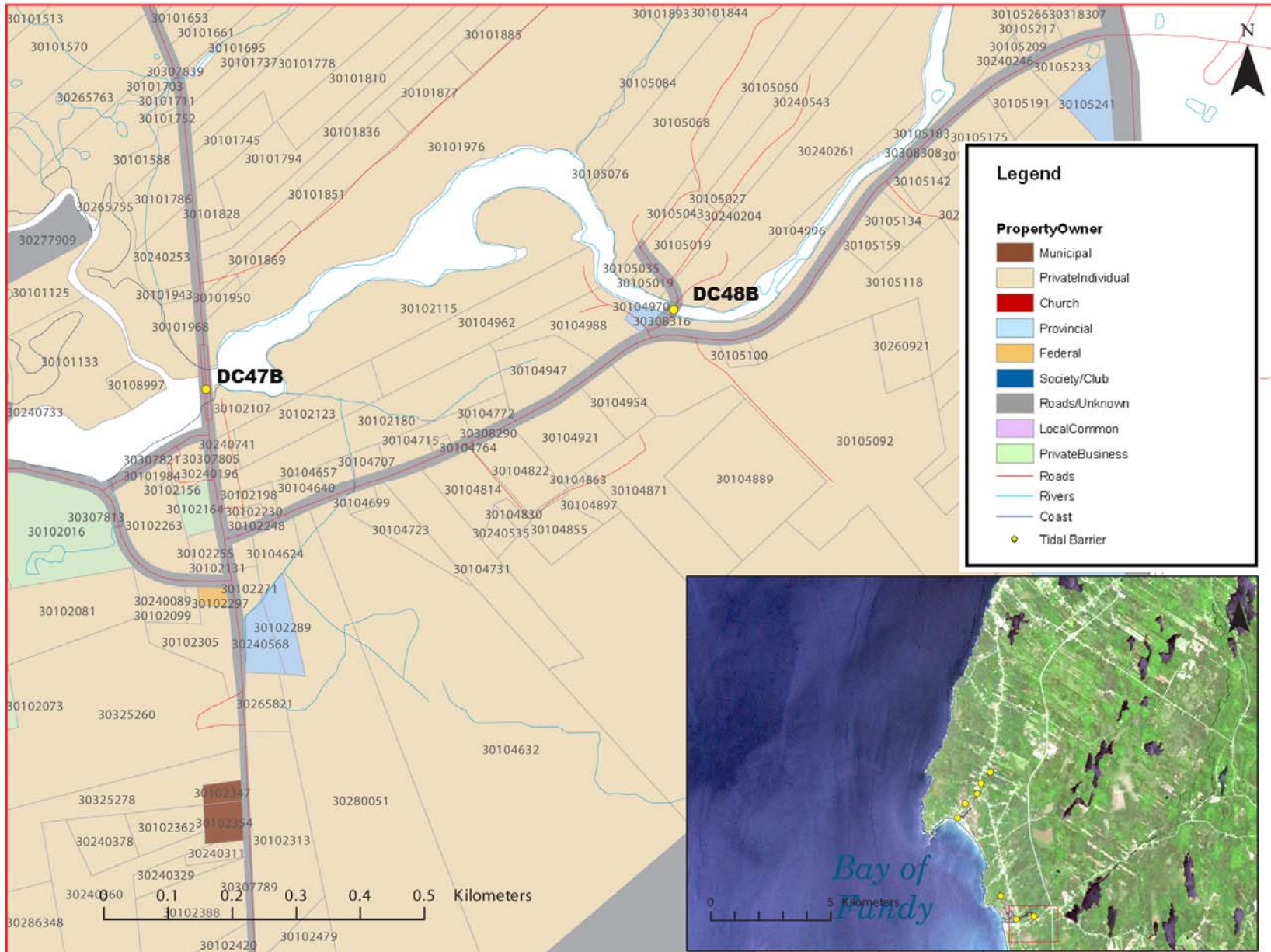


Figure 4: Property management and tidal barrier data for Nova Scotia (Service Nova Scotia, and Municipal Relations)