

**Site DC3B:** Bear River

**Date Assessed:** 26/08/04

**GPS Coordinates:** N 44° 34' 31.68''  
W 65° 38' 23.7''

**Crossing Status:** No restriction

**Road Crossing:** Bridge (concrete), 18m opening

**Crossing Condition:** Intact

**Restriction Indicators:** None

### Downstream of Crossing

**Creek:** 35m wide, smooth straight flow, scour pool.

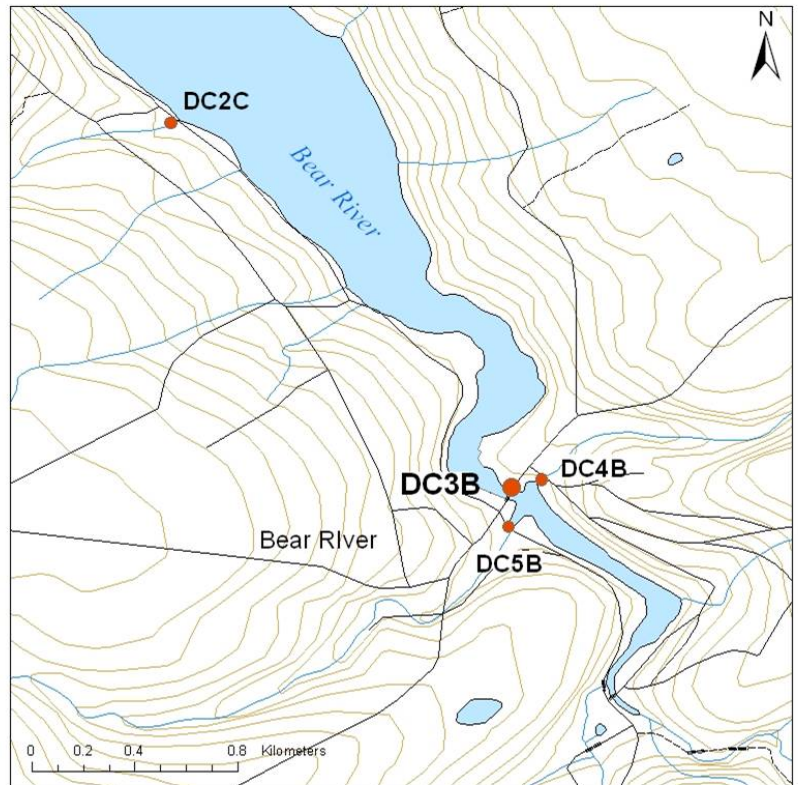
**Land:** Edge salt marsh, old wharf, residential and business.

### Upstream of Crossing

**Creek:** 35m wide, smooth straight flow, scour pool.

**Land:** Edge salt marsh, bordered by forest.

**Comments:** This bridge does not span the width of the river, however it is large enough that it does not pose as a significant restriction to tidal flow or fish passage. It does pinch the river slightly, however water level and stream width remain constant on both sides. When repair is necessary opening should at the very least be maintained.





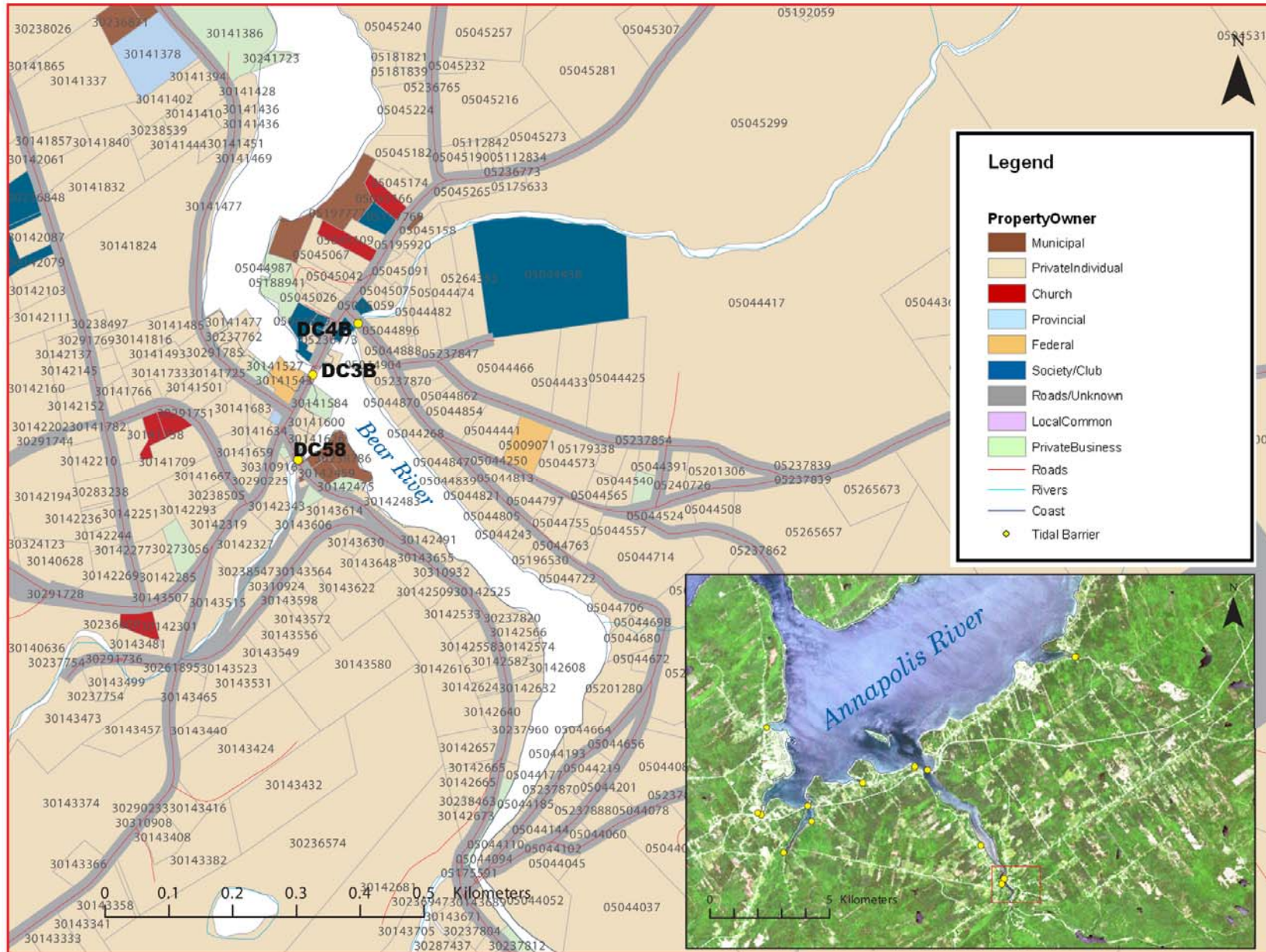
**Figure 1.** Downstream view of crossing



**Figure 2.** Downstream of crossing



**Figure 3.** Upstream of crossing



**Figure 4:** Property management and tidal barrier data for Nova Scotia (Service Nova Scotia, and Municipal Relations)