

**Site DC2C:** Chisholm Brook (Bear River tributary)

**Date Assessed:** 26/08/04

**GPS Coordinates:** N 44° 35' 18.78''  
W 65° 39' 5.16''

**Crossing Status:** Partial restriction

**Road Crossing:** Culvert (wooded/double square), 3.7m

**Crossing Condition:** Intact but showing some wear and gathering debris

**Restriction Indicators:**

- Difference in stream width
- Difference in water level
- Scour pool

**Downstream of Crossing**

**Creek:** 4m wide, straight smooth flow, tributary of Bear River.

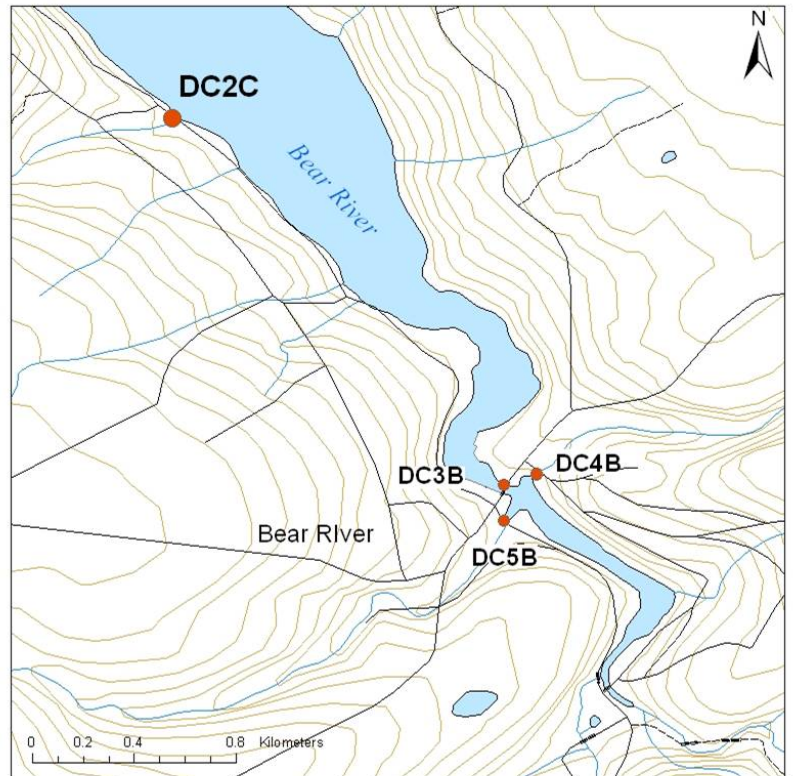
**Land:** Salt marsh, Bear River system.

**Upstream of Crossing**

**Creek:** 3m wide, scour pool.

**Land:** Small marsh bordered by forest.

**Comments:** This crossing does not have a significant impact on tidal flow, and with the rise in elevation just upstream there is not a large potential for salt marsh restoration. When culvert is to be replaced enlarging the size of opening should be considered and at the very least be maintained.





**Figure 1.** Downstream view of crossing branches from main channel of Bear River



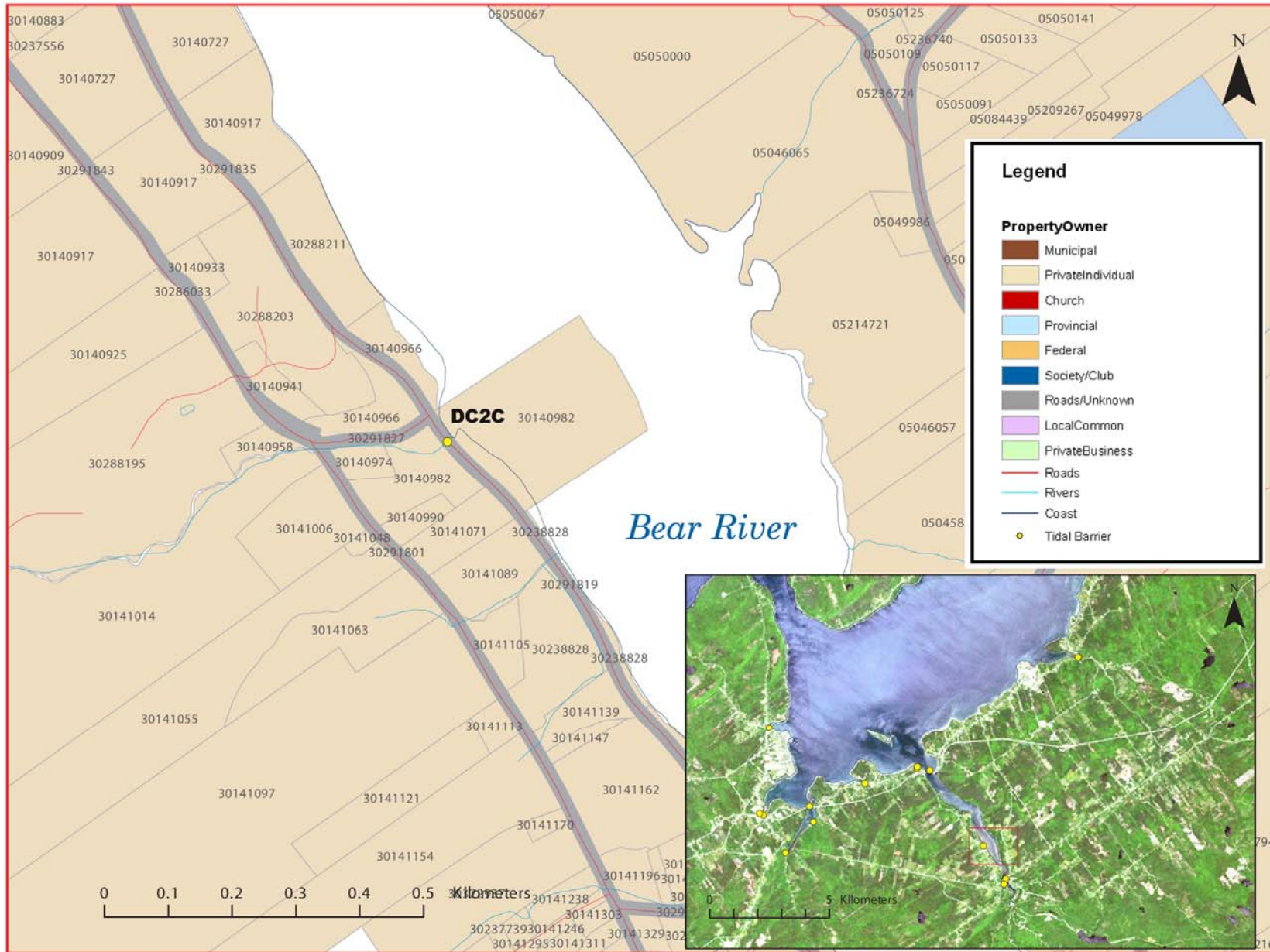
**Figure 2.** Downstream of crossing, creek



**Figure 3.** Upstream view of crossing, some debris around opening



**Figure 4.** Upstream of crossing, small marsh area that rises in elevation



**Figure5:** Property management and tidal barrier data for Nova Scotia (Service Nova Scotia, and Municipal Relations)