

Site DC17C: Long Island Brook

Date Assessed: 26/08/04

GPS Coordinates: N 44° 16' 30.24''
W 66° 19' 5.88''

Crossing Status: Partial restriction

Road Crossing: 2 Culverts (concrete), 2m each

Crossing Condition: Intact

Restriction indicators:

- Difference in stream width
- Difference in water level
- Scour pool

Downstream of Crossing

Creek: Opens into bay.

Land: Beach, some marsh grasses.

Upstream of Crossing

Creek: 15m wide with large scour pool to the right of the crossing.

Land: Residential.

Comments: Tidal flow would be improved with a single opening, possibly a bridge.

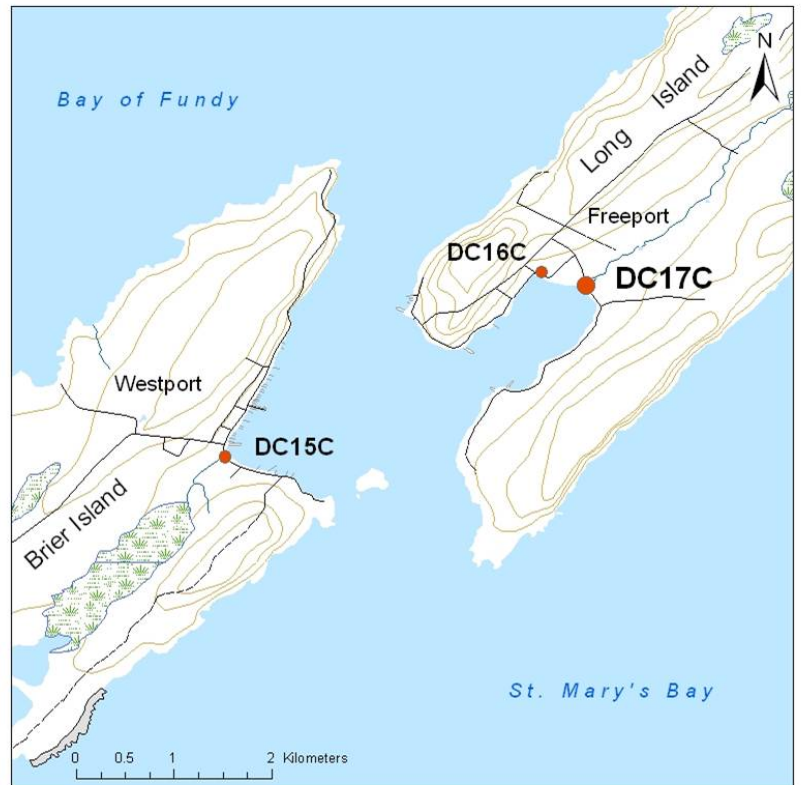




Figure 1. Upstream view of crossing



Figure 2. Upstream of crossing

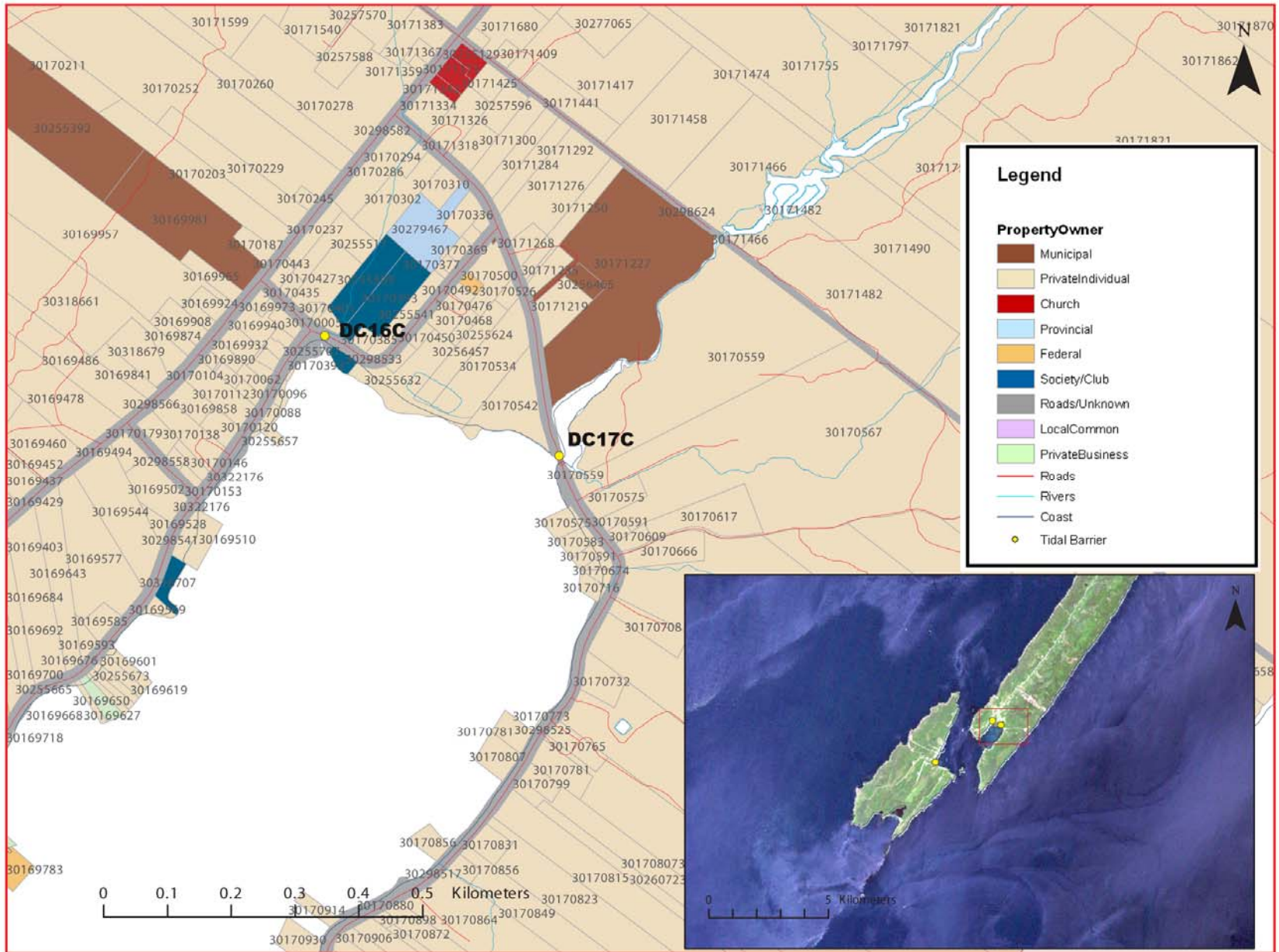


Figure 3: Property management and tidal barrier data for Nova Scotia (Service Nova Scotia, and Municipal Relations)