

Site DC16C: Freeport (School St.)

Date Assessed: 26/08/04

GPS Coordinates: N 44° 16' 35.58''
W 66° 19' 22.5''

Crossing Status: Partial restriction

Road Crossing: 2 Culverts (corrugated), 0.5m each

Crossing Condition: In poor condition and rusted

Restriction Indicators:

- Difference in stream width
- Difference in water level
- Scour pool

Downstream of Crossing

Creek: 1m wide, smooth straight flow.

Land: Salt marsh.

Upstream of Crossing

Creek: 0.5m wide, straight flow.

Land: Marsh vegetation, residential.

Comments: Replace culverts which are in need of repair, with a single larger opening to restore natural tidal flow.

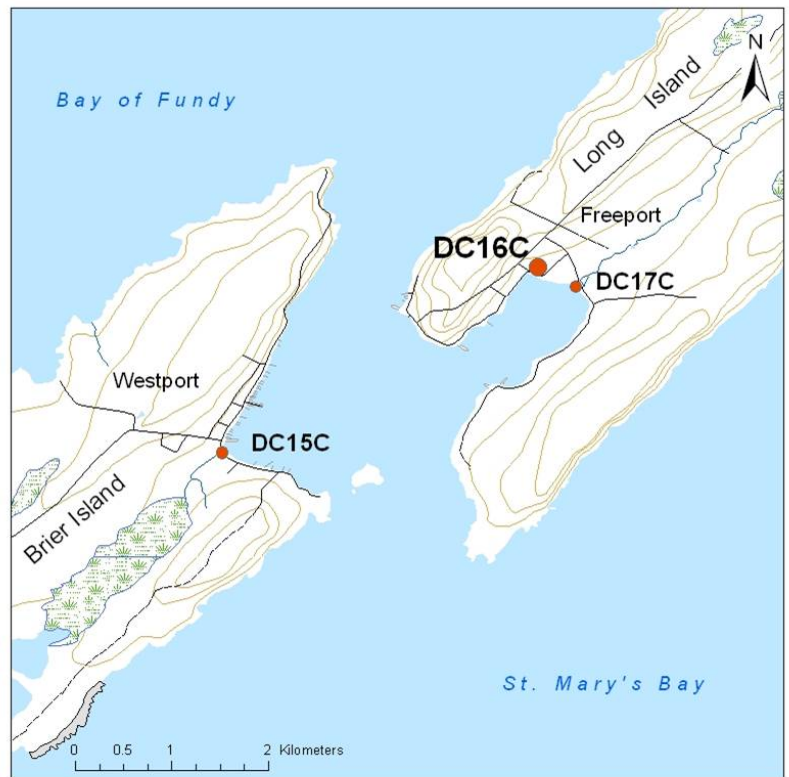




Figure 1. Downstream view of crossing. Culverts are old, rusted and collecting debris.



Figure 2. Downstream of crossing



Figure 3. Upstream of crossing

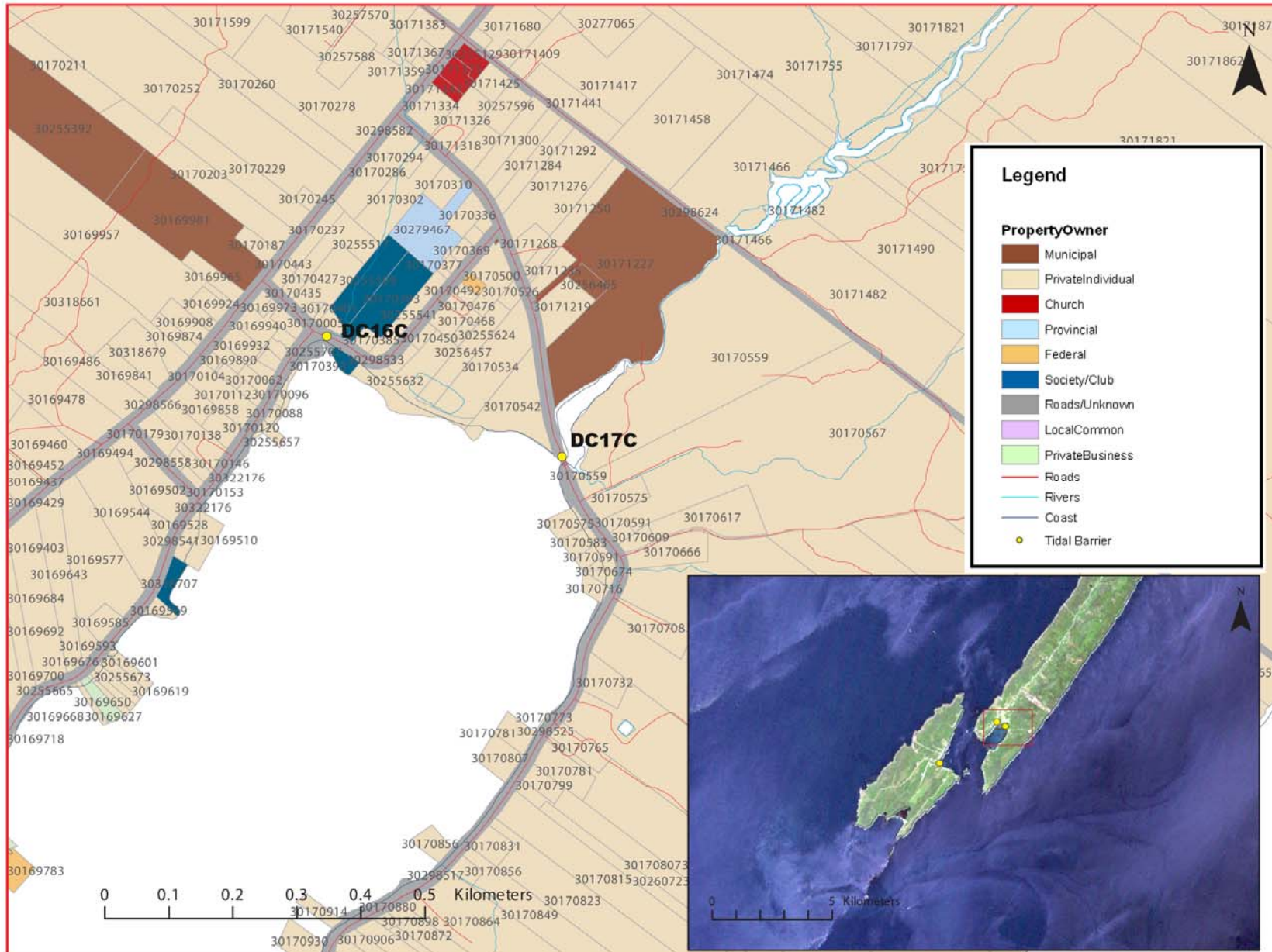


Figure 4: Property management and tidal barrier data for Nova Scotia (Service Nova Scotia, and Municipal Relations)