

Site DC14B: The Raquette (Digby)

Date Assessed: 26/08/04

GPS Coordinates: N 44° 37' 47.88''
W 65° 45' 57.24''

Crossing Status: Partial restriction

Road Crossing: Bridge (wooden), 12.5m

Crossing Condition: Intact

Restriction Indicators:

- Difference in water levels
- Bank slumping
- Difference in stream width
- Scour pool

Downstream of Crossing

Creek: 10m wide creek leading into the Annapolis Basin. Some bank slumping.

Land: Some marsh vegetation, beach.

Upstream of Crossing

Creek: 30m wide head pond.

Land: Some marsh vegetation along edges of pond. Campground further upstream.

Comments: Due to the design of this structure tidal water is being restricted through this crossing and outflow is being maintained, creating a head pond. This crossing is also restricting fish passage. Reassess its function and determine the possibility of increasing tidal flow to the system.

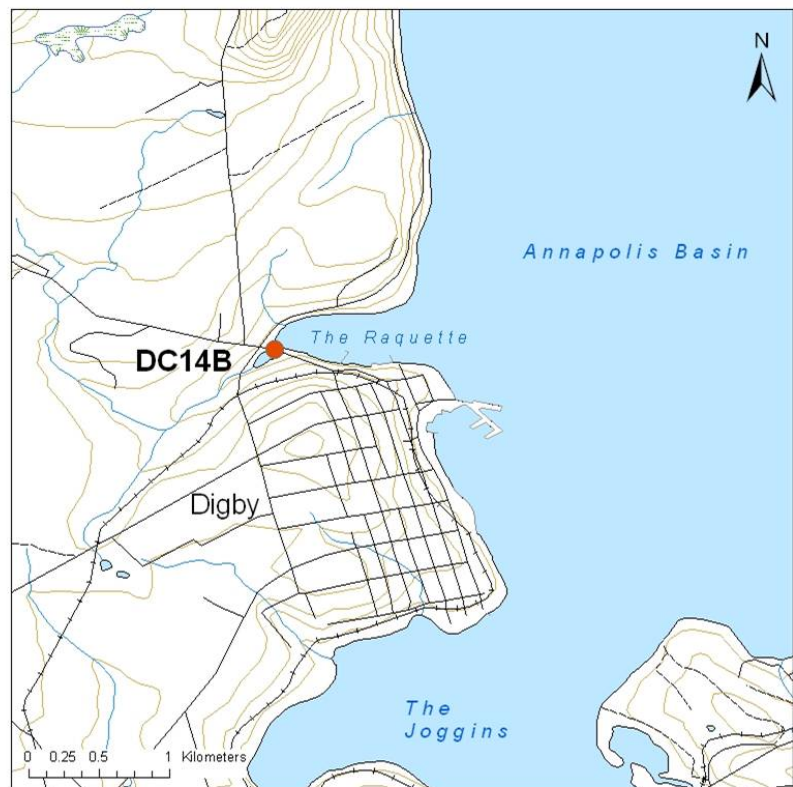




Figure 1. Downstream view of crossing



Figure 2. Upstream view of crossing



Figure 3. Upstream head pond



Figure 4. Downstream of crossing

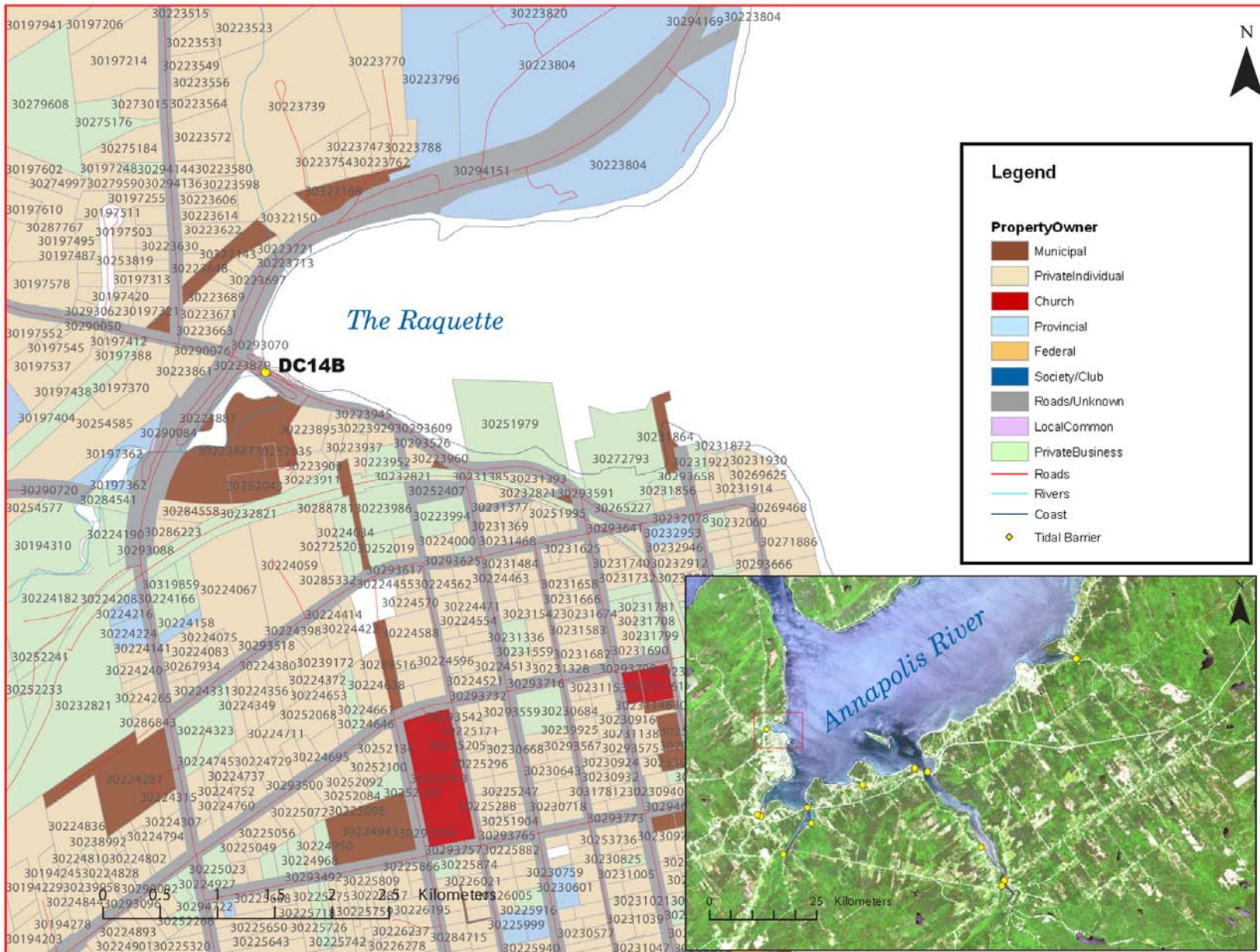


Figure 5: Property management and tidal barrier data for Nova Scotia (Service Nova Scotia, and Municipal Relations)