

Site CCMC 36A: Parrsboro Aboiteau

Date Assessed: July 8, Aug. 27-8,
Nov. 18, 2003

GPS Coordinates: N 45° 24' 04.7''
W 64° 19' 28.1''

Crossing Status: Complete restriction.

Road Crossing: A large causeway with a 21m sluice gate opening.

Crossing Condition: Original structure and design is intact.

Restriction Indicators:

- Difference in stream width
- Difference in water levels
- Difference in vegetation
- Scour pools
- Bank slumping
- Aboiteau/tide gate present
- Turbulent water flow

Downstream of Crossing

Creek: Channel is 30m wide, with substantial bank erosion and turbulent flow.

Land: The area is mainly salt marsh with no apparent buildings or use of land.

Upstream of Crossing

Creek: Head pond, approximately four times as wide as the sluice gate opening.

Land: Residential and commercial development bordering waterway.

Comments: Given the infringement of buildings along or near the banks of the channel, restoring tidal flow may not be an option. Fish passage should be addressed.



Figure 1. Downstream view of the structure.



Figure 2. Upstream of causeway and dam structure with head pond.

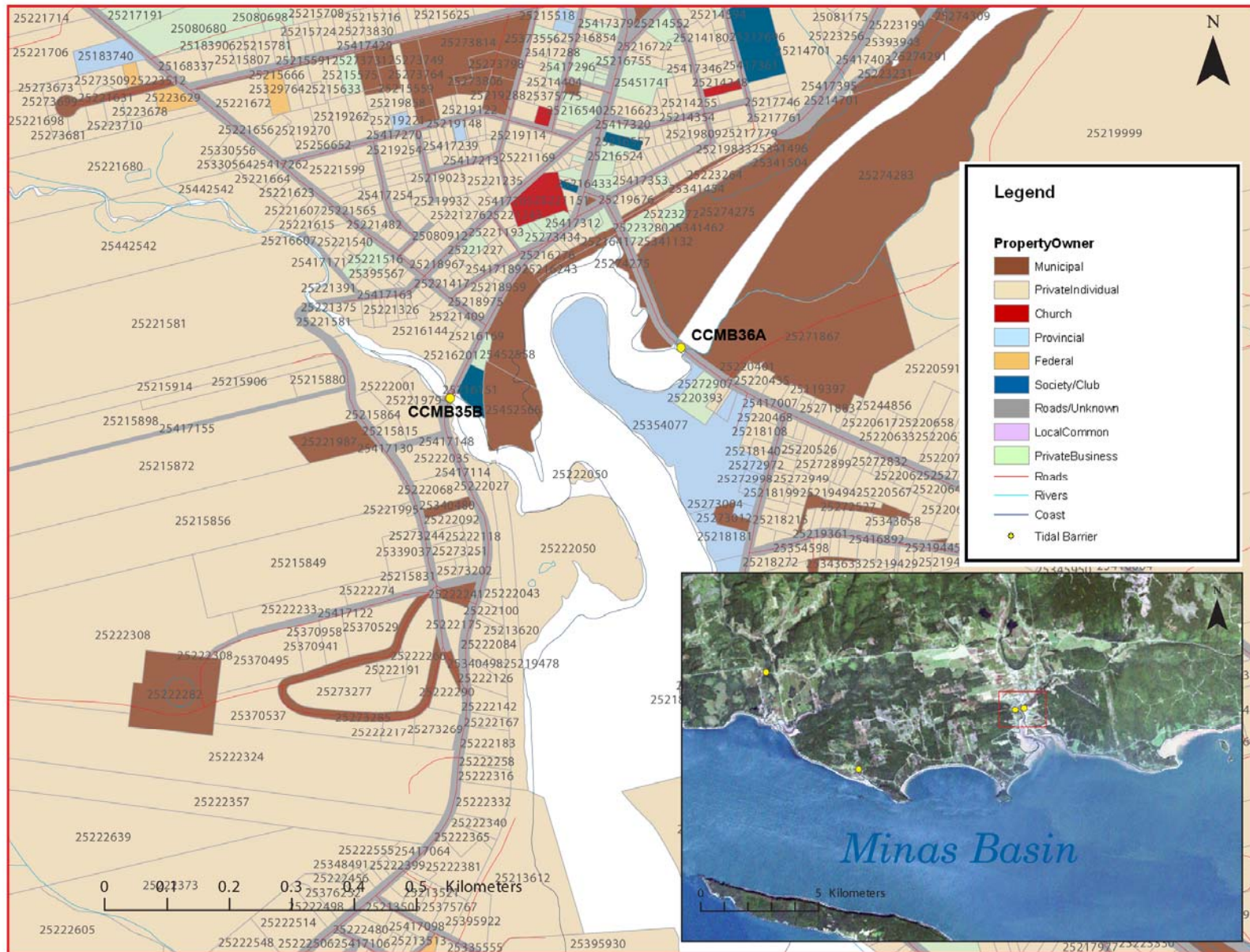


Figure 3: Property management and tidal barrier data for Nova Scotia (Service Nova Scotia, and Municipal Relations)

Air Photo Not Available in GIS Database

Access through Land Information Services:

Photo Number: 04306-306