

**Site CCMC 35B:** Farrells Brook (Parrsboro)

**Date Assessed:** July 8, Aug. 27-8,  
Nov. 18, 2003

**GPS Coordinates:** N 45° 24' 02.3''  
W 64° 19' 46.0''

**Crossing Status:** Partial restriction

**Road Crossing:** Wooden bridge built directly over old bridge with an opening of 4 to 4.5m.

**Crossing Condition:** New bridge in good repair but remnants of old bridge in considerable state of disrepair.

**Restriction Indicators:**

- Difference in stream width
- Scour pool
- Bank Slumping
- Structure failure

**Downstream of Crossing**

**Creek:** Channel is 5 to 5.5m in width with remnants of an old bridge. Smooth flow which broadens as moved downstream.

**Land:** The area is mainly salt marsh with no apparent buildings or use of land.

**Upstream of Crossing**

**Creek:** Channel is 5 to 5.5m in width confined by remnants of the old bridge and an old dam. A slight scour pool and some bank erosion are apparent.

**Land:** No immediately apparent land use except for a small number of residential houses adjacent to river.

**Comments:** Enlarge opening by removing remnants of old bridge.





Figure 1.  
Downstream view  
of the bridge with  
the old structure  
visible under  
bridge.



Figure 2.  
Upstream looking  
down under  
bridge. The old  
bridge is pinching  
the river channel.

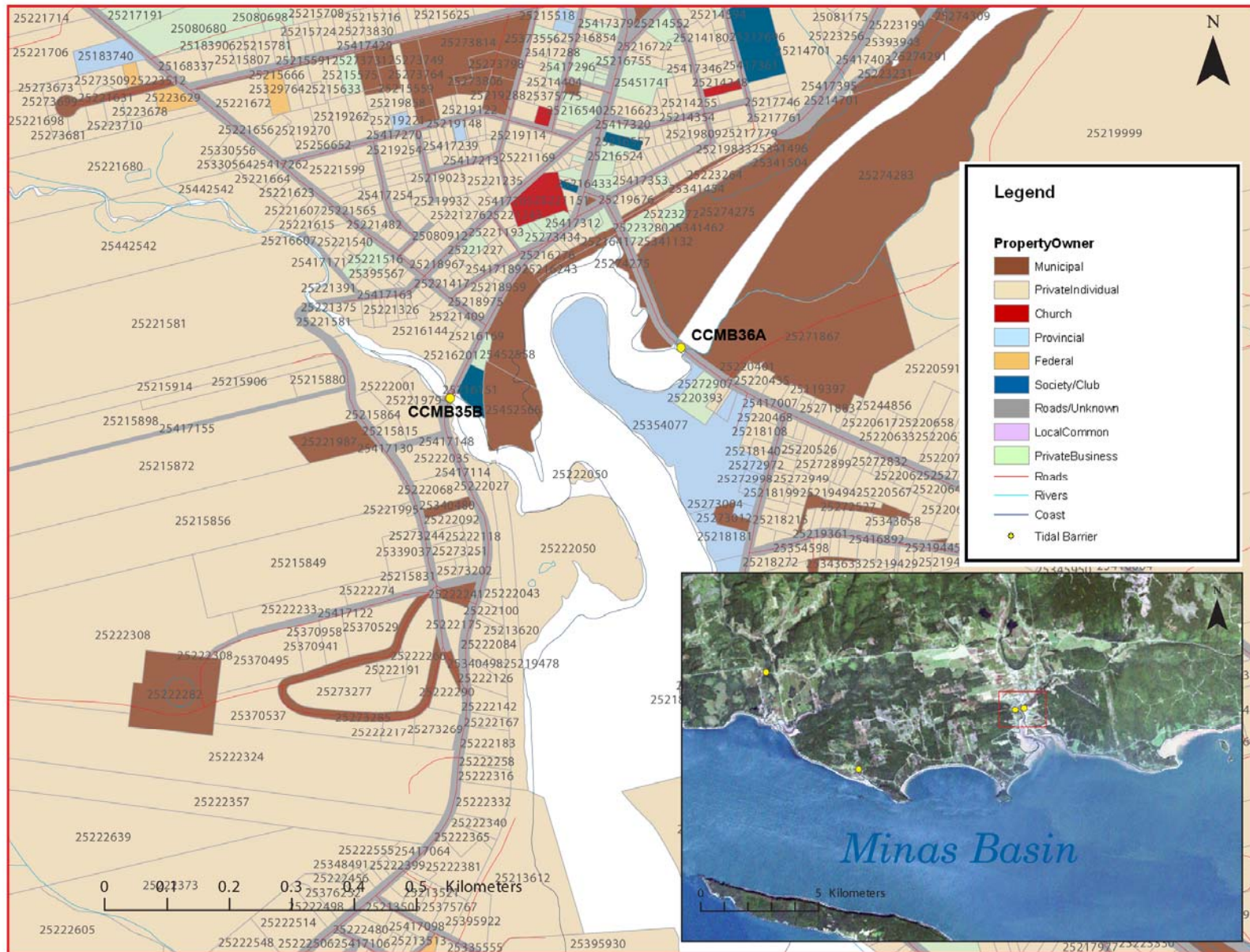


Figure 3: Property management and tidal barrier data for Nova Scotia (Service Nova Scotia, and Municipal Relations)

Air Photo Not Available in GIS Database

Access through Land Information Services:

Photo Number: 04306-306