

Site CCMC 33B: Ramshed River

Date Assessed: July 8, Aug. 27-8,
Nov. 18, 2003

GPS Coordinates: N 45° 24' 47.4''
W 64° 27' 51.4''

Crossing Status: No restriction

Road Crossing: Wooden bridge.

Crossing Condition: Structure is intact but in slight disrepair due to age.

Restriction Indicators: None

Downstream of Crossing:

Creek: Straight smooth flow

Land: Wooded area, salt marsh further downstream, does not reach road crossing.

Upstream of Crossing:

Creek: Straight smooth flow

Land: Wooded area

Comments: Maintain opening width when repaired.



Figure 1. Downstream view of the bridge



Figure 2. Upstream view from crossing, largely wooded area.

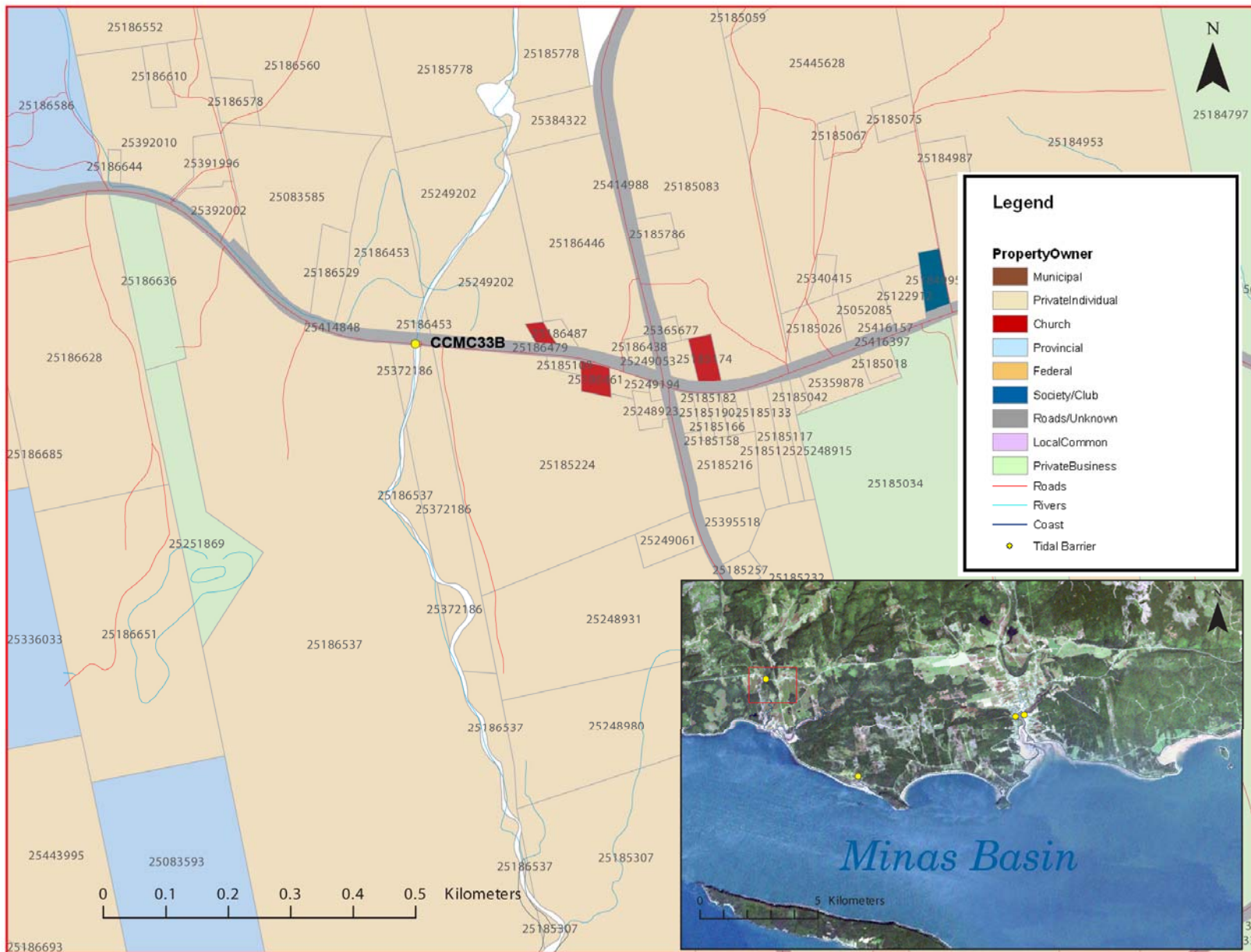


Figure 3: Property management and tidal barrier data for Nova Scotia (Service Nova Scotia, and Municipal Relations)

Air Photo Not Available in GIS Database

Access through Land Information Services:

Photo Number: 04313-42