

Site CCMC 32B: Fox River

Date Assessed: July 8, Aug. 27-8,  
Nov. 18, 2003

GPS Coordinates: N 45° 24' 58''  
W 64° 31' 34''

Crossing Status: No restriction.

Road Crossing: 8m long wooden bridge.

Crossing Condition: Structure is intact.

**Restriction Indicators:**

- Scour pool
- Bank slumping
- Slack water

**Downstream of Crossing**

**Creek:** Channel is 12.5m wide, but there does not seem to be much of a disturbance to the water flow or the banks.

**Land:** Tidal river and marsh.

**Upstream of Crossing**

**Creek:** Channel is 12m wide, little disturbance of flow or bank erosion.

**Land:** Fresh/salt Marsh.

**Comments:** Maintain or enlarge opening when time to replace.



Figure 1. Downstream of crossing. The structure is slightly pinching the creek but does not appear to be significantly adversely affecting hydrology or habitat.



Figure 2. Downstream of crossing. Creek with salt marsh on either side.

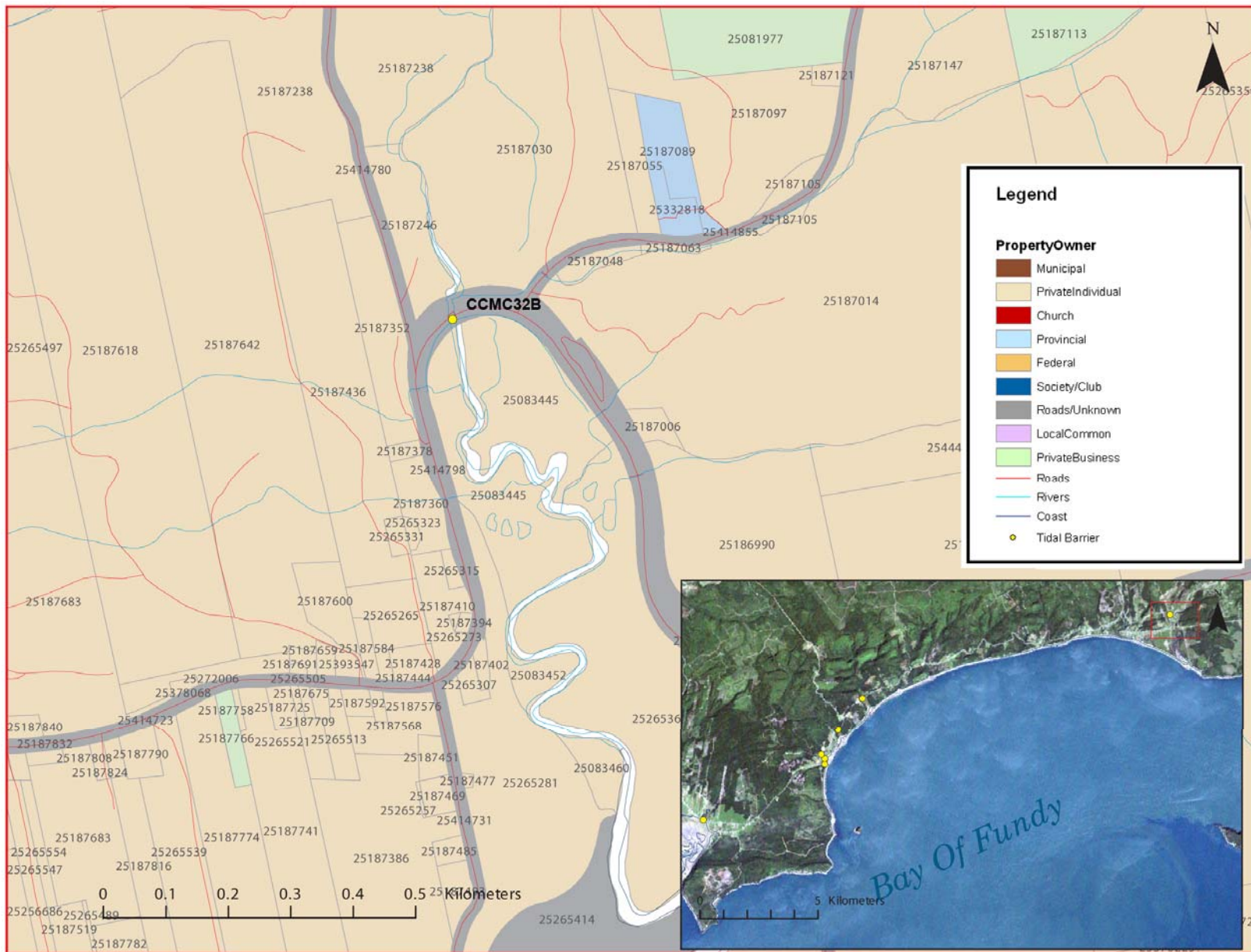


Figure 3: Property management and tidal barrier data for Nova Scotia (Service Nova Scotia, and Municipal Relations)

Air Photo Not Available in GIS Database

Access through Land Information Services:

Photo Number: 04313-37