

Site CCMC 31C: Fowler Brook

Date Assessed: July 8, Aug. 27-8,
Nov. 18, 2003

GPS Coordinates: N 45° 22' 50.0''
W 64° 41' 28.8''

Crossing Status: Partial restriction.

Road Crossing: Large wooden
culvert, 3m high / 2m wide.

Crossing Condition: In good
condition, not flush with the creek bed
(hanging culvert).

Restriction Indicators:

- Difference in water levels
- Bank slumping
- Difference in stream width
- Turbulent water flow
- Scour pool
- Hanging culvert

Downstream of Crossing

Creek: Large pool of water in front of
culvert approximately 15m wide. A
beaver dam was removed sometime near the end of the summer. Crossing near tidal extreme and likely
only experiencing larger tidal events.

Land: Undeveloped.

Upstream of Crossing

Creek: Quick rise in elevation, with beaver dams and woody debris blocking and diverting, what
seems to be, two separate channels.

Land: Underdeveloped.

Comments: Debris should be removed to get a better idea of how or where the river is moving. The
culvert should be lowered on the downstream side to be flush with the creek bed.





Figure 1.
Downstream of crossing. The large pool in front of the culvert is visible as well as the high placement of the culvert.



Figure 2. The accumulation of debris upstream of the culvert.

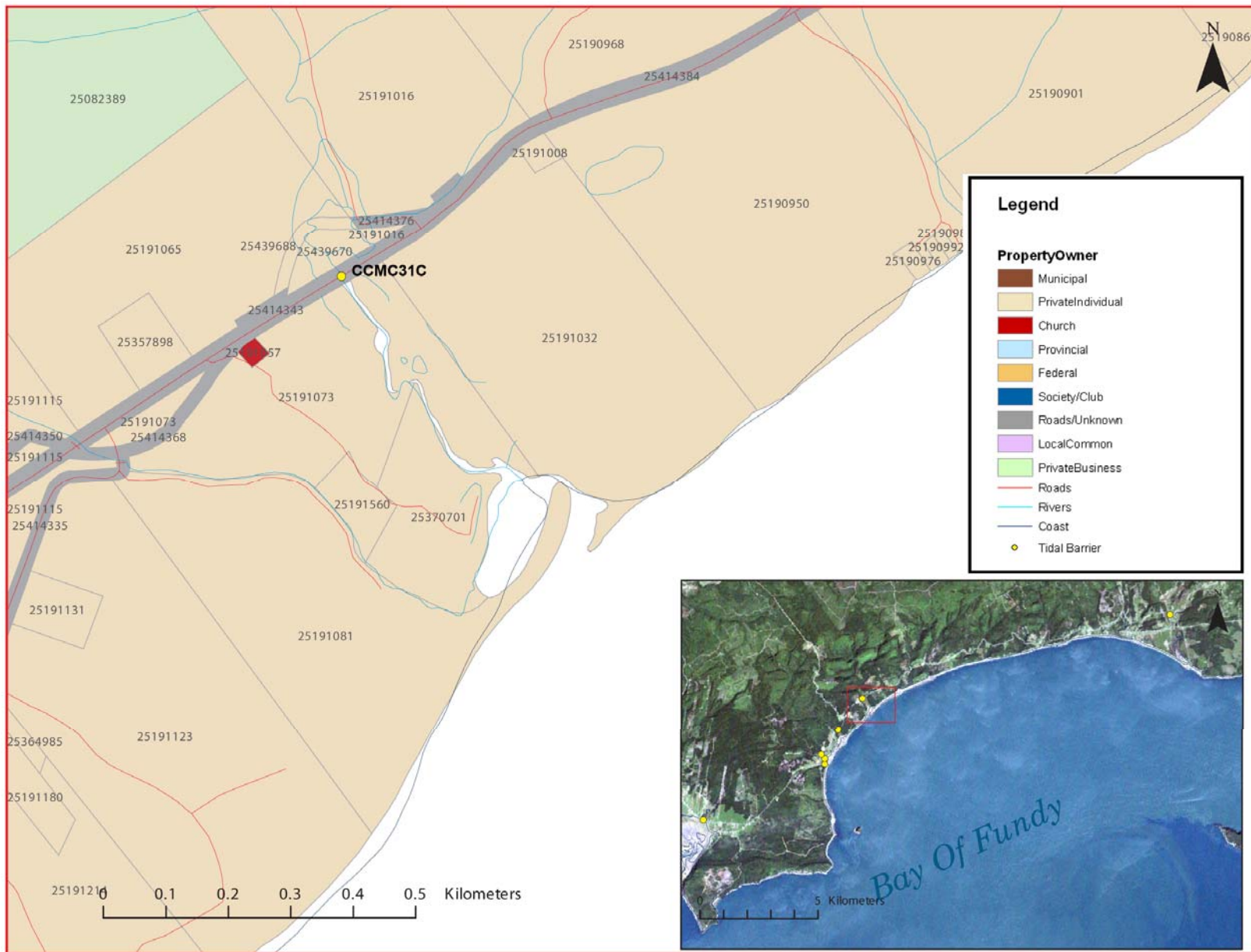


Figure 3: Property management and tidal barrier data for Nova Scotia (Service Nova Scotia, and Municipal Relations)

Air Photo Not Available in GIS Database

Access through Land Information Services:

Photo Number: 04312-90