

Site CCCB 8B: Maccan River (Hwy 242)

Date Assessed: July 8, Aug. 27-8,  
Nov. 18, 2003

GPS Coordinates: N 45° 43' 29.3''  
W 64° 15' 37.4''

Crossing Status: No restriction.

Road Crossing: 80m long concrete bridge.

Crossing Condition: Structure is intact.

Restriction Indicators: None

**Downstream of Crossing**

**River:** 65m wide river with smooth, straight flow. There are remnants of an old bridge visible.

**Land:** Dyked farmland along both sides of the river in various spots. Much of the land appeared fallow at time of assessment.

**Upstream of Crossing**

**River:** 65m wide river with smooth, straight flow. There are remnants of an old bridge.

**Land:** Dyked farmland along both sides of the river in various spots. Much of the land appeared fallow.

**Comments:** When repair or replacement is necessary, maintain the size of the opening.

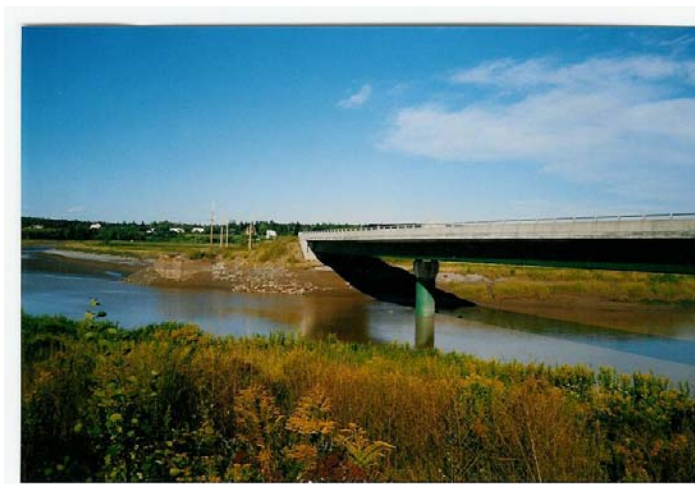
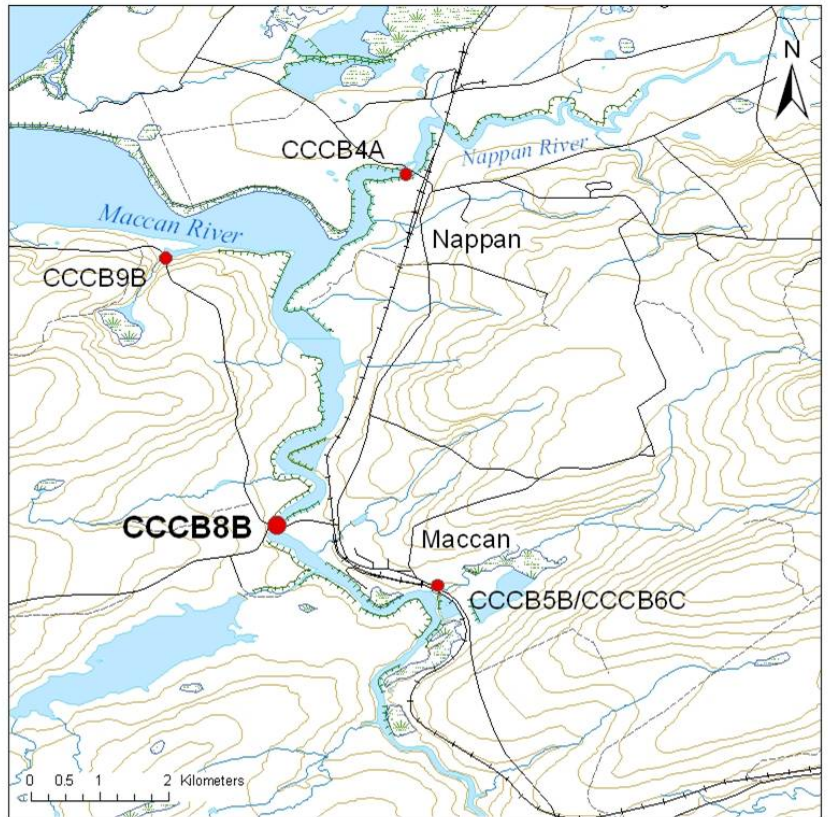


Figure 1. Very large, non restrictive bridge from downstream. Remnants from an old structure are visible on the opposite side of the river.



Figure 2. Downstream of the bridge. Remnants of the old bridge are visible. Can see some of the dyking downstream.

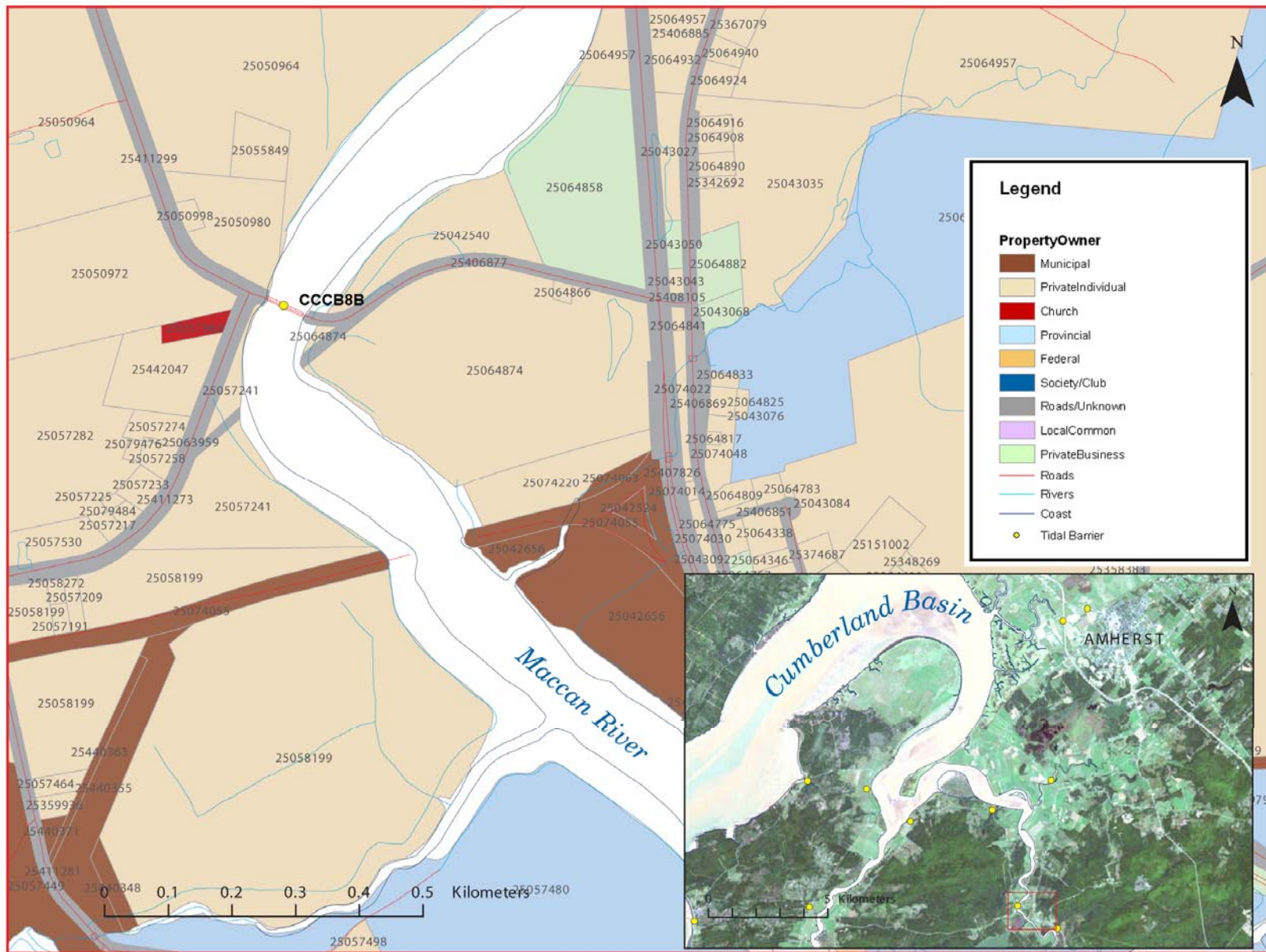


Figure 3: Property management and tidal barrier data for Nova Scotia (Service Nova Scotia, and Municipal Relations)

Air Photo Not Available in GIS Database

Access through Land Information Services:

Photo Number: 95013-70