

Site CCCB 7B: Little Forks River (Athol)

Date Assessed: July 8, Aug. 27-8,
Nov. 18, 2003

GPS Coordinates: N 45° 40' 33.1''
W 64° 12' 58.7''

Crossing Status: No restriction.

Road Crossing: 32m long steel bridge.

Crossing Condition: Structure is intact.

Restriction Indicators: None

Downstream of Crossing

Creek: 25m wide with a smooth, straight flow and salt marsh vegetation along banks.

Land: No apparent land use. Evidence of freshwater impoundment well upstream.

Upstream of Crossing

Creek: 25m wide with a smooth, straight flow and salt marsh vegetation along banks that quickly changes to fresh water vegetation.

Land: No apparent land use.

Comments: When repair or replacement is needed, maintain the size of the opening.

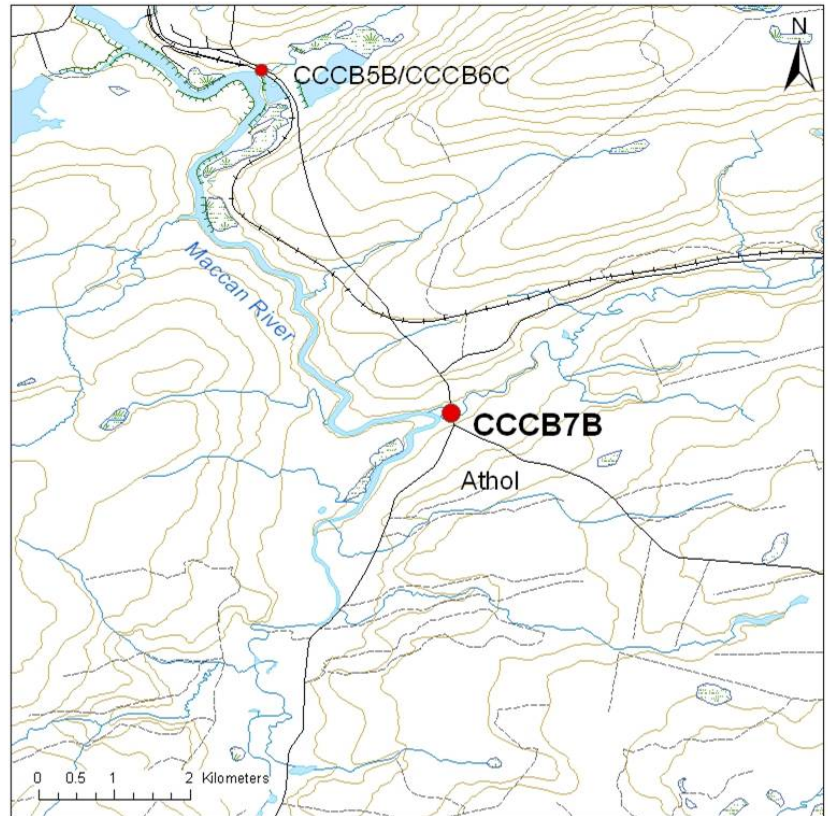


Figure 1. Non restrictive, one lane bridge. Photo taken from upstream bank.



Figure 2. Downstream of the bridge, taken from the bridge.



Figure 3. Upstream of the bridge.

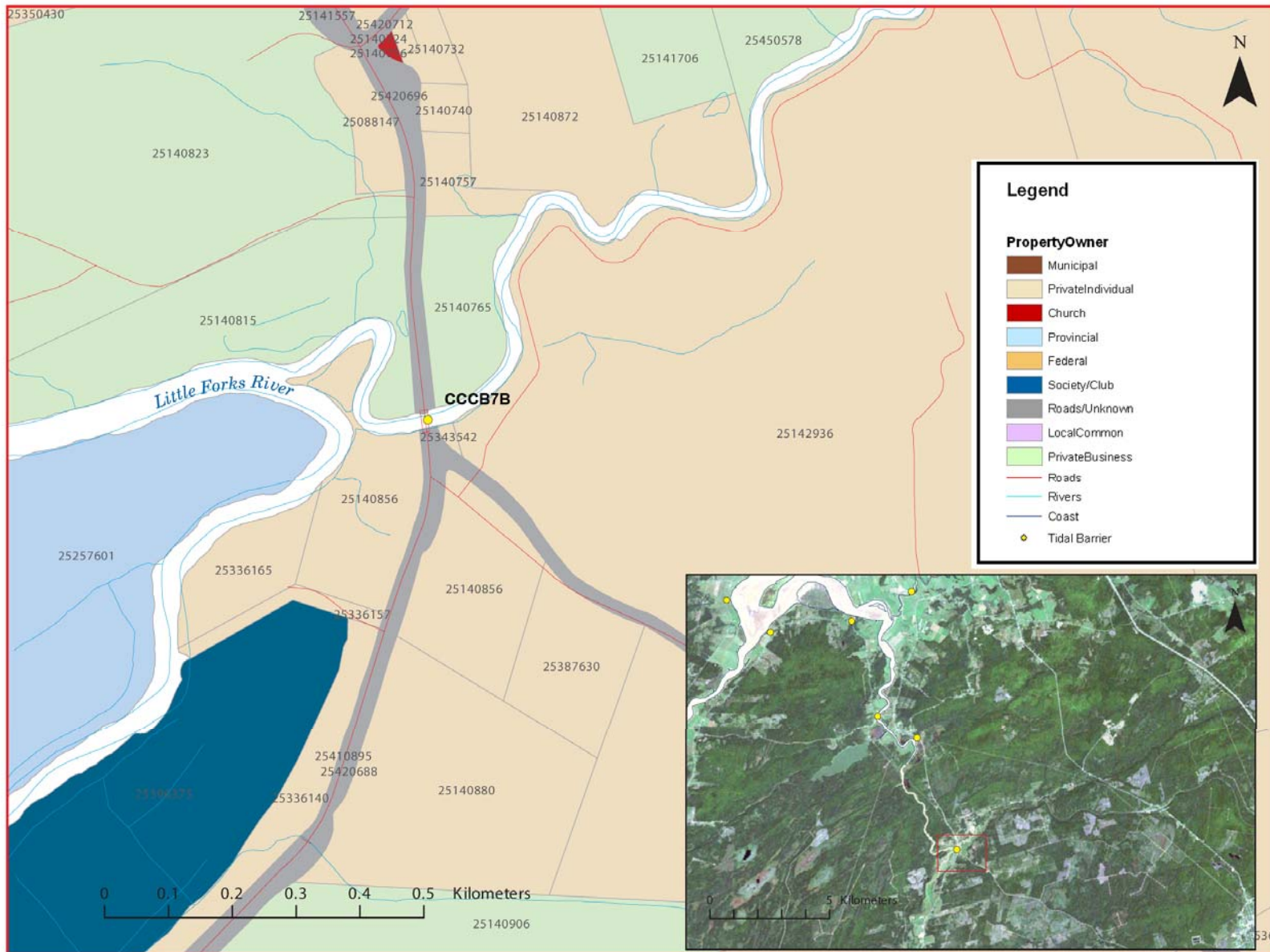


Figure 4: Property management and tidal barrier data for Nova Scotia (Service Nova Scotia, and Municipal Relations)

Air Photo Not Available in GIS Database

Access through Land Information Services:

Photo Number: 95011-160