

Site CCCB 5B: St. Georges Brook-Road (Maccan)

Date Assessed: August 25/26, 2003

GPS Coordinates: N 45° 43' 02.7''  
W 64° 14' 19.6''

Crossing Status: Partial restriction.

Road Crossing: 19m long wooden bridge.

Crossing Condition: Structure is old and in considerable disrepair. This crossing is directly influenced by downstream rail crossing (CCCB6C).

**Restriction Indicators:**

**Downstream of Crossing**

**Creek:** 15m wide, with pooling, turbulent flow and bank erosion. Turbulent flow when tide is rising, whirlpool effect when tide is receding. Rail crossing is approximately 25m downstream.

**Land:** One bank is mostly mud, other is mostly large boulders used for fill. Some cordgrass, and no apparent land use.

**Upstream of Crossing**

**Creek:** 15m wide creek with smooth flow.

**Land:** No apparent use of land. Large wetland with remnants of dead trees on marsh surface, likely from a period when area was completely restricted.

**Comments:** Maintain the size of the opening unless the rail crossing is replaced. In this case, the road crossing should be re-evaluated and enlarged.

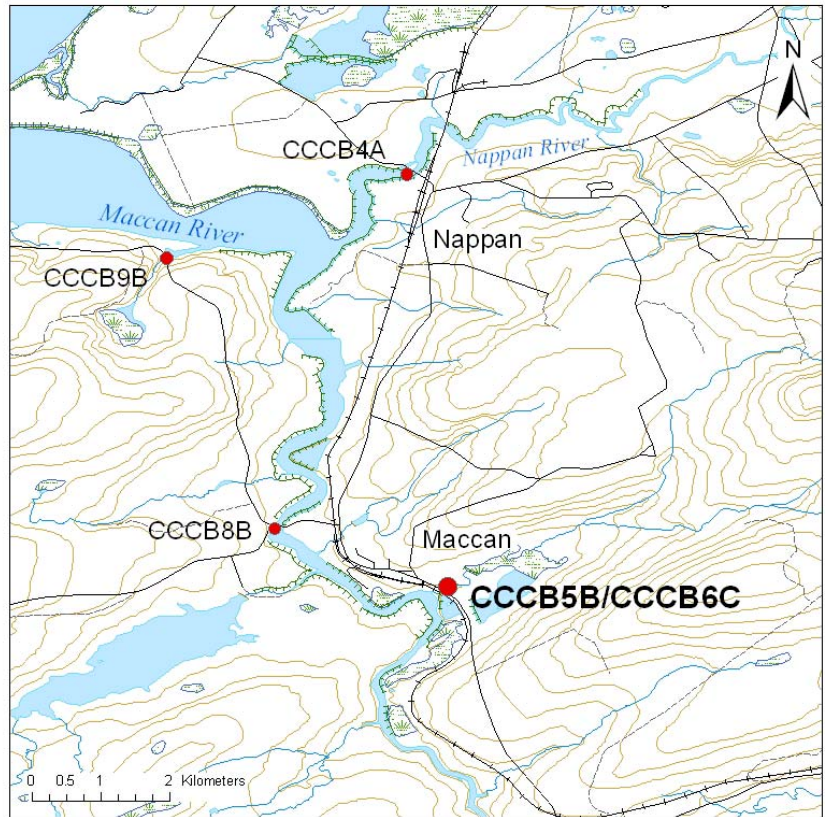


Figure 1. Bridge seen from the downstream rail road. Salt marsh vegetation is visible on either side of the creek.



Figure 2. Upstream of the crossing as seen from the bridge. Salt marsh plants line the banks, but remnants of dead trees are on the marsh surface. Large wetland area extending far to the right of this image.

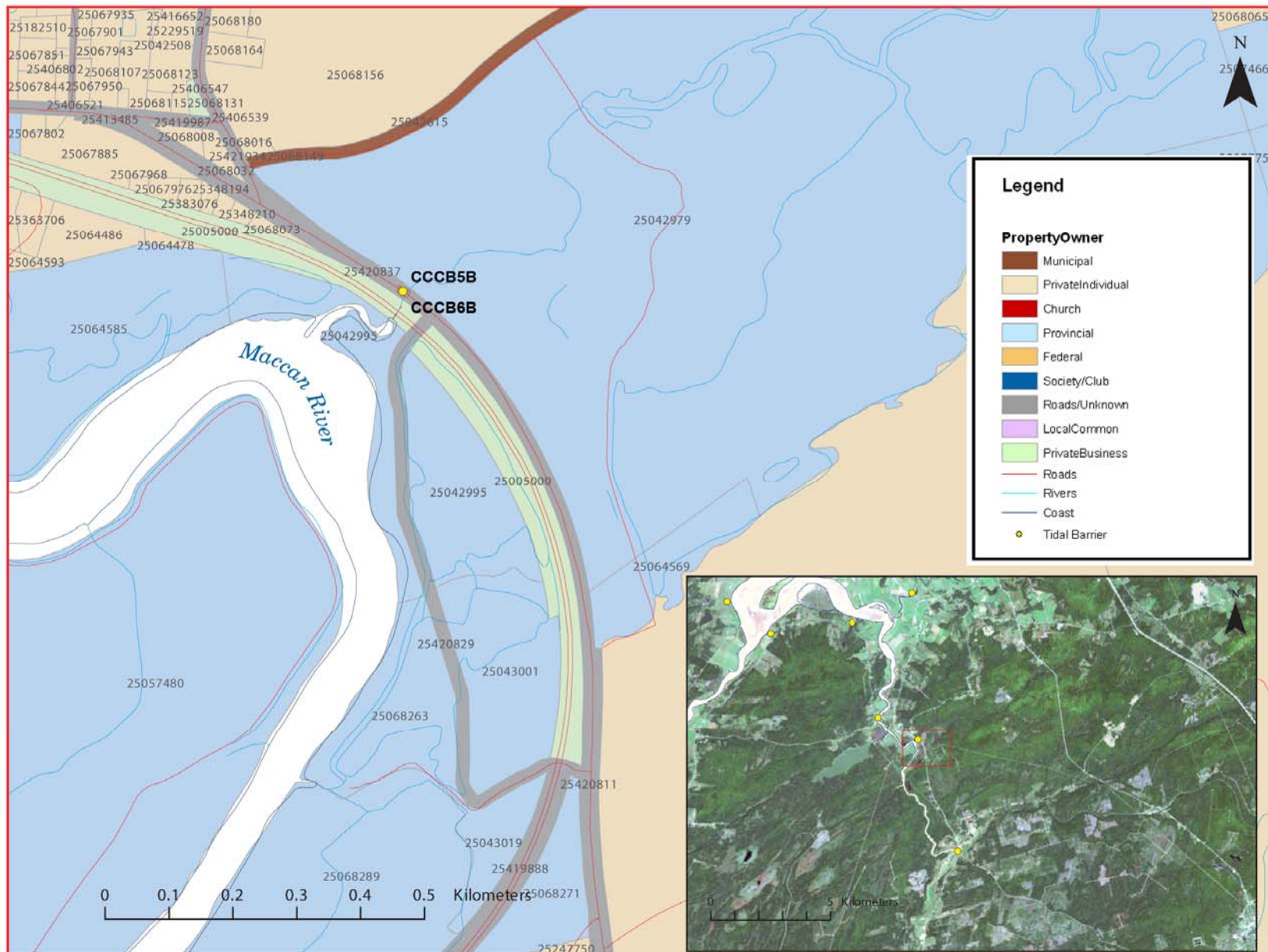


Figure 3: Property management and tidal barrier data for Nova Scotia (Service Nova Scotia, and Municipal Relations)

Air Photo Not Available in GIS Database

Access through Land Information Services:

Photo Number: 95012-118