

Site CCCB 4A: Nappan River

Date Assessed: July 8, Aug. 27-8,
Nov. 18, 2003

GPS Coordinates: N 45° 46' 21.1''
W 64° 14' 35.6''

Crossing Status: Complete restriction.

Road Crossing: 7m wide double
chambered concrete aboiteau with steel
gates.

Crossing condition: Intact

Restriction Indicators:

- Difference in water levels
- Scour pool
- Difference in stream width
- Aboiteau/tide gate
- Difference in vegetation

Downstream of Crossing

Creek: 30m wide creek with a pool at
the base of the aboiteau.

Land: Agricultural cropland, dykeland.

Upstream of Crossing

Creek: 17m wide.

Land: Farmland.

Comments: Area up and downstream continues to be actively farmed. DOAF controlled aboiteaux regulates water level upstream and dykes along river downstream protect farmland. Crossing could be assessed for impacts to fish passage. If fish are using system, how much of a barrier is the aboiteaux presenting.

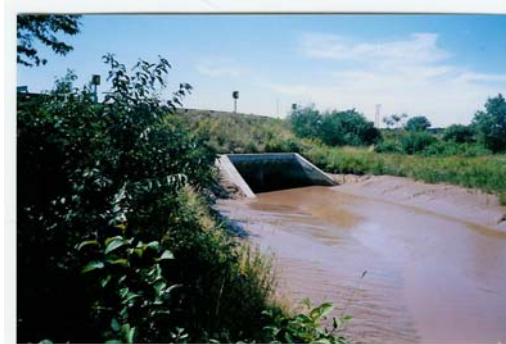


Figure 1. Upstream of crossing.



Figure 2. Downstream of crossing.

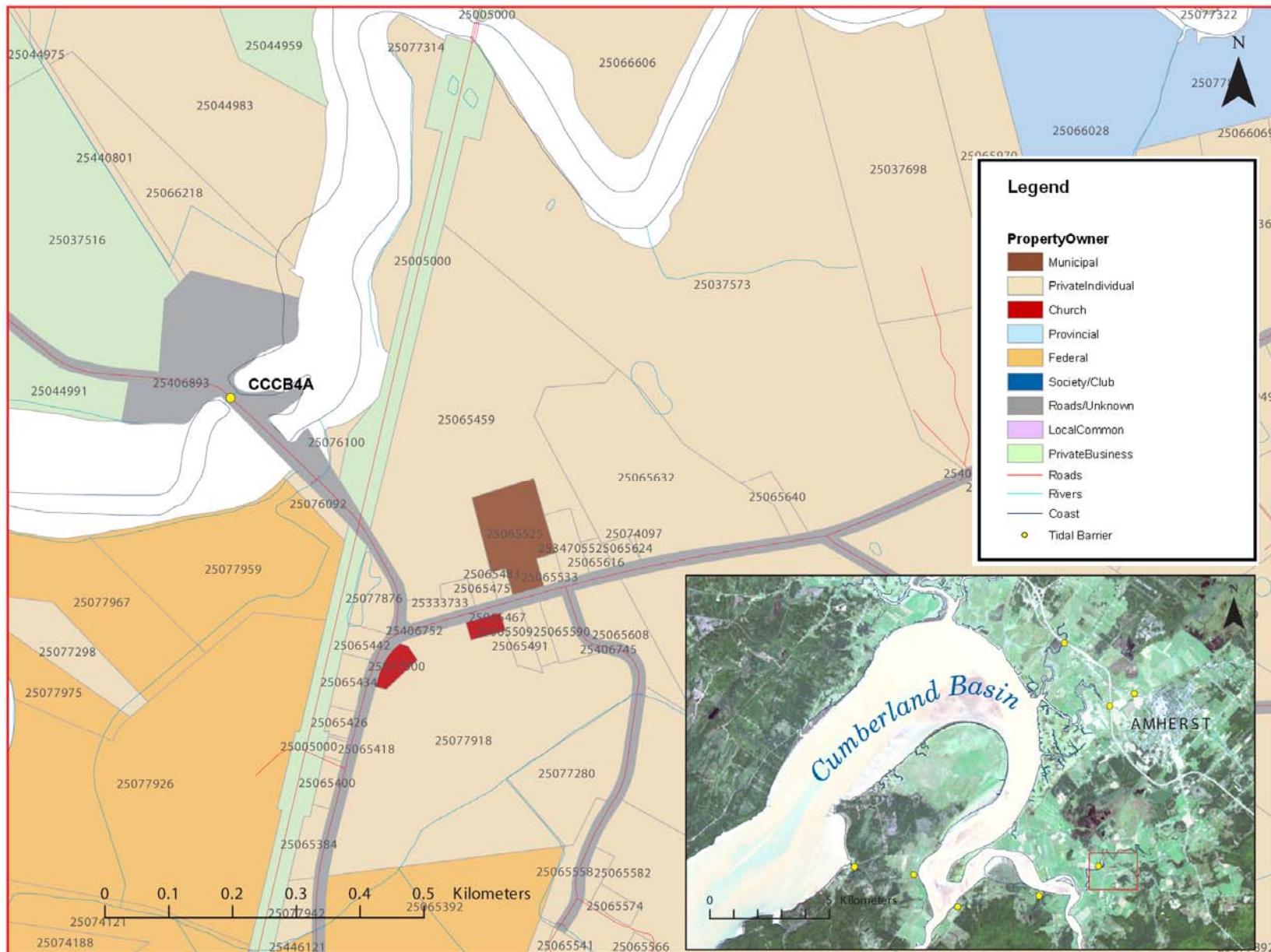


Figure 3: Property management and tidal barrier data for Nova Scotia (Service Nova Scotia, and Municipal Relations)

Air Photo Not Available in GIS Database

Access through Land Information Services:

Photo Number: 95003-13