

Site CCCB 2B: LaPlanche River (Amherst)

Date Assessed: 01/08/03

GPS Coordinates: N 45° 50' 14.9''
W 64° 13' 31.8''

Crossing Status: No longer tidal.

Road Crossing: Two bridges, 30m long wooden bridge (road), and adjacent rail bridge.

Crossing Condition: Structure is intact.

Restriction Indicators: N/A

Downstream of Crossing

Creek: 8m wide with smooth flow.
Rail bridge.

Land: Farmland.

Upstream of Crossing

Creek: 8m wide with smooth flow.

Land: Farmland.

Comments: When repair or replacement is necessary, maintain the size of the opening. If downstream obstructions are removed, a re-evaluation of the crossing should be done. Evaluate adjacent and downstream land use and address downstream restriction.

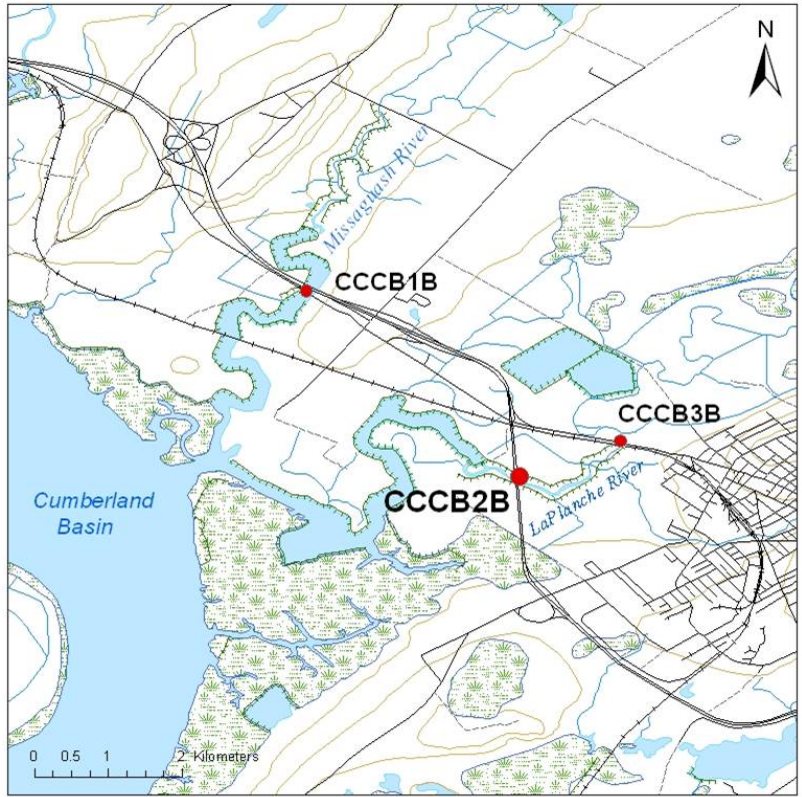


Figure 1. The rail bridge as seen from the road.



Figure 2. The road bridge.

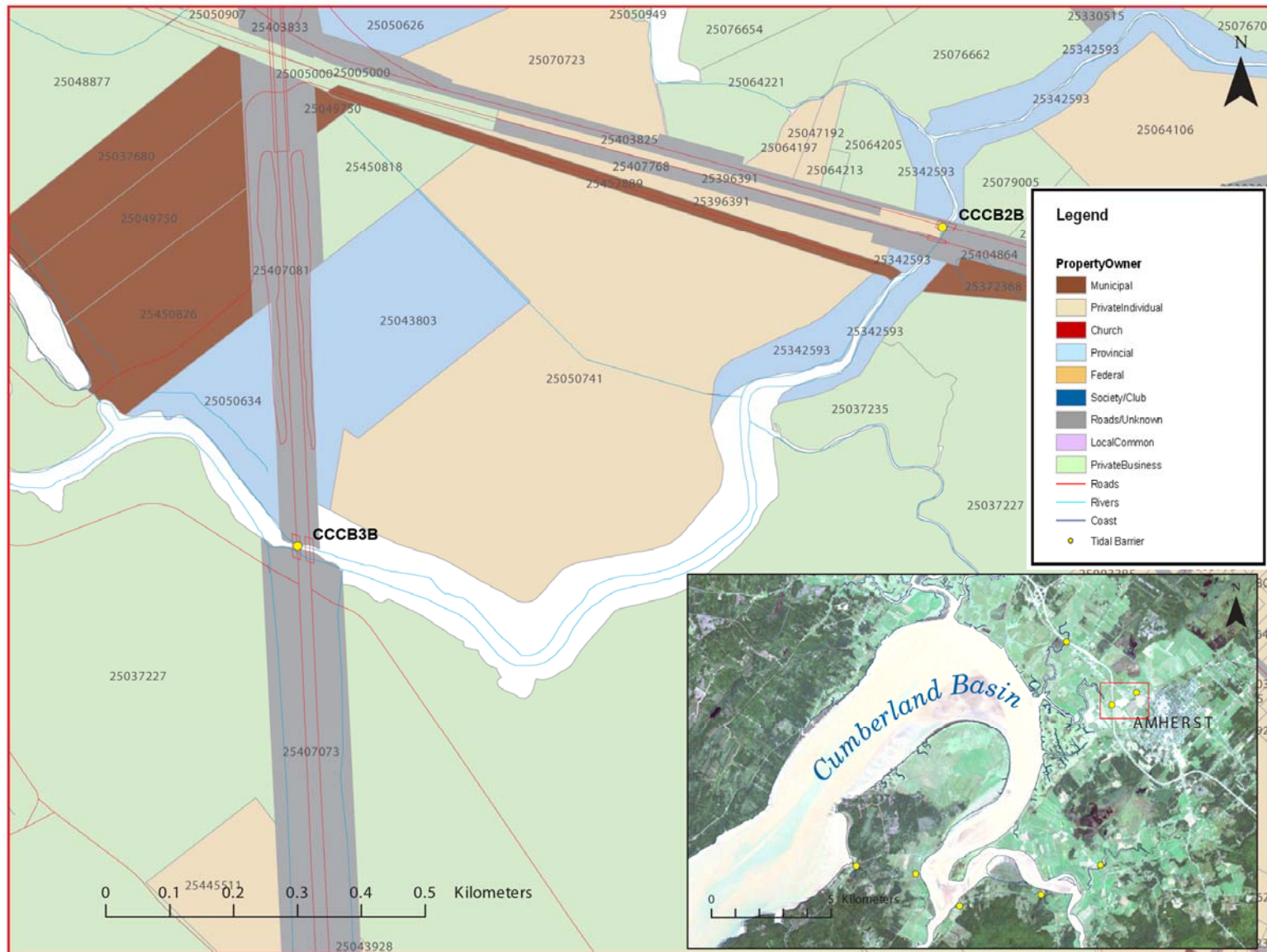


Figure 3: Property management and tidal barrier data for Nova Scotia (Service Nova Scotia, and Municipal Relations)

Air Photo Not Available in GIS Database

Access through Land Information Services:

Photo Number: 95002-141