

Site CCCB 25B: Spicer’s Cove Brook

Date Assessed: July 8, Aug. 27-8,
Nov. 18, 2003

GPS Coordinates: N 45° 25’ 59.8’’
W 64° 53’ 30.4’’

Crossing Status: Partial restriction.

Road Crossing: 30m long steel bridge.

Crossing Condition: New and intact.

Restriction Indicators:

- Difference in stream width
- Scour pool
- Bank slumping
- Turbulent water flow

Downstream of Crossing

Creek: The flow is very turbulent. The banks have been built up with boulders and supported with wooden supports, and are pinching the channel.

Land: Beach and ocean. There is erosion occurring on the beach near the channel.

Upstream of Crossing

Creek: Adequate flow is getting through, but it is being forced because the channel under the bridge is too narrow.

Land: No land use upstream, salt marsh.

Comments: Remove old crossing structure from channel under bridge to improve hydrology.



Figure 1. Upstream of the bridge. Small amount of beach to one side and the rest is salt marsh.



Figure 2. Downstream view of the bridge showing the boulders and remnant material from old crossing.



Figure 3. The bridge from the upstream beach clearly showing the pinching of the river by the bank support structures.

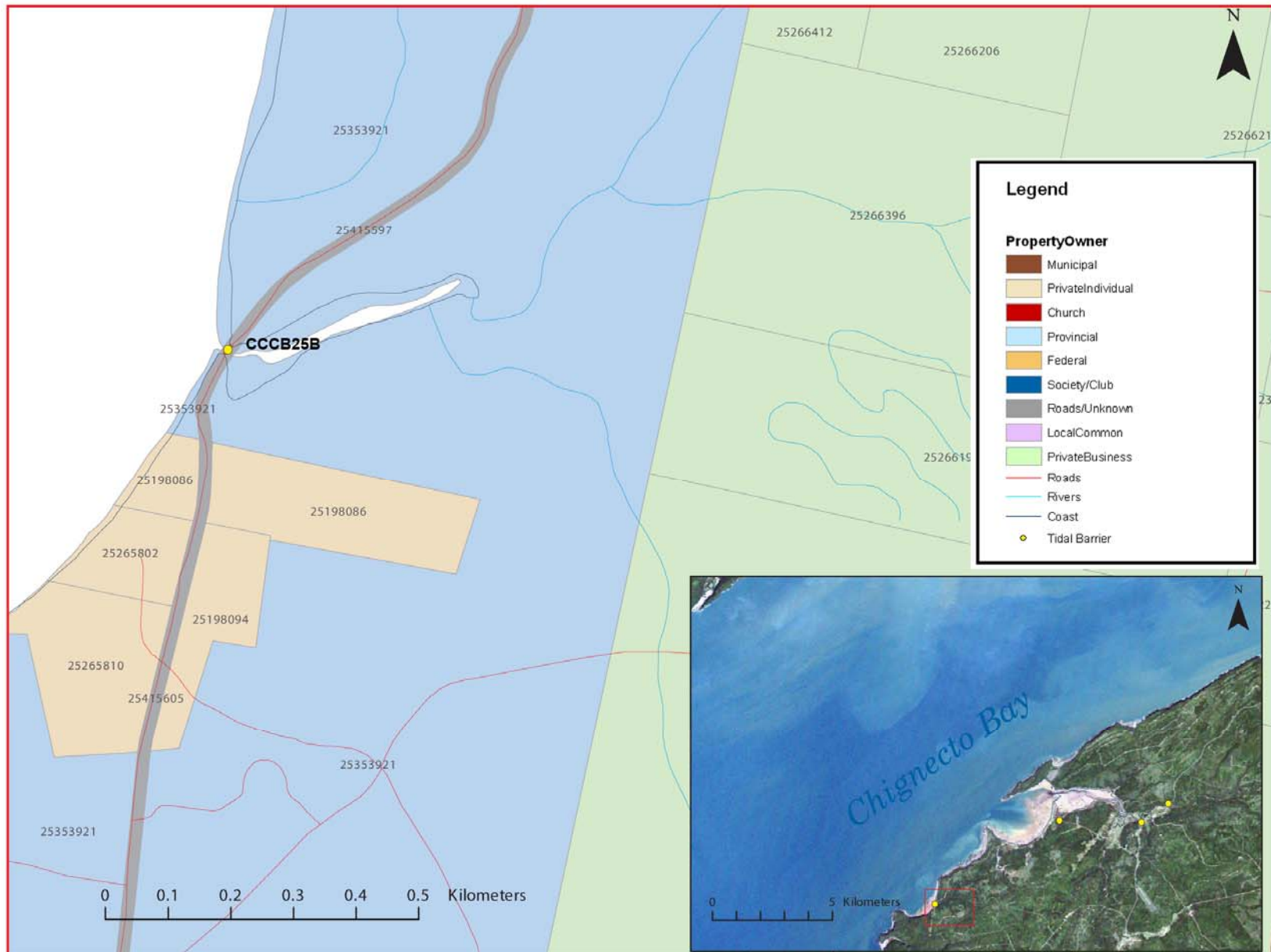


Figure 4: Property management and tidal barrier data for Nova Scotia (Service Nova Scotia, and Municipal Relations)

Air Photo Not Available in GIS Database

Access through Land Information Services:

Photo Number: 04307-4