

Site CCCB 1B: Missaguash River

Date Assessed: 01/08/03

GPS Coordinates: N 45° 51' 22.1''
W 64° 15' 47.4''

Crossing Status: No restriction.

Road Crossing: Two adjacent 40m long concrete bridges (divided highway)

Crossing Condition: Structure is intact.

Restriction Indicators: None

Downstream of Crossing

Creek: 35m wide with smooth, straight flow.

Land: Dykes along river on both sides allowing 10-20m of fringe salt marsh on either side of the river.

Upstream of Crossing

Creek: 35m wide with smooth, straight flow.

Land: Dykes along river on both sides allowing 10-20m of fringe salt marsh on either side of the river.

Comments: When repair or replacement is necessary, maintain the size of the opening. Evaluate agriculture use of dykelands and potential breach of dykes, remove in areas not being utilized.

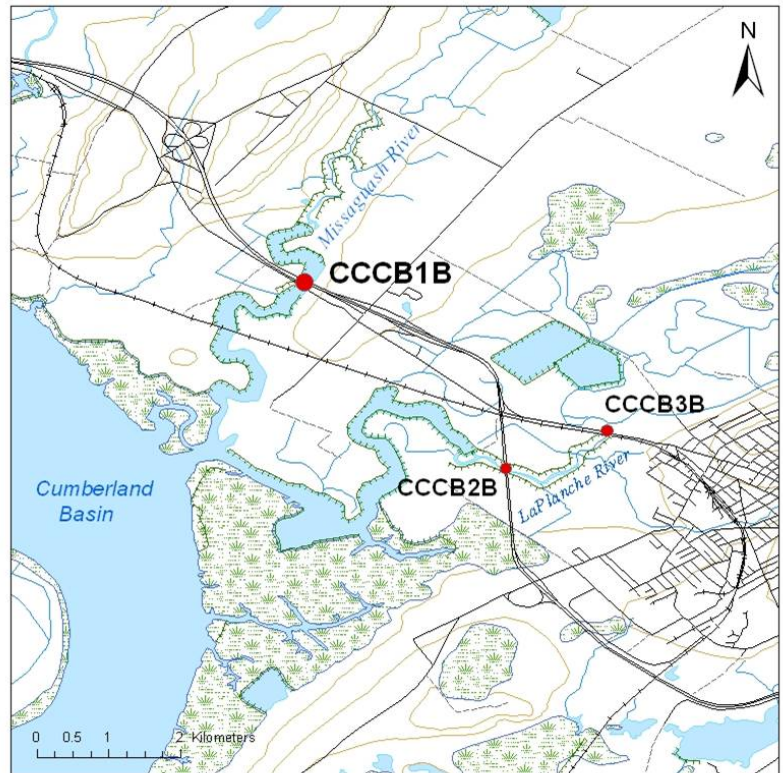


Figure 1. The bridge from a downstream bank.



Figure 2. Downstream of the bridge.

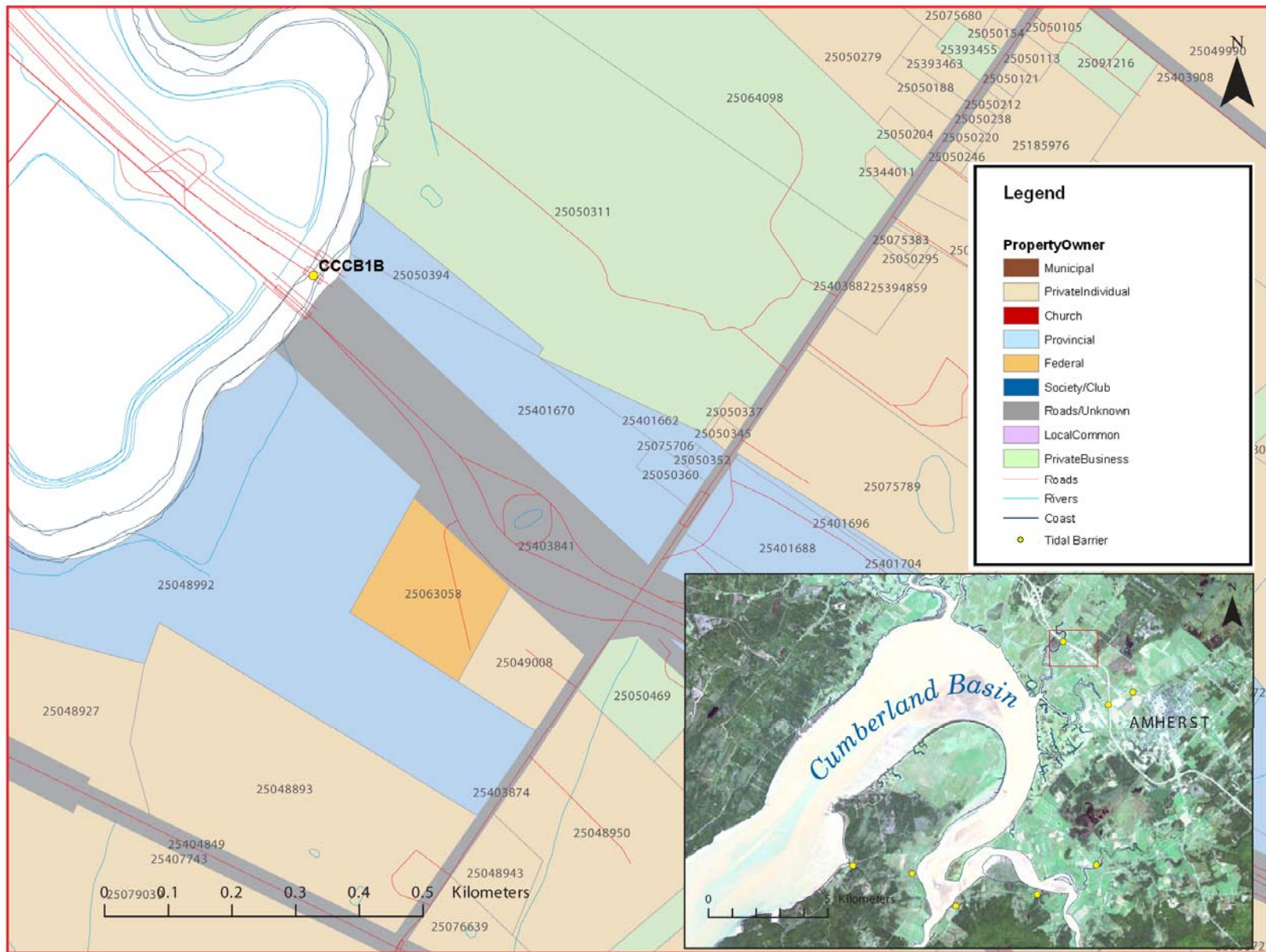


Figure 3: Property management and tidal barrier data for Nova Scotia (Service Nova Scotia, and Municipal Relations)

Air Photo Not Available in GIS Database

Access through Land Information Services:

Photo Number: 95006-50

