

Site CCCB 19B: Little River (Near Lower Cove) **Date Assessed:** July 8, Aug. 27-8, Nov. 18, 2003

GPS Coordinates: N 45° 43' 03.7''
W 64° 26' 02.8''

Crossing Status: No restriction

Road Crossing: A 21m long wooden bridge that is beginning to show age and wear.

Crossing Condition: Road is in disrepair with holes at the joints of the road and the bridge, and the supports under the bridge may soon need to be repaired or replaced.

Restriction indicators: None

Downstream of Crossing

Creek: Smooth flow.

Land: Beach and bay.

Upstream of Crossing

Creek: Smooth flow.

Land: Salt marsh vegetation, rapid rise in elevation up to blueberry fields.

Comments: Repair or replace bridge, maintaining opening width. Remove rock material under bridge in order to increase opening and improve flow.

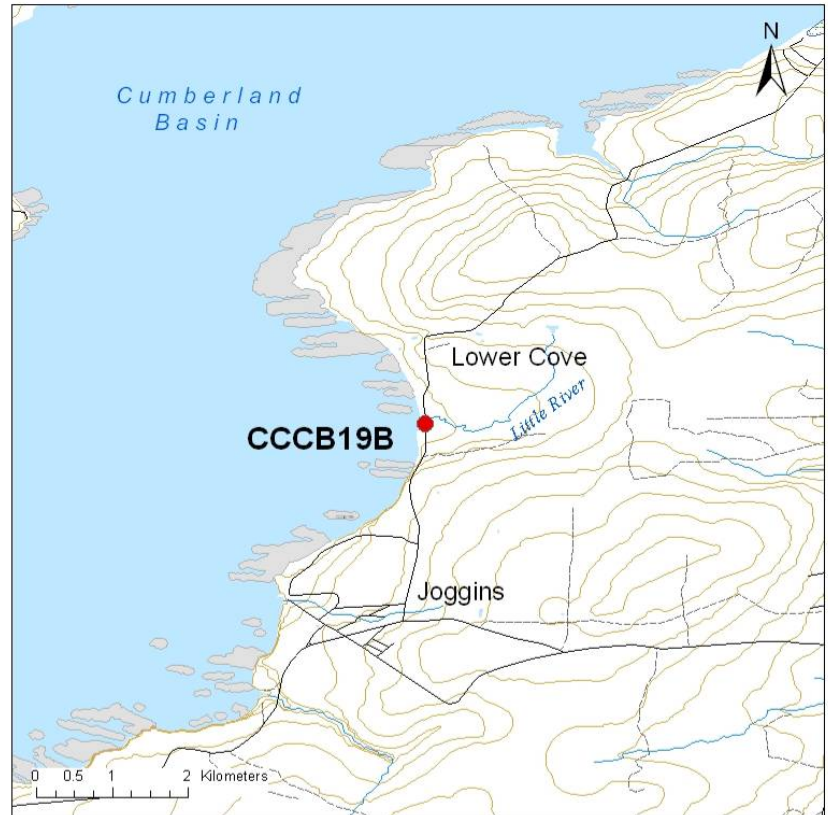


Figure 1. Downstream of the bridge on the beach.



Figure 2.
Downstream
from under the
bridge.



Figure 3. Upstream
creek and salt marsh.
The hill in the
background is where
the blueberry fields
begin.

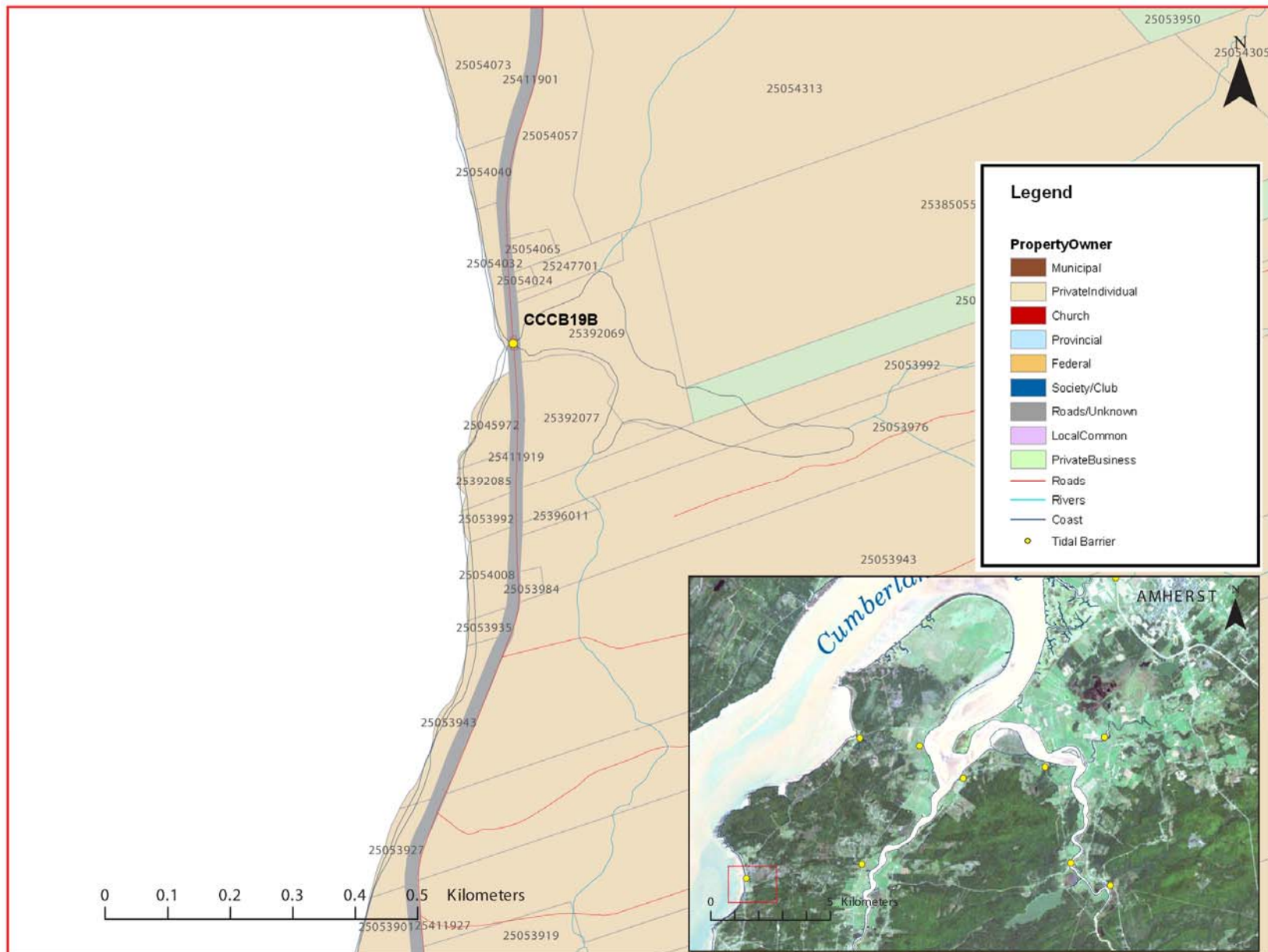


Figure 4: Property management and tidal barrier data for Nova Scotia (Service Nova Scotia, and Municipal Relations)

Air Photo Not Available in GIS Database

Access through Land Information Services:

Photo Number: 95012-173