

Site CCCB 18A: Mill Creek

Date Assessed: July 8, Aug. 27-8,
Nov. 18, 2003

GPS Coordinates: N 45° 46' 15.2''
W 64° 22' 27.4''

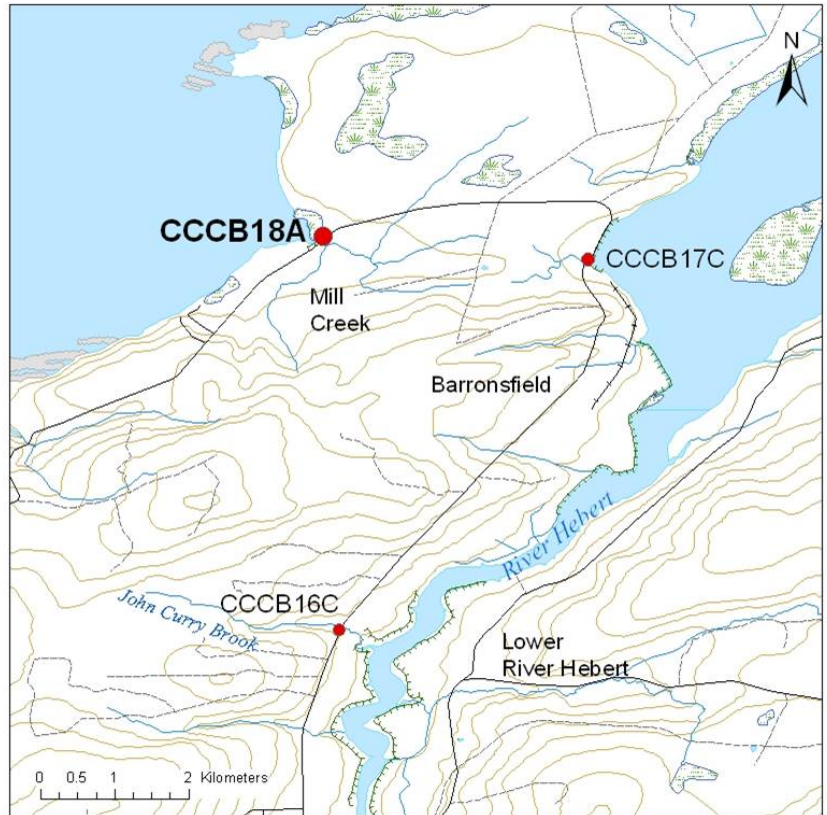
Crossing Status: Complete restriction.

Road Crossing: A 1m diameter concrete culvert with tide gate punched through an old wooden aboiteau (small causeway-aboiteau structure).

Crossing Condition: Crossing design (aboiteau) is intact and functioning, however at the time of inspection the downstream end was completely clogged with debris.

Restriction Indicators:

- Difference in water levels
- Turbulent water flow
- Difference in stream width
- Aboiteau/tide gate
- Difference in vegetation
- Slack water
- Scour pool
- Divergent channel
- Bank slumping



Downstream of Crossing

Creek: 19m wide scour pool in front of culvert and bank slumping.

Land: Large salt marsh with no apparent land use. Land adjacent to marsh still actively farmed.

Upstream of Crossing

Creek: Channel is approximately 3m wide with some scouring and still water.

Land: No apparent land use.

Comments: Initially remove tidal gate and ultimately replace crossing with a much larger opening.



Figure 1. The downstream view of the culvert showing the bank erosion from pooling and perspective on how small the culvert is with respect to the pool.



Figure 2. The upstream creek from the road which is noticeably smaller than downstream. Invasion of fresh water vegetation over the marsh surface.



Figure 3. Upstream side of the culvert. There is a slight pooling in front of it. The old wooden box culvert is easily visible, with just the top of the round concrete culvert visible.



Figure 4. Downstream creek from the road. The pooling is evident in this photo.

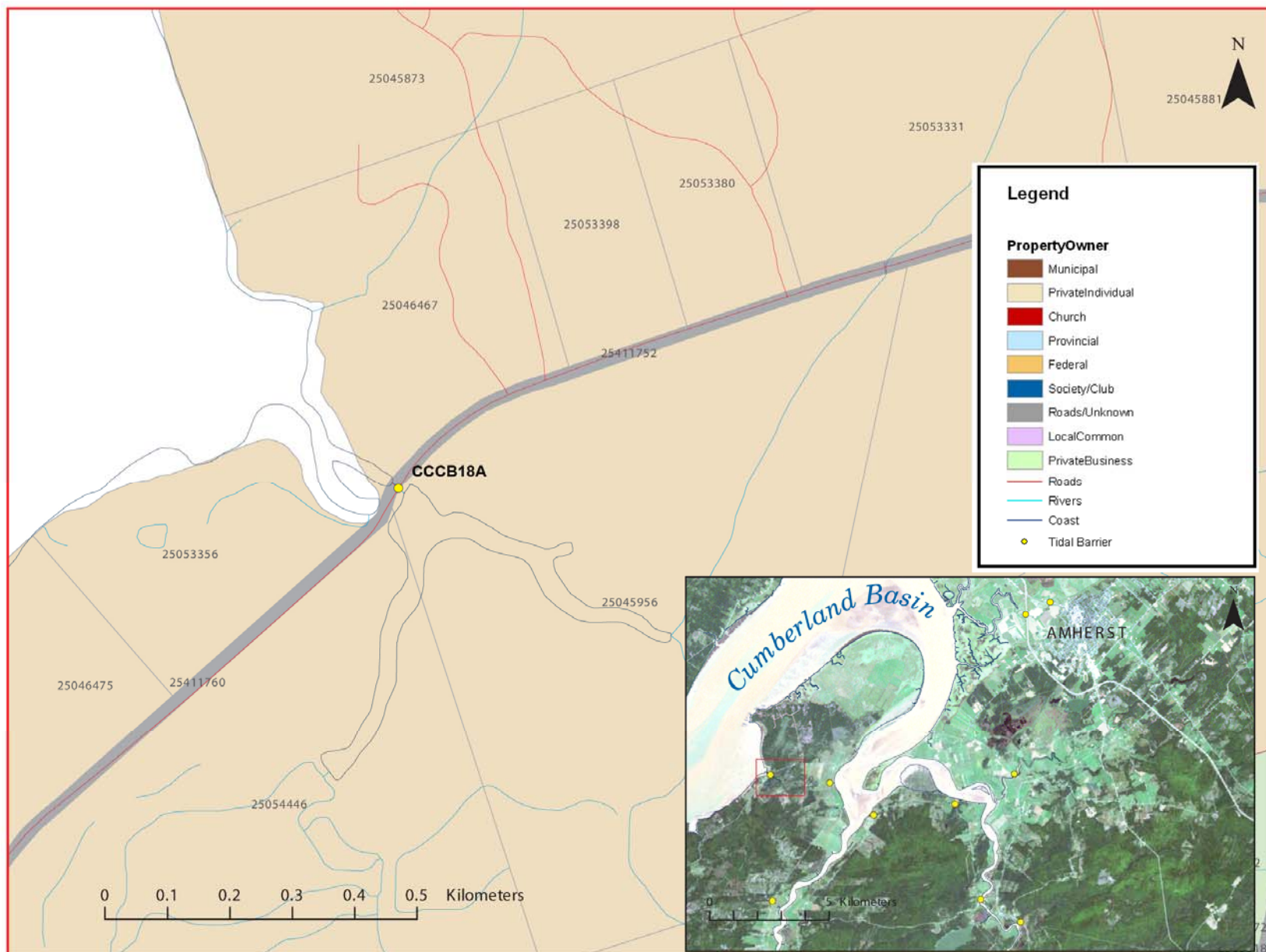


Figure 5: Property management and tidal barrier data for Nova Scotia (Service Nova Scotia, and Municipal Relations)

Air Photo Not Available in GIS Database

Access through Land Information Services:

Photo Number: 95003-03