

Site CCCB 15B: River Hebert (Hwy 242 Bridge)      Date Assessed: July 8, Aug. 27-8, Nov. 18, 2003

GPS Coordinates:    N 45° 41' 25.4''  
                              W 64° 22' 24.7''

Crossing Status: No restriction.

Road Crossing: 70m concrete bridge.

Crossing Condition: Structure is intact.

Restriction Indicators: None

**Downstream of Crossing**

River: Smooth flow, 50m wide.

Land: Dykes run along both sides of the river in various places. Farmland or residential use.

**Upstream of Crossing**

River: Smooth flow, 50m wide.

Land: Dykes run along both sides of the river. Farmland or residential use.

Comments: If replacement is ever needed, maintain the size of the bridge. There may be opportunities along this river to remove dykes and restore river floodplain and marsh habitat.

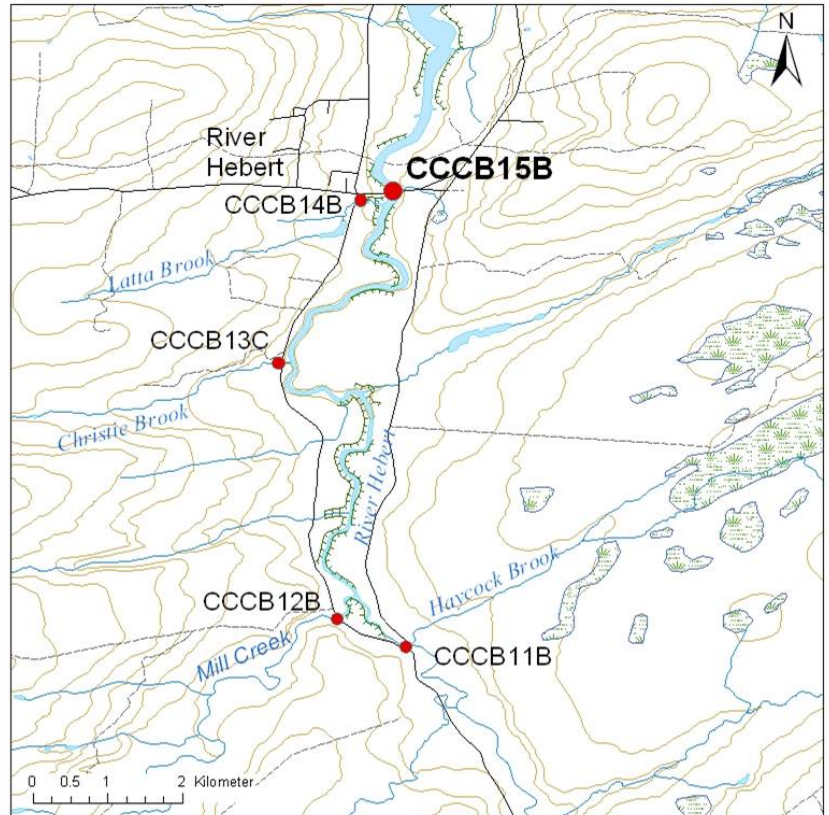


Figure 1. Bridge seen from the downstream side.



Figure 2. The river downstream from standing on the bridge.



Figure 3. The river upstream from standing on the bridge.

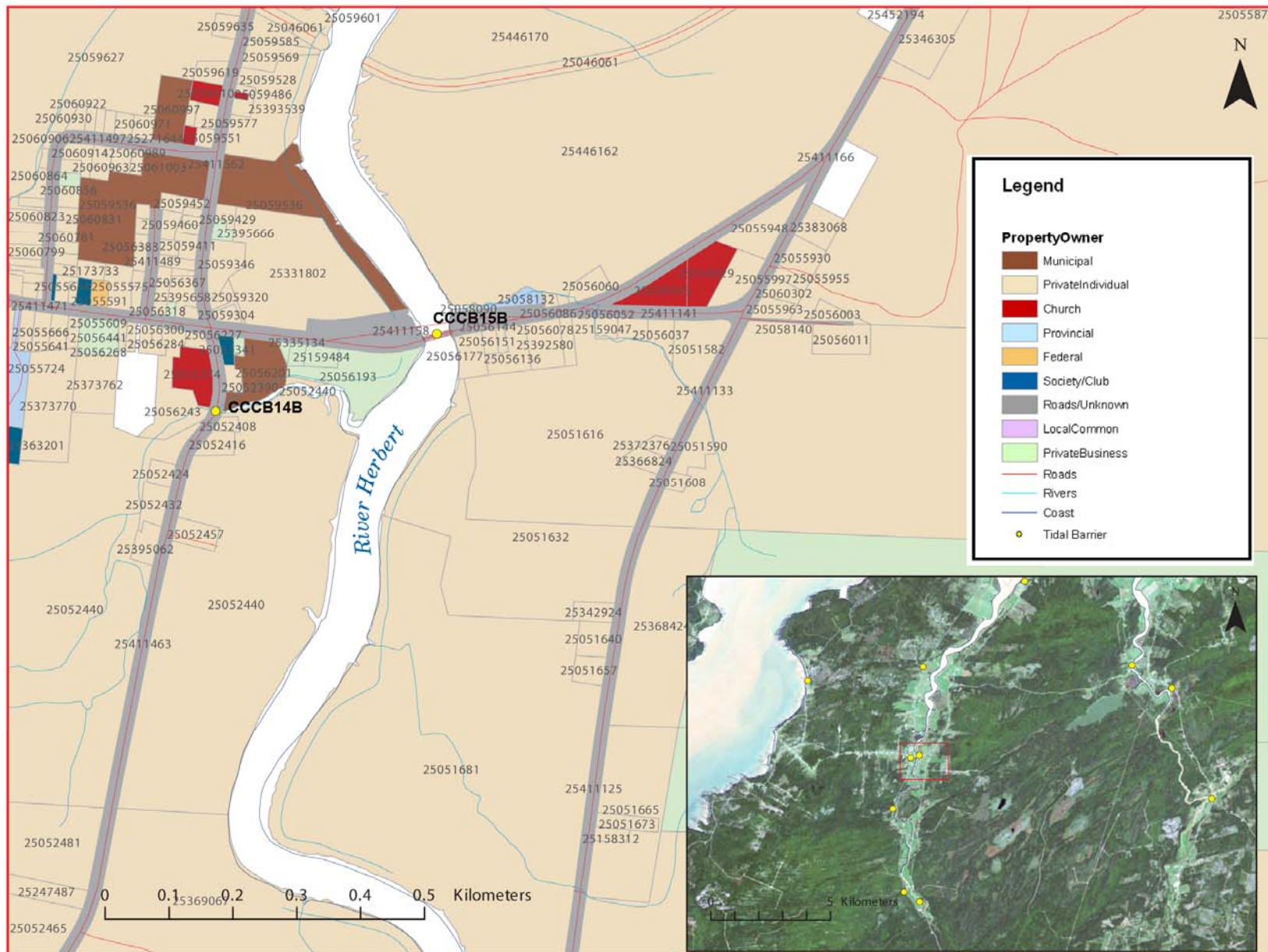


Figure 4: Property management and tidal barrier data for Nova Scotia (Service Nova Scotia, and Municipal Relations)

Air Photo Not Available in GIS Database

Access through Land Information Services:

Photo Number: 95012-9