

Site CCCB 14B: Latta Brook (River Hebert)

Date Assessed: July 8, Aug. 27-8,
Nov. 18, 2003

GPS Coordinates: N 45° 41' 21.1''
W 64° 22' 40.0''

Crossing Status: No restriction.

Road Crossing: 3m long wooden bridge.

Crossing Condition: Structure is old and showing wear, but remains intact.

Restriction Indicators: None

Downstream of Crossing

Creek: Creek is 2m wide with steep banks on either side.

Land: House located immediately adjacent to the creek on right bank.

Upstream of Crossing

Creek: Creek is 2m wide.

Land: Residential area.

Comments: When repairing or replacing, maintain or enlarge opening. .

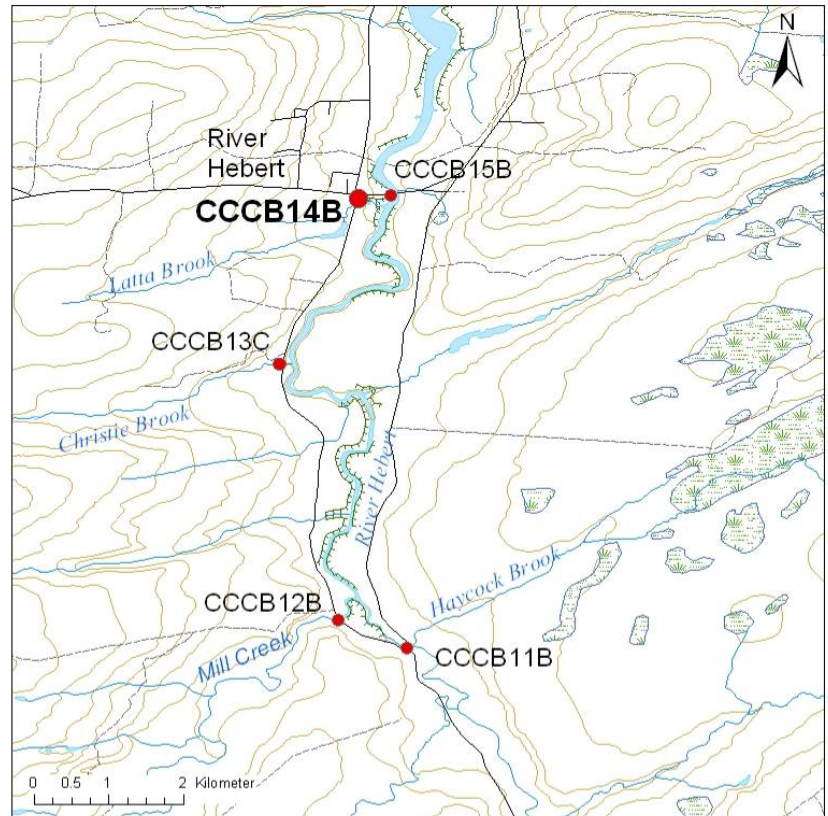


Figure 1. Downstream of the bridge. There are steep banks on either side of the creek, with a house near the right bank.



Figure 2. Looking downstream from the road.

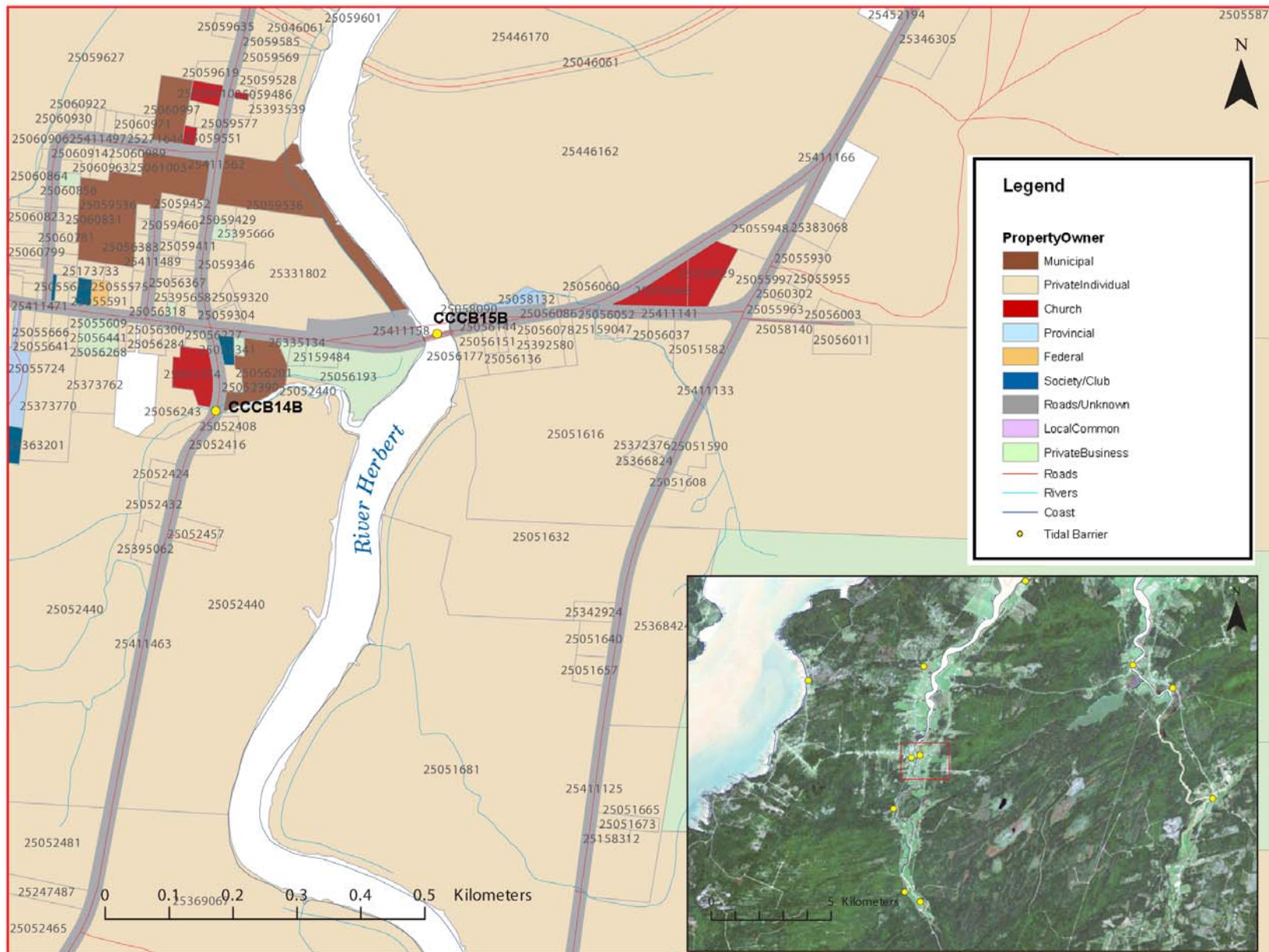


Figure 3: Property management and tidal barrier data for Nova Scotia (Service Nova Scotia, and Municipal Relations)

Air Photo Not Available in GIS Database

Access through Land Information Services:

Photo Number: 95012-9