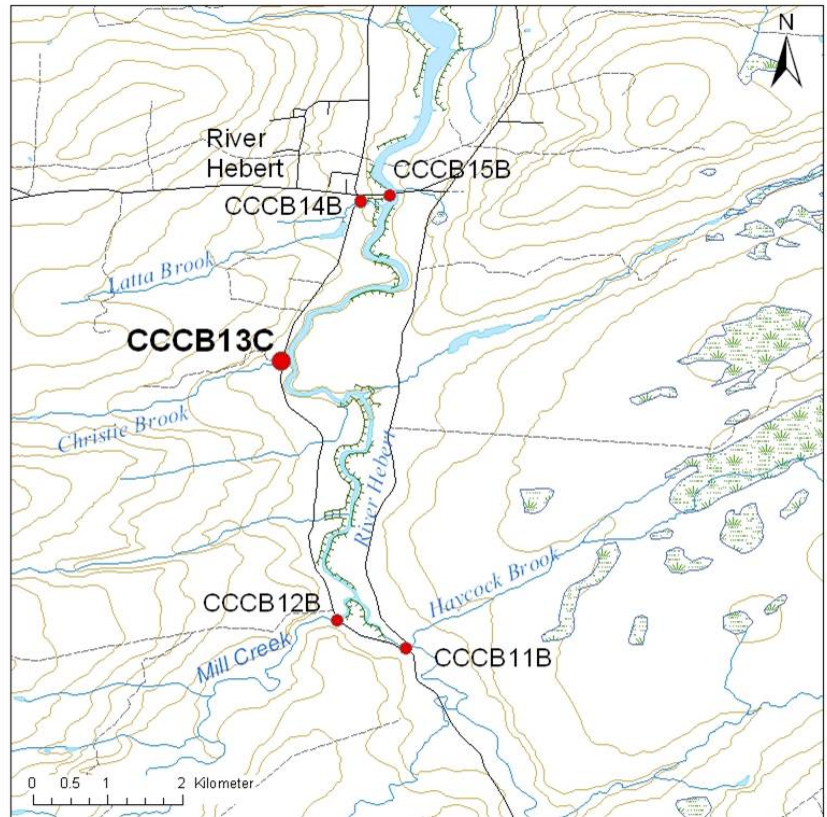


Site CCCB 13C: Christie Brook (River Hebert) **Date Assessed:** July 8, Aug. 27-8,
Nov. 18, 2003

GPS Coordinates: N 45° 40' 11.6''
 W 64° 23' 13.4''

Crossing Status: Partial restriction.

Road Crossing: 2 large concrete culvert, 1.5m diameter each. Culverts are placed approximately 3m above creek bed on the downstream side representing a significant obstruction to tidal flow and fish passage. When the crossing was first visited in August, 2003, a restrictive wooden box culvert was assessed and determined to be in considerable disrepair. Upon revisiting in November it was discovered the crossing had been replaced by two round concrete culverts that did not improve hydraulic condition or fish passage. Riprap is already collapsing into and clogging new culverts.



Restriction Indicators:

- Difference in water levels
- Scour pool
- Difference in stream width
- Difference in vegetation

Hanging culvert

Downstream of Crossing

Creek: Creek is approximately 10m wide with remnants of old bridge structure still visible downstream.

Land: No apparent land use.

Upstream of Crossing

Creek: Creek is split into two channels, each directed towards a culvert. Gravel is already beginning to accumulate inside culverts.

Land: A small sand and gravel pit is visible upstream, but marsh/creek intact and riparian zone predominantly woodland.

Comments: Enlarge opening and eliminate hanging culvert, address fish passage.



Figure 1. The downstream view of the new culverts.



Figure 2. The downstream view of the old culverts



Figure 3. Upstream of the new culverts.



Figure 4. Close up of the old, double chambered, wooden culvert.



Figure 5. Downstream of the crossing. Remnants of the old bridge are visible.

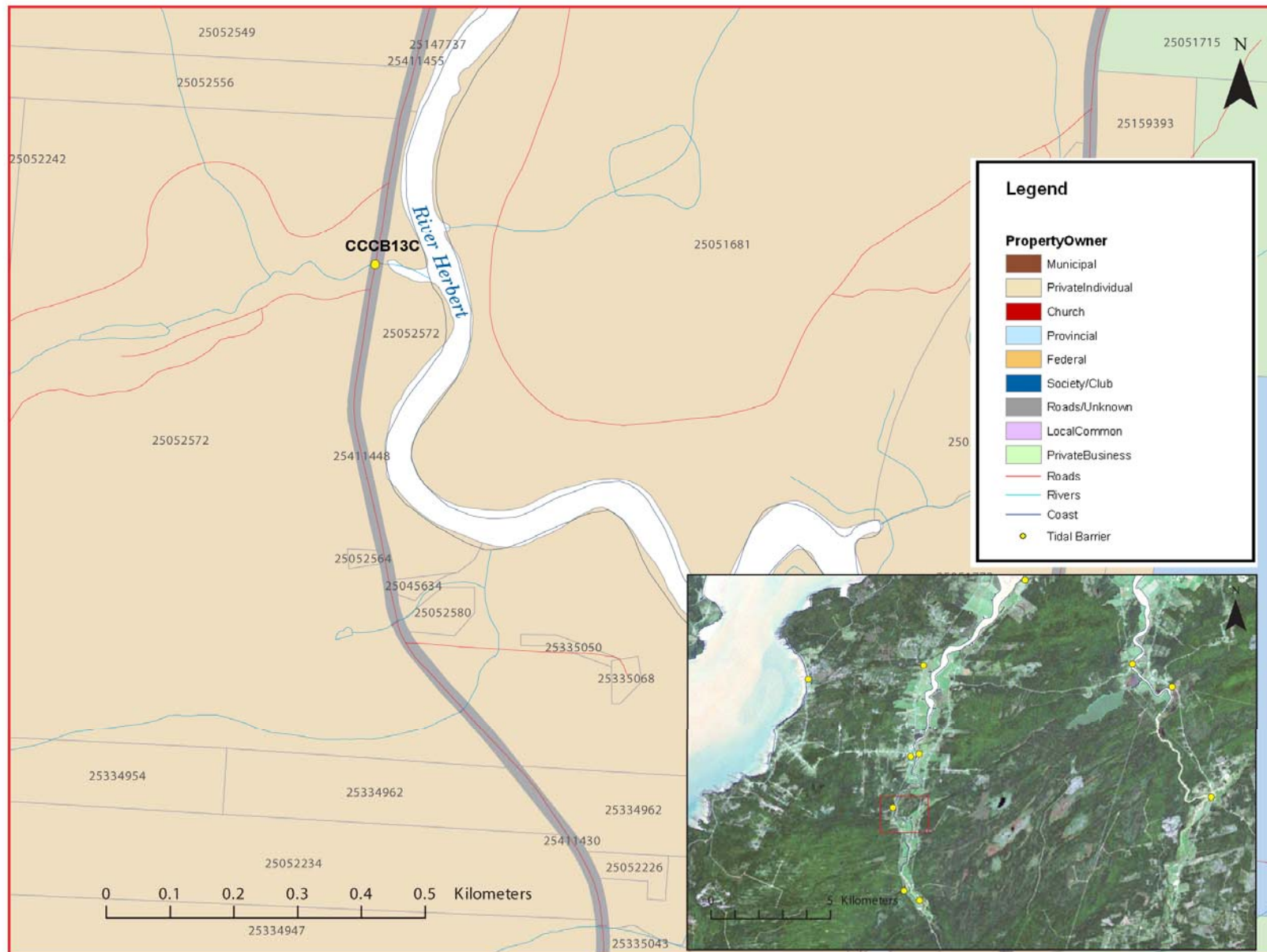


Figure 6: Property management and tidal barrier data for Nova Scotia (Service Nova Scotia, and Municipal Relations)

Air Photo Not Available in GIS Database

Access through Land Information Services:

Photo Number: 95011-147