

Site CCCB 12B: Mill Creek (River Hebert)

Date Assessed: July 8, Aug. 27-8,  
Nov. 18, 2003

GPS Coordinates: N 45° 38' 21.3''  
W 64° 22' 49.4''

Crossing Status: No restriction

Road Crossing: 18m long steel framed bridge with concrete footings and wooden plank surface.

Crossing Condition: Wooden planks are in disrepair.

Restriction Indicators: None

**Downstream of Crossing**

Creek: 12m wide creek with a straight, smooth flow.

Land: Marginal agricultural use (hay).

**Upstream of Crossing**

Creek: 12m wide creek with a straight, smooth flow.

Land: No apparent land use.

Comments: Non restrictive, maintain opening width..

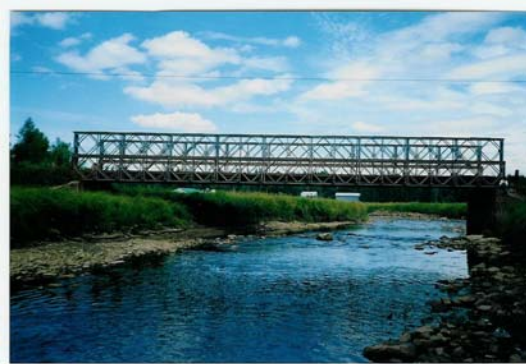
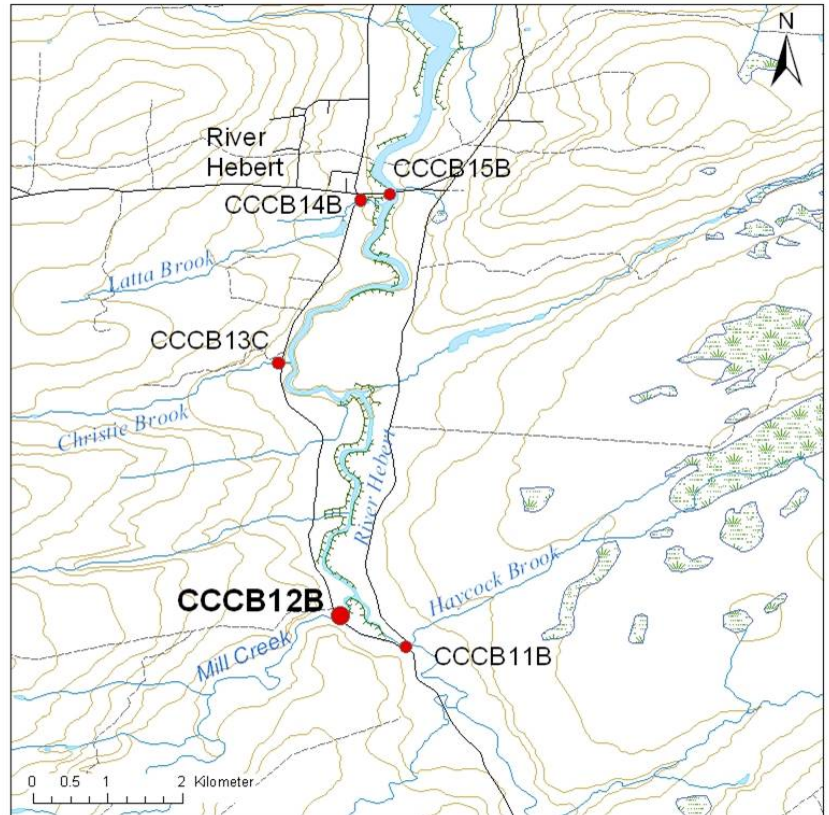
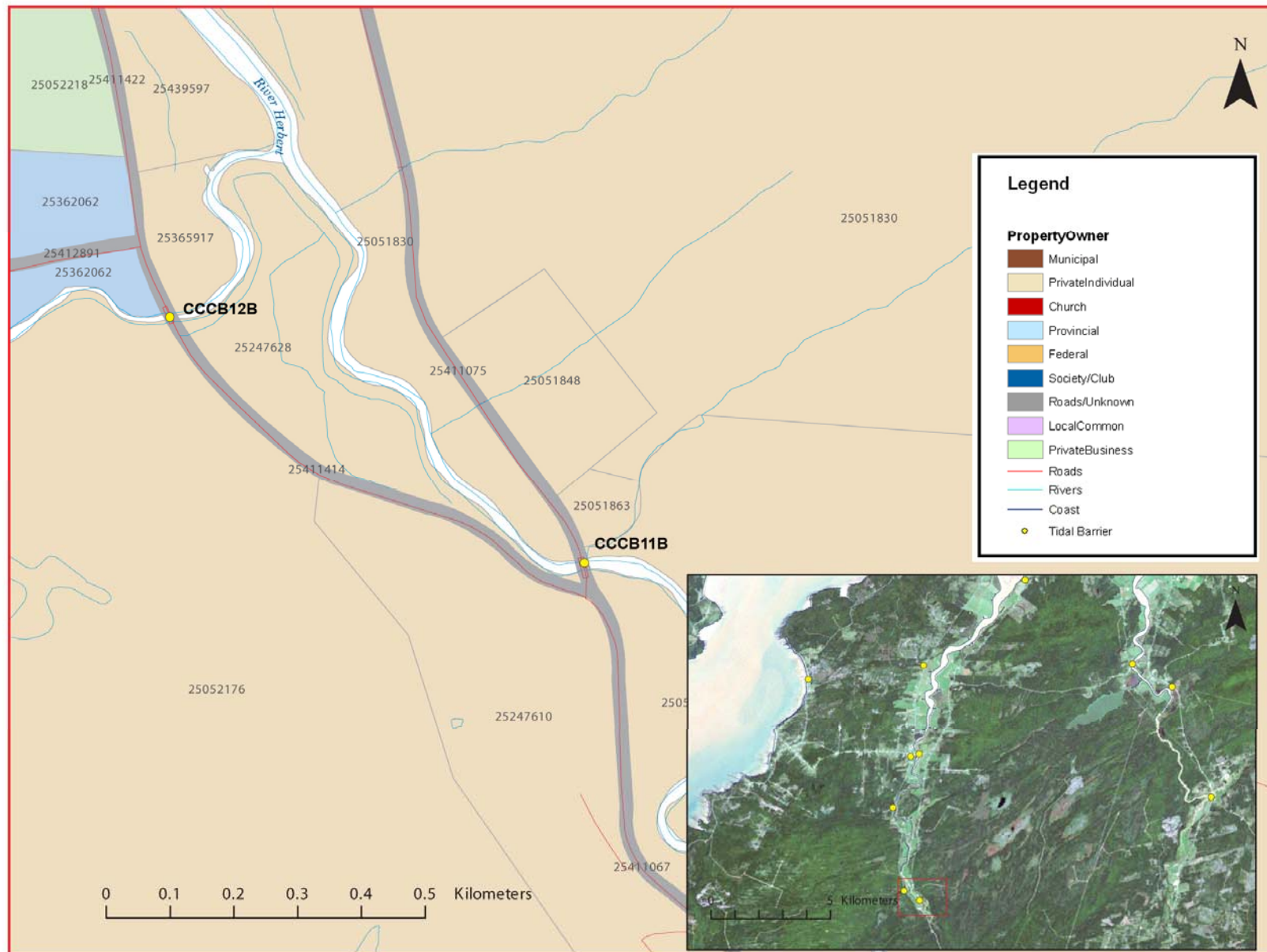


Figure 1. An upstream view of a non restrictive bridge.



**Figure 2:** Property management and tidal barrier data for Nova Scotia (Service Nova Scotia, and Municipal Relations)

Air Photo Not Available in GIS Database

Access through Land Information Services:

Photo Number: 95020-116