

Site CCCB 10C: Maccan Loop

Date Assessed: July 8, Aug. 27-8,
Nov. 18, 2003

GPS Coordinates: N 45° 45' 22.7''
W 64° 19' 06.3''

Crossing Status: Complete restriction.

Road Crossing: 1m/1m wooden
culvert (potential aboiteaux).

Crossing Condition: Collapsed and
buried on downstream side, rotting and
starting to collapse on the upstream
side. Shoulder of road above
downstream end appears to be
collapsing/slumping.

- Restriction Indicators:
- Difference in water levels
 - Scour pool
 - Difference in stream width
 - Bank slumping
 - Difference in vegetation
 - Turbulent water flow



Downstream of Crossing

Creek: Creek is 5m wide with a turbulent flow. Banks are slumping, and there are remnants of an old aboiteau causing a 0.5m drop.

Land: The culvert is completely buried by boulders. Wooded.

Upstream of Crossing

Creek: Creek is 1m wide.

Land: Fallow/wild agricultural land/marsh.

Comments: Replace culvert with a larger opening. At a minimum excavate downstream end of culvert and repair road.



Figure 1. Downstream end of crossing completely buried by rock and other materials. Unclear as to whether a tidal gate is present or not. Damage to shoulder of road surface evident in picture.

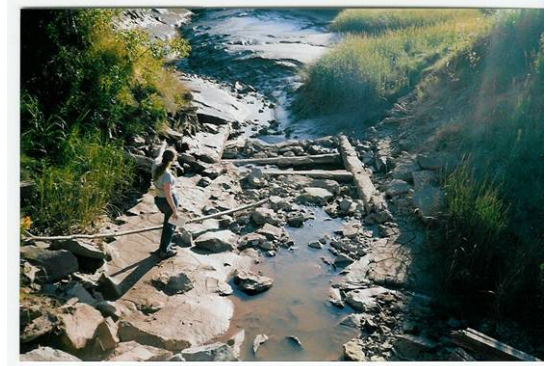


Figure 2. Downstream of the crossing. Remnants of an old structure, possibly an aboiteau, are visible.



Figure 3. The upstream side of the culvert. Some debris is visible as well as damage to culvert.



Figure 4. Upstream of the crossing. Photo taken from the road.

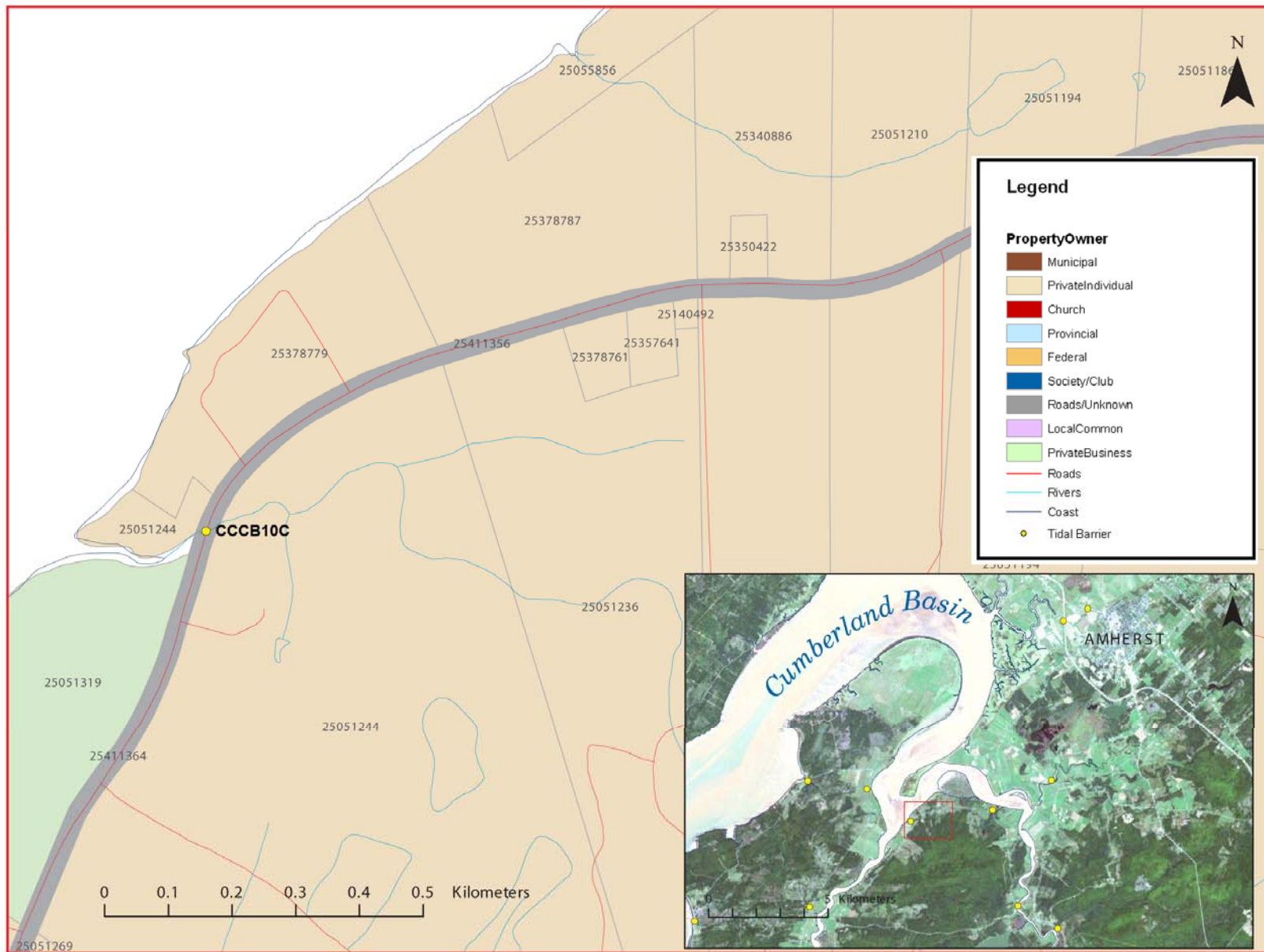


Figure 5: Property management and tidal barrier data for Nova Scotia (Service Nova Scotia, and Municipal Relations)

Air Photo Not Available in GIS Database

Access through Land Information Services:

Photo Number: 95014-16