

Site TA3B: Salmon River (Main Street)

Date Assessed: 06/19/02

GPS Coordinates: N 45° 22' 6.6''
W 63° 16' 22.4''

Crossing Status: No restriction.

Road Crossing: Bridge, steel, 41m wide

Crossing Condition: Structure is intact.

Restriction Indicators: None

Downstream of Crossing

Creek: 40.9m wide, smooth, straight flow.

Land: Industrial and residential land use, flood plain.

Upstream of Crossing

Creek: 30m wide with straight, turbulent flow over bare rock.

Land: Residential with Railway bridge crossing further upstream.

Comments: Concrete wall (~25m) on one side of downstream bank to prevent erosion.

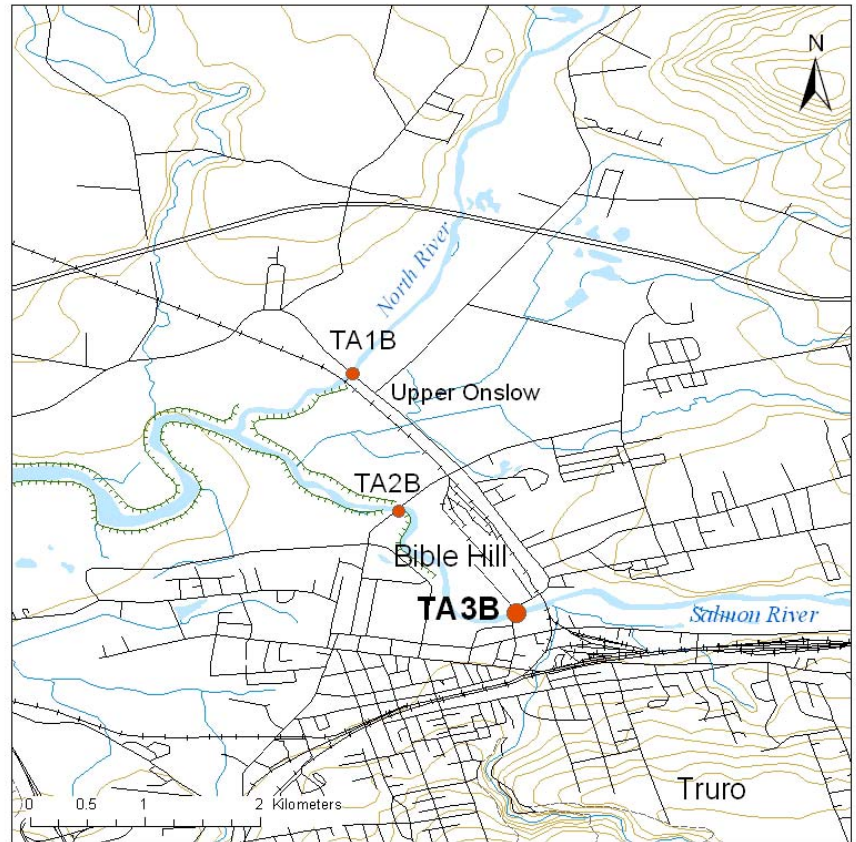


Figure 1



Figure 2



Figure 3

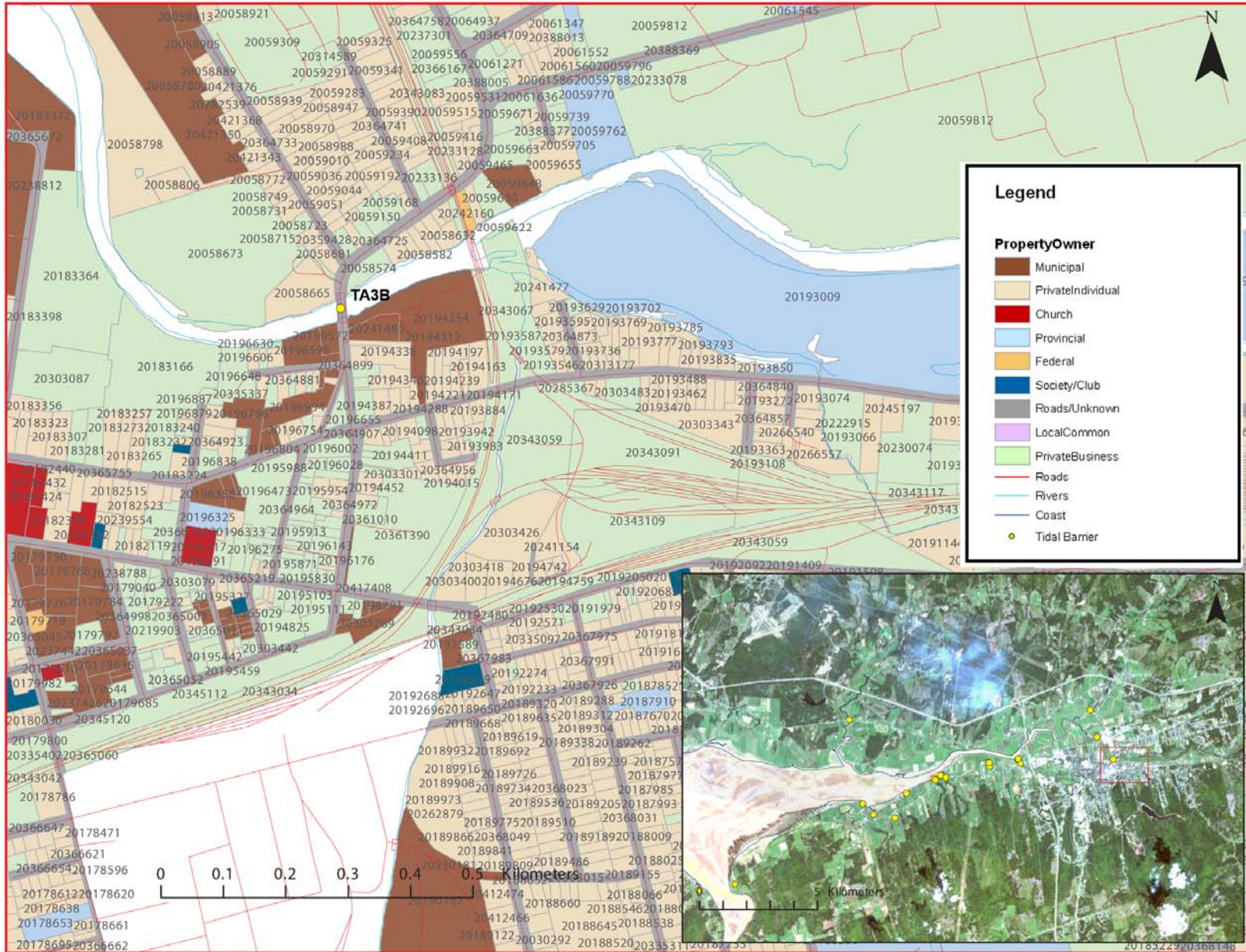


Figure 4: Property management and tidal barrier data for Nova Scotia (Service Nova Scotia, and Municipal Relations)

Air Photo Not Available in GIS Database

Access through Land Information Services:

Photo Number: 04312-27