

Site TA2B: Salmon River (Park Street)

Date Assessed: 06/19/02

GPS Coordinates: N 45° 22' 37.1''
W 63° 16' 54.2''

Crossing Status: No restriction.

Road Crossing: Bridge, steel, 71.4m wide

Crossing Condition: Structure is intact.

Restriction Indicators: None

Downstream of Crossing

Creek: 37m wide, smooth, straight flow.

Land: Agricultural with mixed commercial land use.

Upstream of Crossing

Creek: 36.1m wide, smooth, straight flow.

Land: Dykes present along river, industrial land use, mixed with recreational.

Comments: Structure is not restricting tidal flow, maintain size of opening

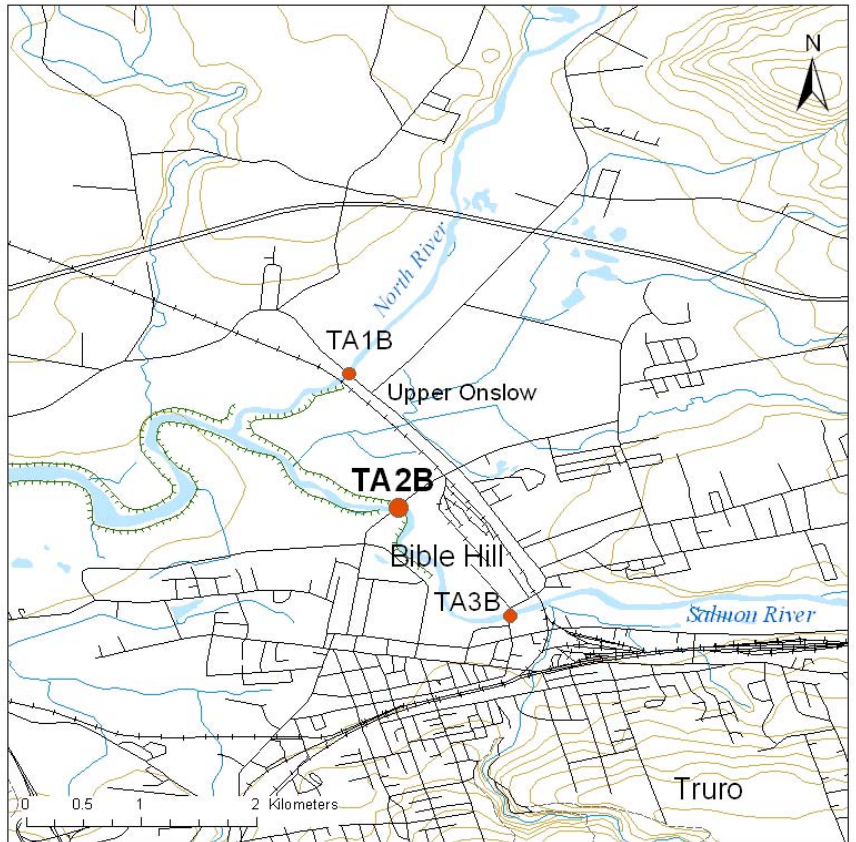


Figure 1



Figure 2



Figure 3

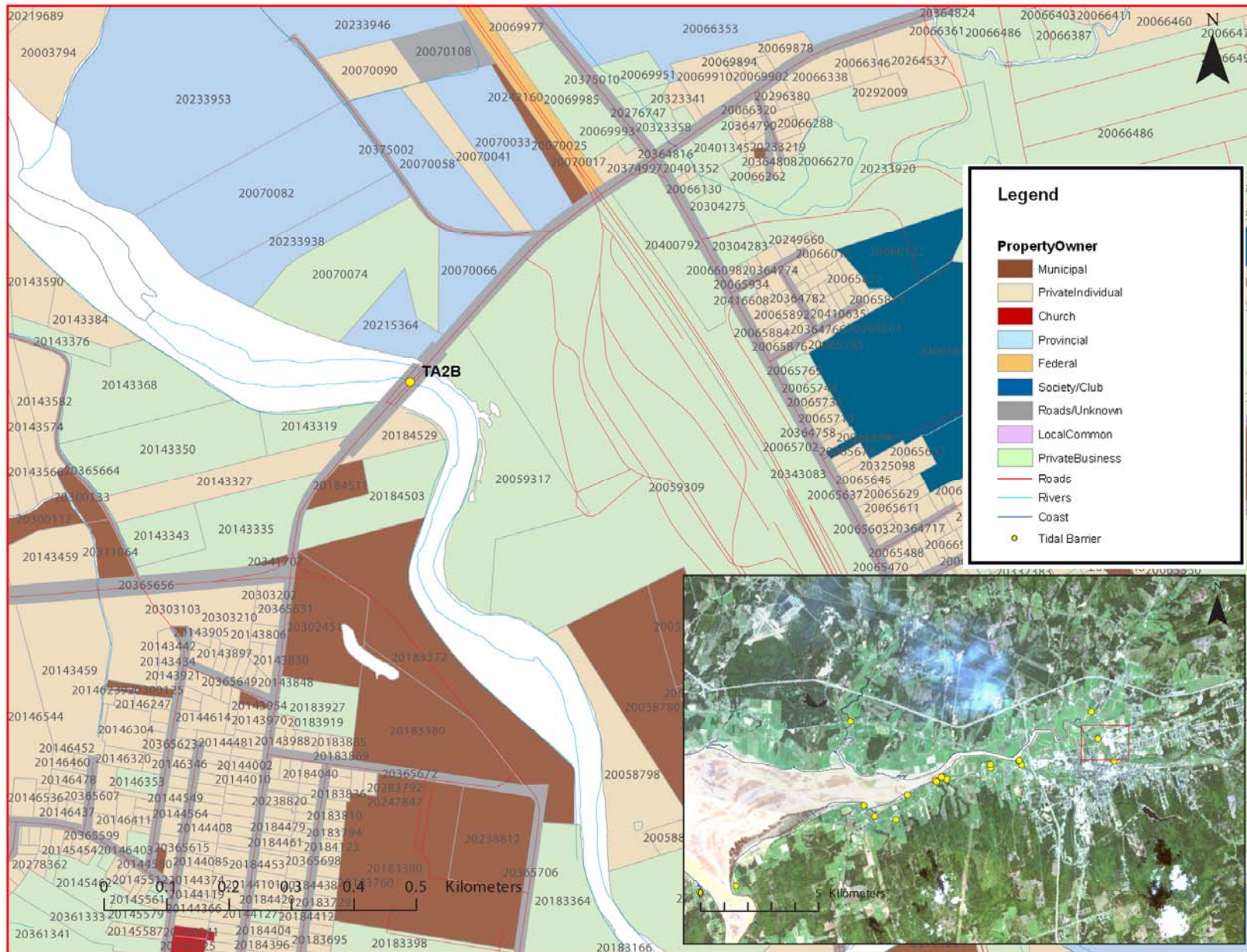


Figure 4: Property management and tidal barrier data for Nova Scotia (Service Nova Scotia, and Municipal Relations)

Air Photo Not Available in GIS Database

Access through Land Information Services:

Photo Number: 94002-77