

Site ST8B: Stewiacke River (Route 277, Stewiacke East)

Date Assessed: 21/06/02

GPS Coordinates: N 45° 8' 45.1''
W 63° 17' 51.4''

Crossing Status: No Restriction

Road Crossing: Bridge, concrete, 43m wide

Crossing Condition: Intact

Restriction Indicators: None

Downstream of Crossing

Creek: 33m wide, smooth, straight flow with some bank slumping

Land: Active farmland, residential

Upstream of Crossing

Creek: 34m wide, smooth, straight flow with some bank slumping

Land: Active farmland, residential

Comments: Maintain size of opening

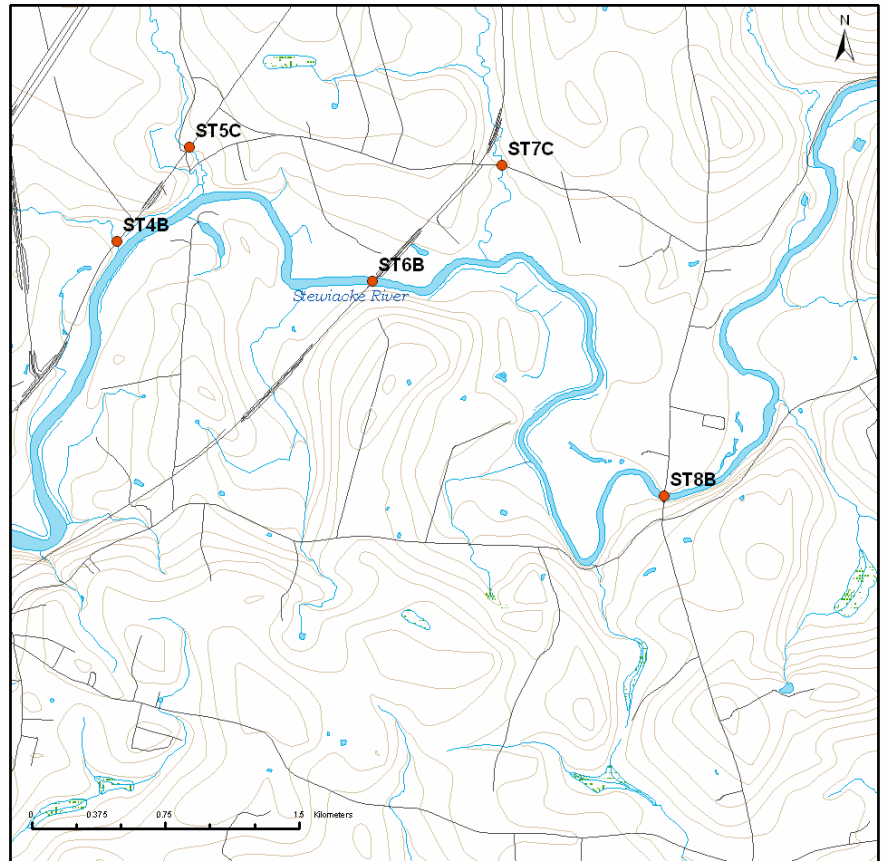


Figure 1



Figure 2



Figure 3



Figure 4

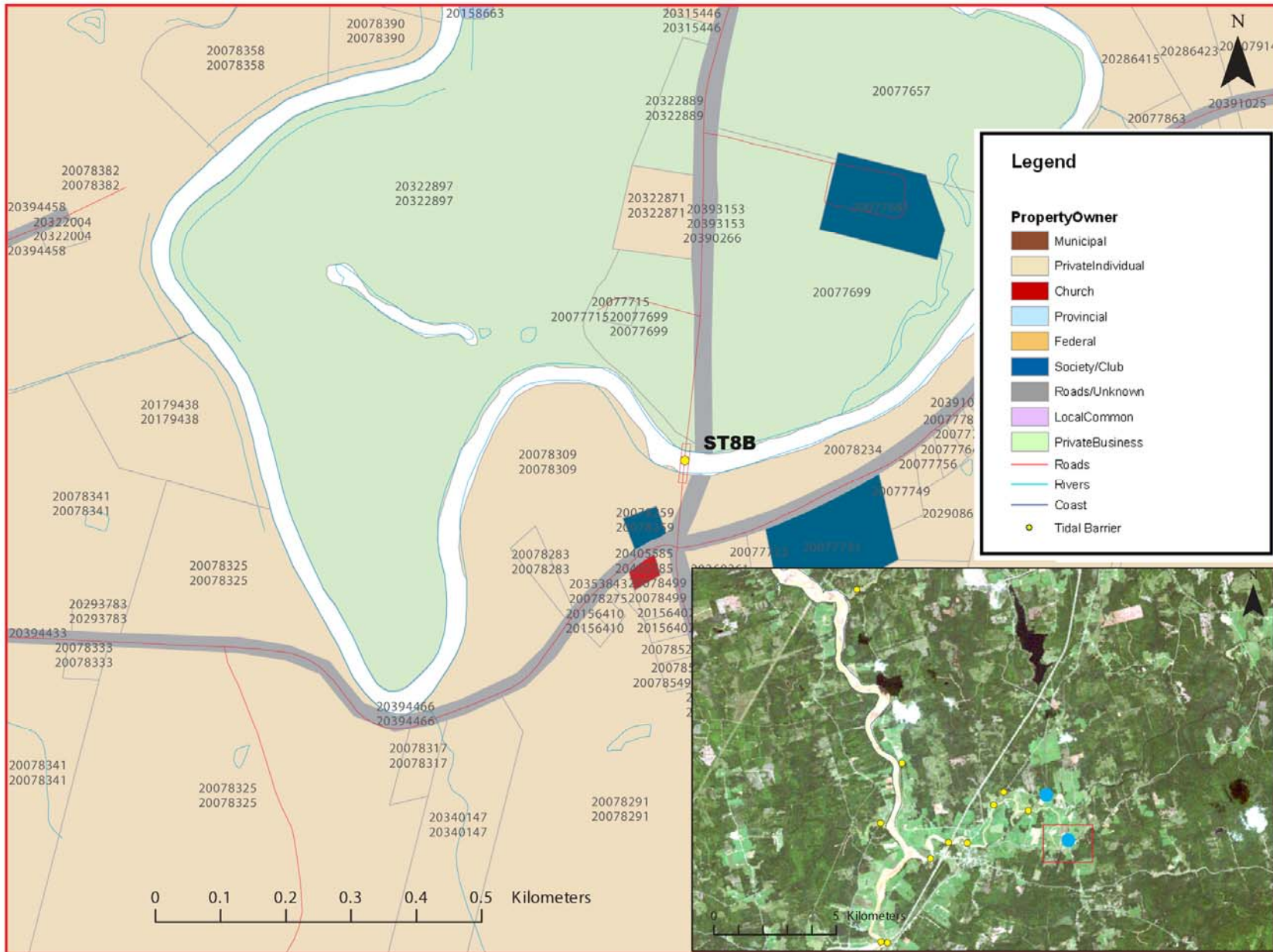


Figure 5: Property management and tidal barrier data for Nova Scotia (Service Nova Scotia, and Municipal Relations)

Air Photo Not Available in GIS Database

Access through Land Information Services:

Photo Number: 04327-141