

Site ST7C: McKay Siding (Stewiacke River tributary) **Date Assessed:** 21/06/02

GPS Coordinates: N 45° 9' 44.2''
 W 63° 18' 33.8''

Crossing Status: Partial Restriction

Road Crossing: Culvert, wooden, 2m

Crossing Condition: Intact

Restriction Indicators:
 Difference in stream width

Downstream of Crossing

Creek: 4.6m in width, smooth flow, bank slumping

Land: Active farmland, marshland

Upstream of Crossing

Creek: 3.5m, smooth flow, bank slumping

Land: Residential, marshland, wooded area and railway crossing

Comments: This crossing is not causing a large restriction to flow however the crossing is smaller than the width of the river. The opening should be enlarged when repairs are made.

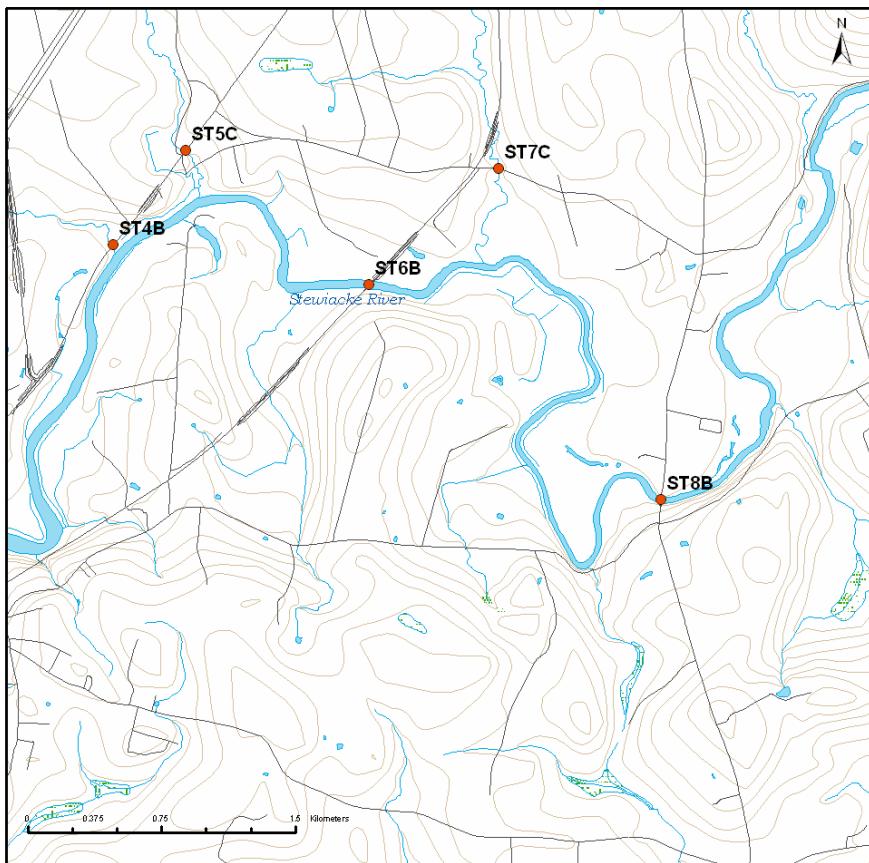


Figure 1



Figure 2



Figure 3

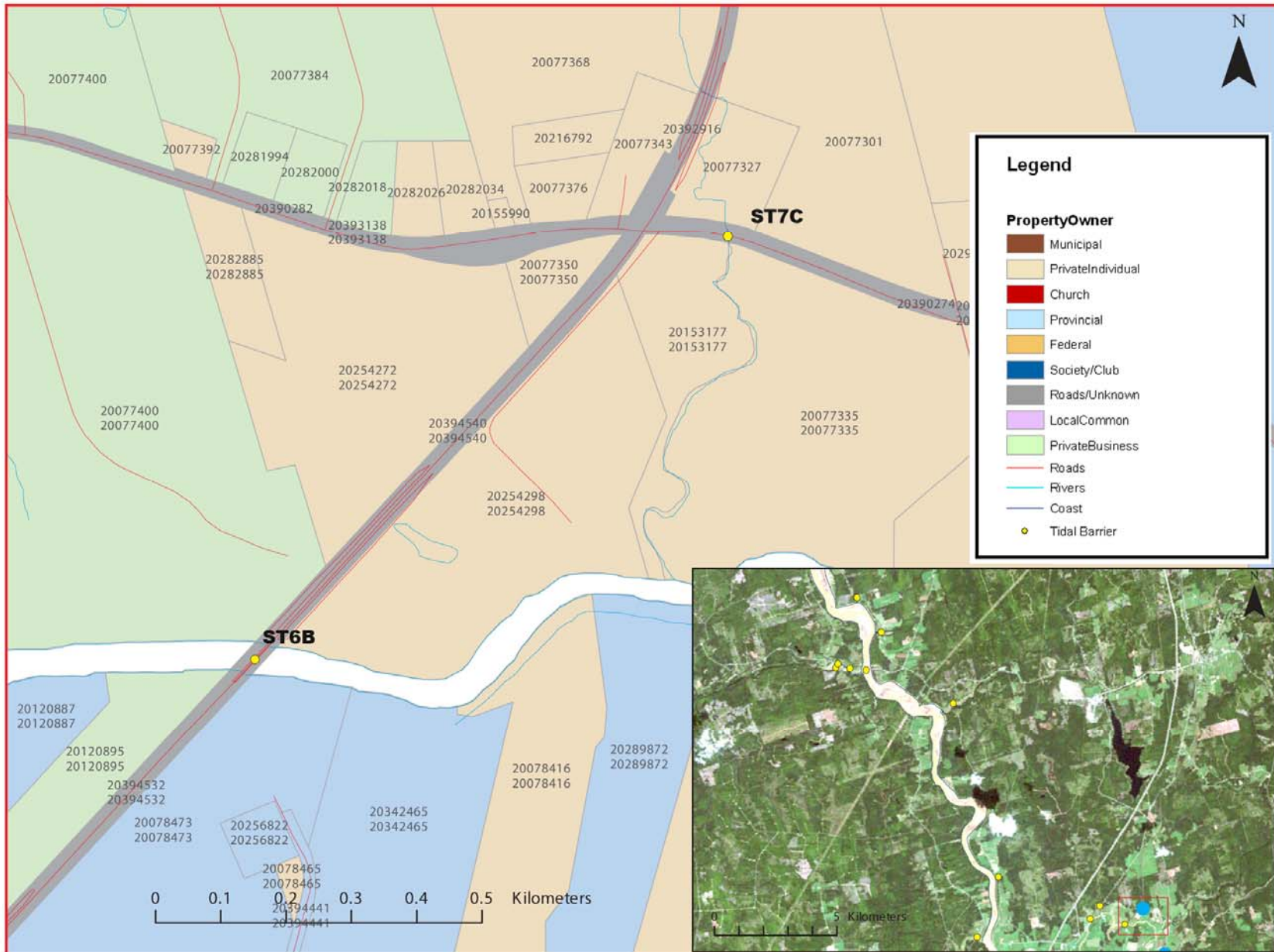


Figure 4: Property management and tidal barrier data for Nova Scotia (Service Nova Scotia, and Municipal Relations)

Air Photo Not Available in GIS Database

Access through Land Information Services:

Photo Number: 04327-94