

**Site ST3B:** Stewiacke River (Route 2)

**Date Assessed:** 21/06/02

**GPS Coordinates:** N 45° 8' 4.07"  
W 63° 21' 0.7"

**Crossing Status:** No Restriction

**Road Crossing:** Bridge, 82.5m opening

**Crossing Condition:** Intact

**Restriction Indicators:** None

### Downstream of Crossing

**Creek:** 71m wide, smooth straight flow, some bank slumping

**Land:** Residential, agricultural dykeland

### Upstream of Crossing

**Creek:** 68m wide, smooth straight flow, some bank slumping

**Land:** Agricultural dykeland, some recreation land use

**Comments:** Maintain size of opening when repairing bridge.

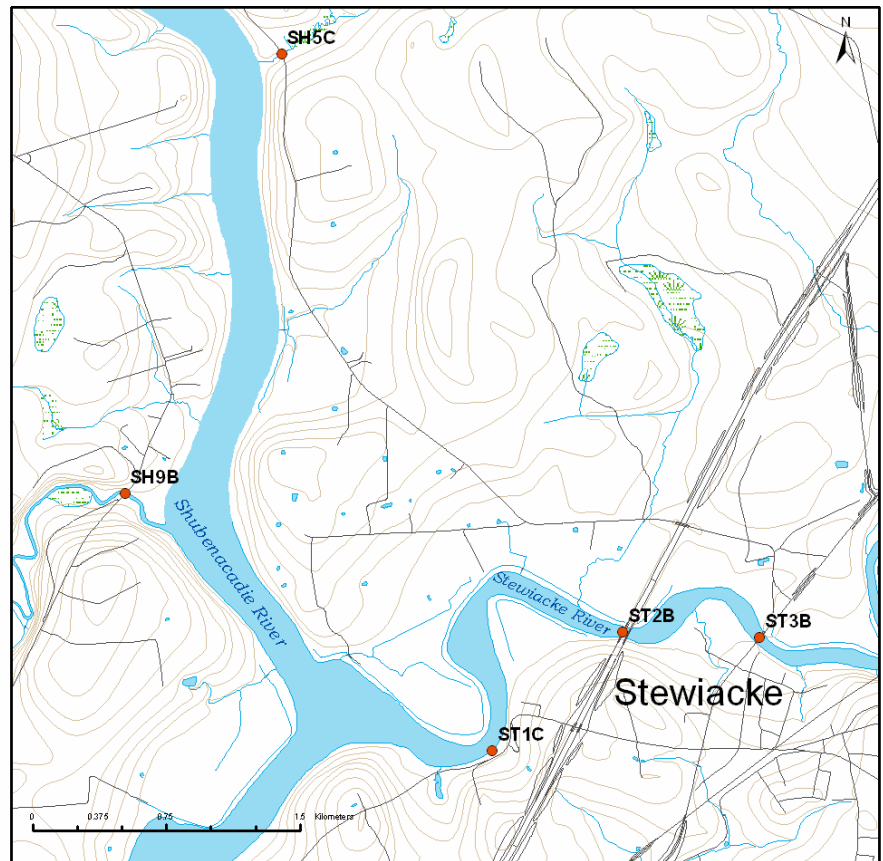
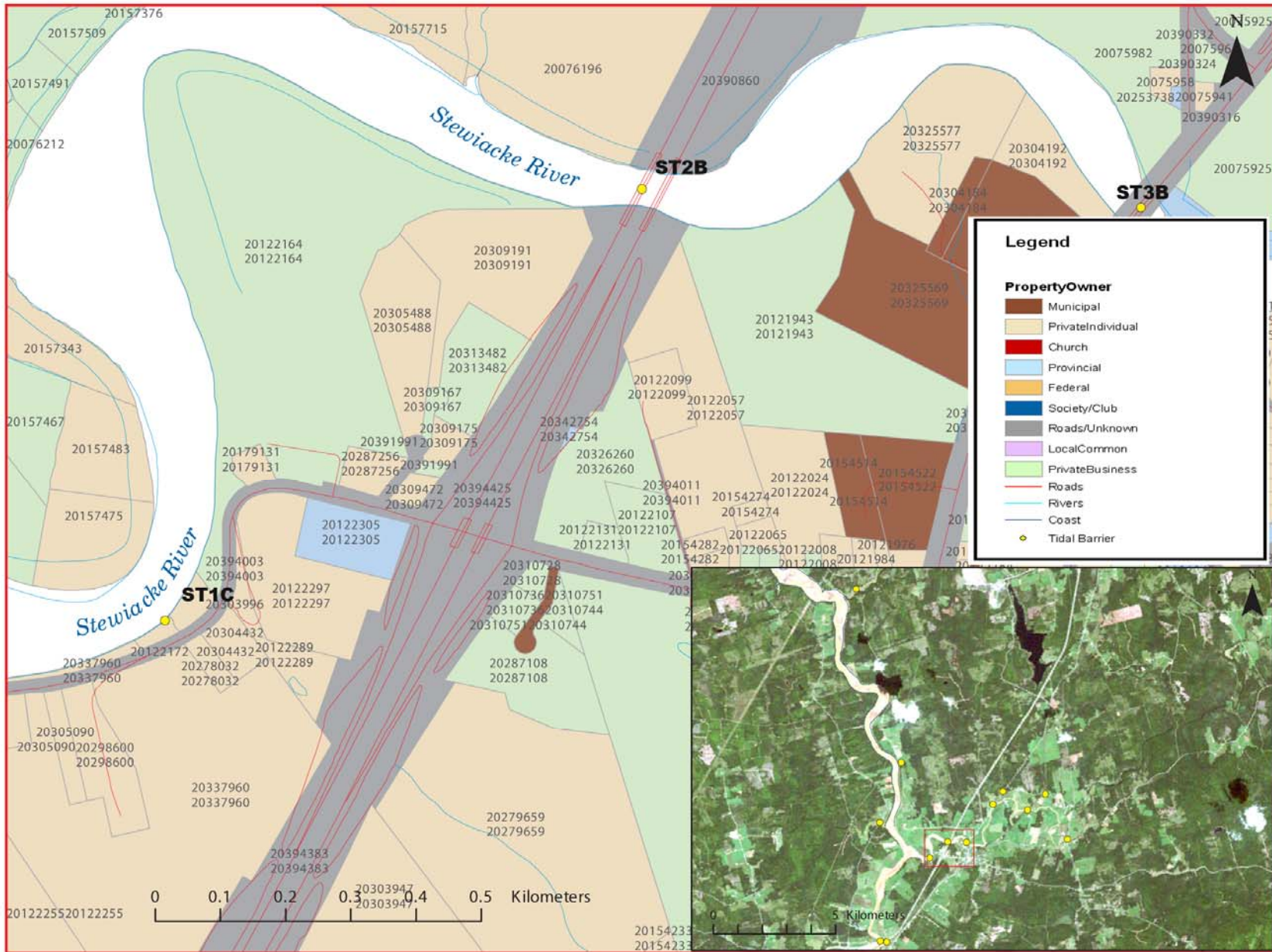


Figure 1



Figure 2



**Figure 3: Property management and tidal barrier data for Nova Scotia (Service Nova Scotia, and Municipal Relations)**

Air Photo Not Available in GIS Database

Access through Land Information Services:

Photo Number: 94015-133