

Site ST1C: Stewiacke River tributary

Date Assessed: 10/07/02

GPS Coordinates: N 45° 8' 18.0''
W 63° 22' 9.1''

Crossing Status: No Restriction

Road Crossing: Culvert, corrugated,
0.75m opening

Crossing Condition: Intact

Restriction Indicators: None

Downstream of Crossing

Creek: 1m wide, some bank slumping

Land: Banks open into Stewiacke River

Upstream of Crossing

Creek: 1m wide smooth, straight flow

Land: Marshland, wooded area, residential

Comments: Maintain size of opening

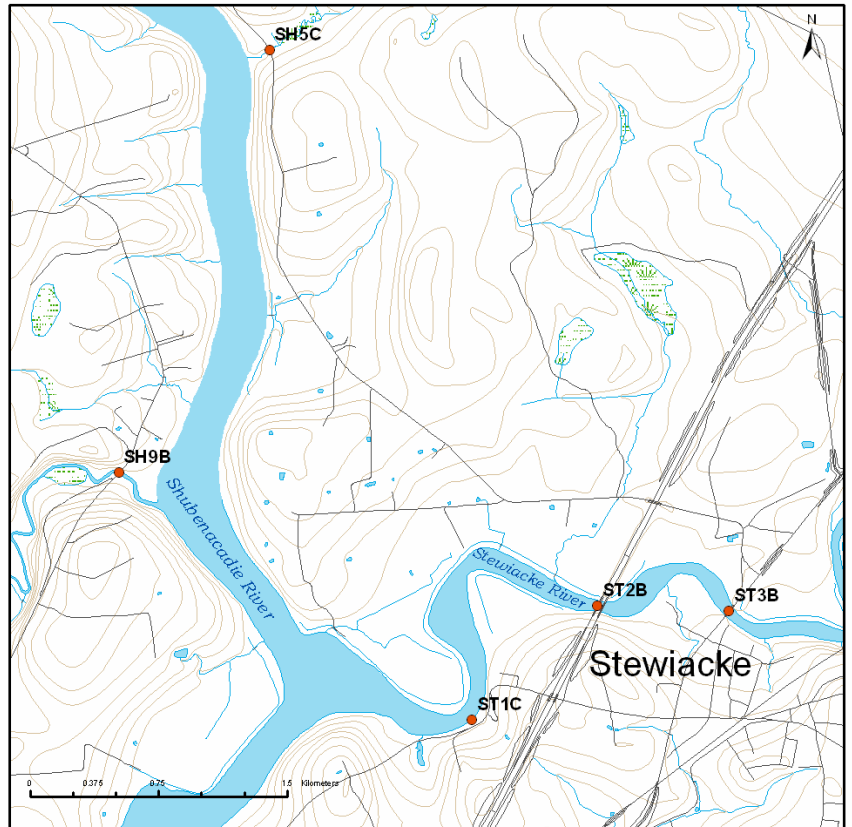


Figure 1



Figure 2

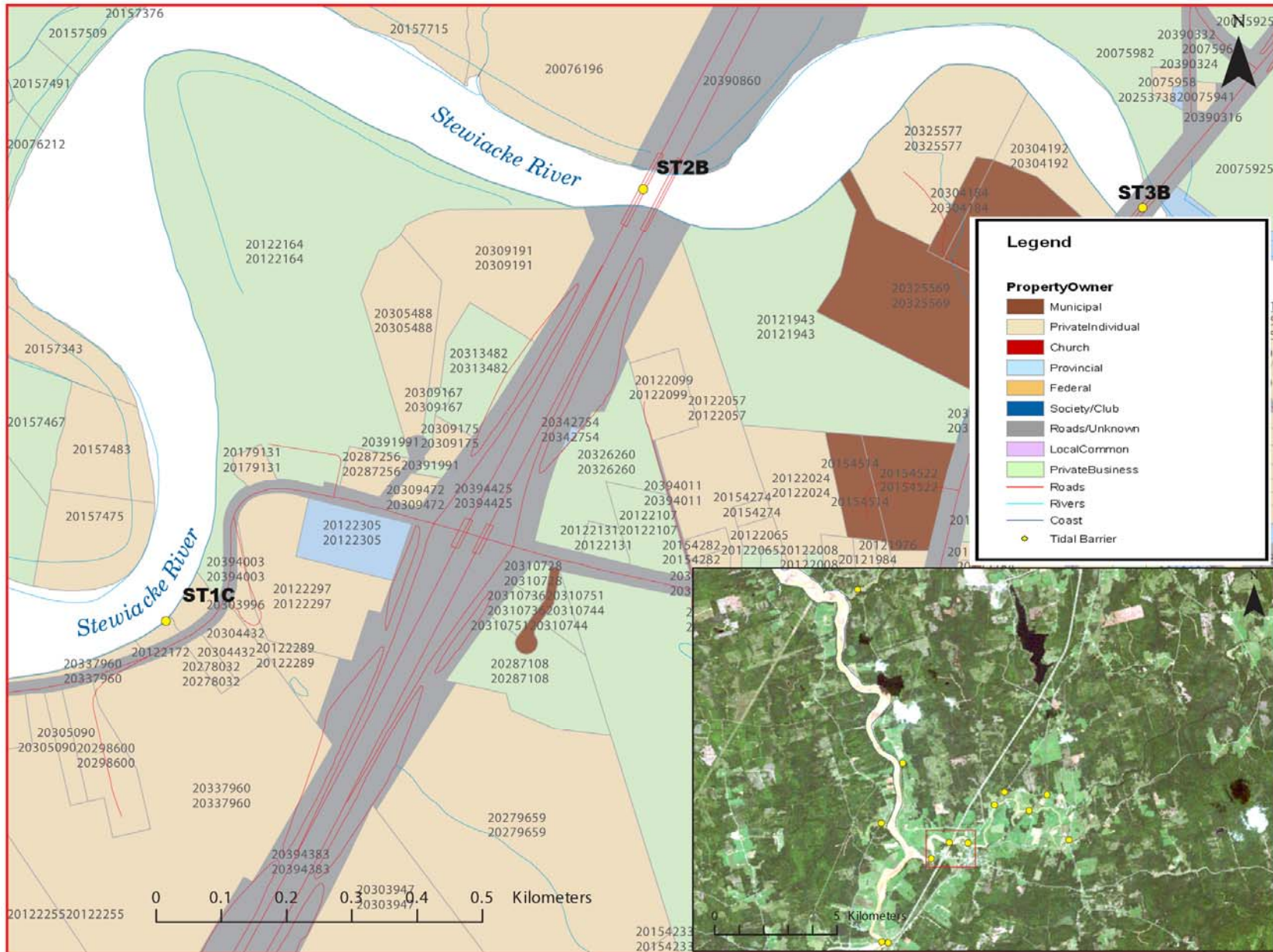


Figure 3:
Property management and tidal barrier data for Nova Scotia (Service Nova Scotia, and Municipal Relations)

Air Photo Not Available in GIS Database

Access through Land Information Services:

Photo Number: 4327-135