

Site SH9B: Rines Brook

Date Assessed: 2004

GPS Coordinates: N 45° 9' 5.5''
W 63° 23' 44.0''

Crossing Status: No Restriction

Road Crossing: Bridge, concrete/steel

Crossing Condition: Intact

Restriction Indicators: None

Downstream of Crossing

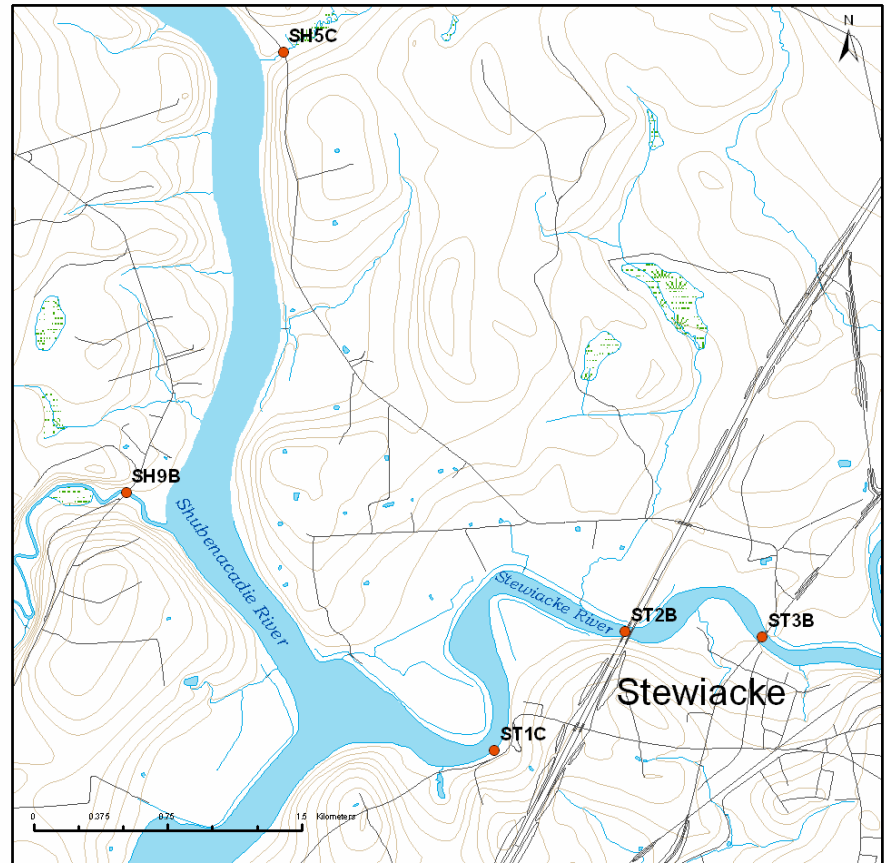
Creek: Tributary of Shudenacadie River

Land: Residential, marshland, farmland

Upstream of Crossing

Creek: N/A

Land: Marshland, farmland, wooded area



Comments: Maintain size of opening. There is also an old wooden structure just upstream of crossing along creek edge, this does not pose any restriction.



Figure 1



Figure 2



Figure 3

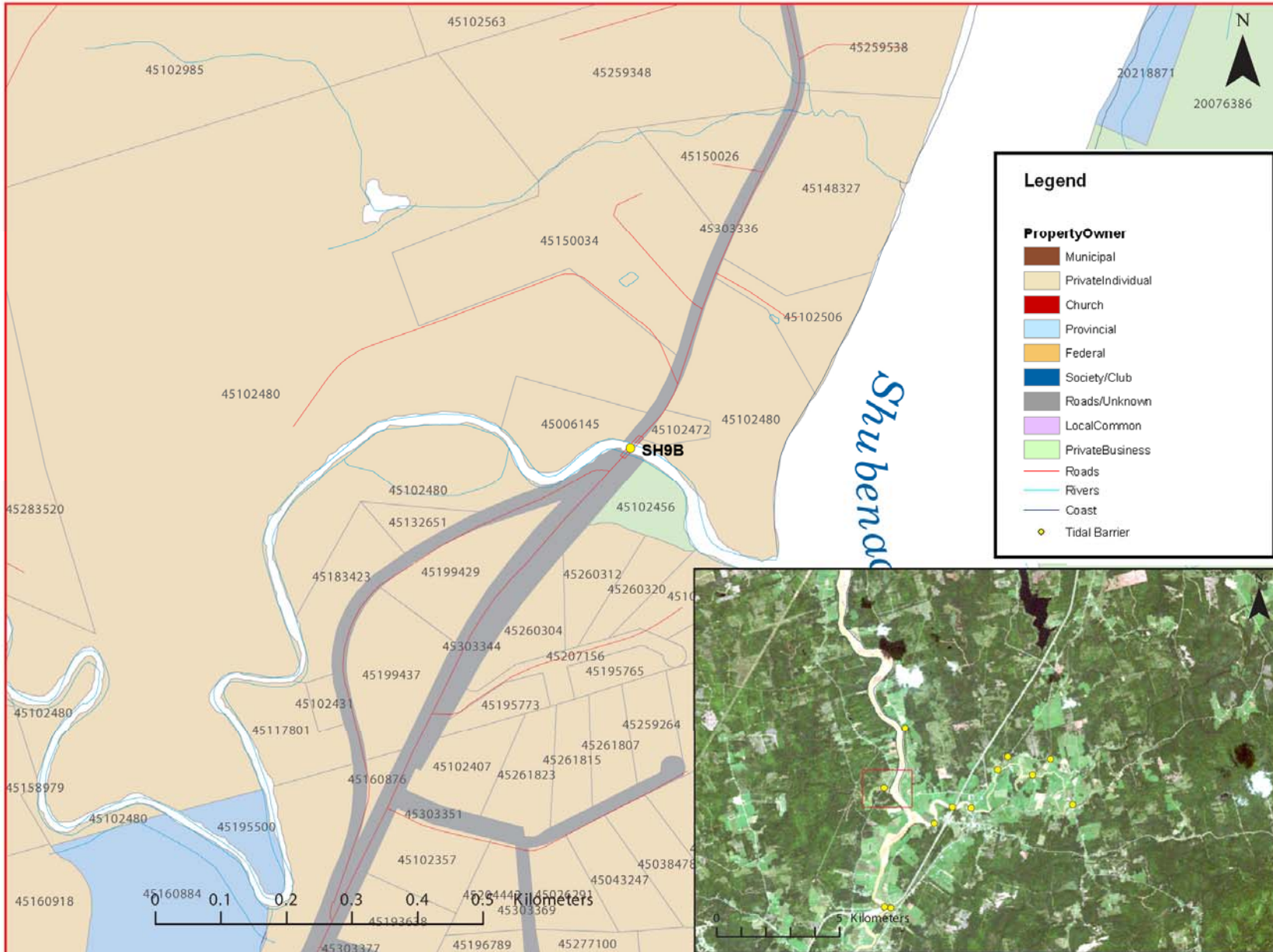


Figure 4: Property management and tidal barrier data for Nova Scotia (Service Nova Scotia, and Municipal Relations)

Air Photo Not Available in GIS Database

Access through Land Information Services:

Photo Number: 94015-129