

**Site SH7A:** Shubenacadie East

**Date Assessed:** 10/07/02

**GPS Coordinates:** N 45° 6' 27.4''  
W 63° 23' 29.2''

**Crossing Status:** Complete Restriction

**Road Crossing:** Aboiteau

**Crossing Condition:** Intact

**Restriction Indicators:**

- Difference in water level
- Scour pool
- Bank slumping
- Aboiteau/Tide gate

**Downstream of Crossing**

**Creek:** 3.5m wide, smooth, straight flow

**Land:** Unused farmland, some marshland

**Upstream of Crossing**

**Creek:** 4m wide, smooth, straight flow

**Land:** Unused farmland, some marshland, residential further upstream

**Comments:** Assess whether land is or will be used for agricultural purposes, if it is not then tide gate could be opened or a larger culvert could be installed to allow for tidal flow and fish passage.



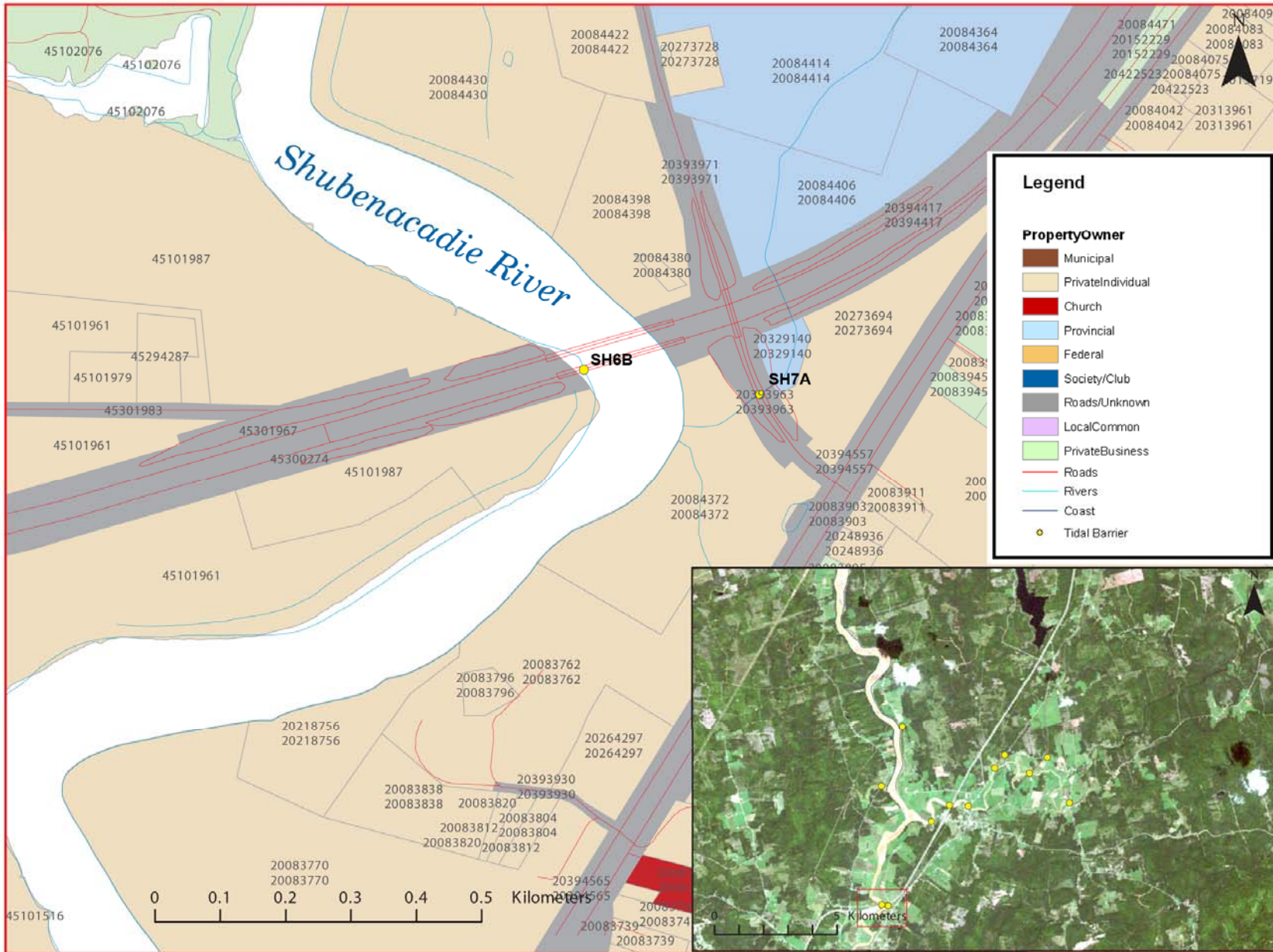
Figure 1



Figure 2



Figure 3



**Figure 4:** Property management and tidal barrier data for Nova Scotia (Service Nova Scotia, and Municipal Relations)

Air Photo Not Available in GIS Database

Access through Land Information Services:

Photo Number: 04319-29