

Site SH5C: Withrow Brook

Date Assessed: 21/06/02

GPS Coordinates: N 45° 10' 24.8''  
W 63° 23' 5.3''

Crossing Status: No restriction

Road Crossing: Culvert, corrugated, 3m

Crossing Condition: Intact

Restriction Indicators: None

Downstream of Crossing

Creek: 4m wide, some bank slumping, smooth and straight flowing

Land: Marshland, wooded area and active farmland

Upstream of Crossing

Creek: 3.5m wide, some bank slumping, smooth and straight flowing

Land: Marshland and active farmland

Comments: At the very least maintain the size of the opening

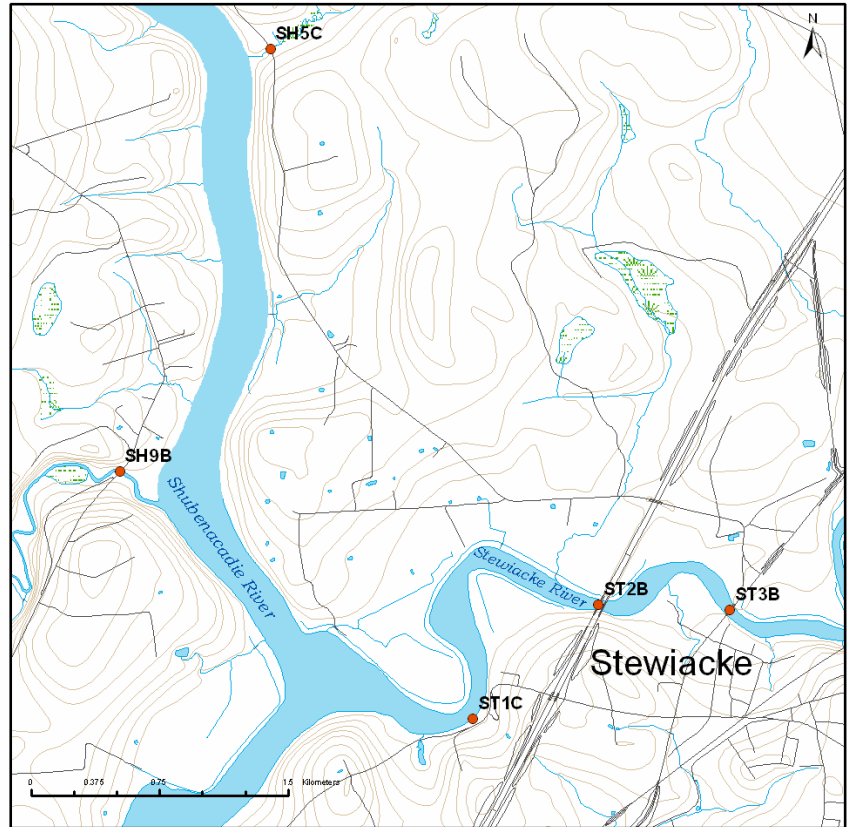


Figure 1



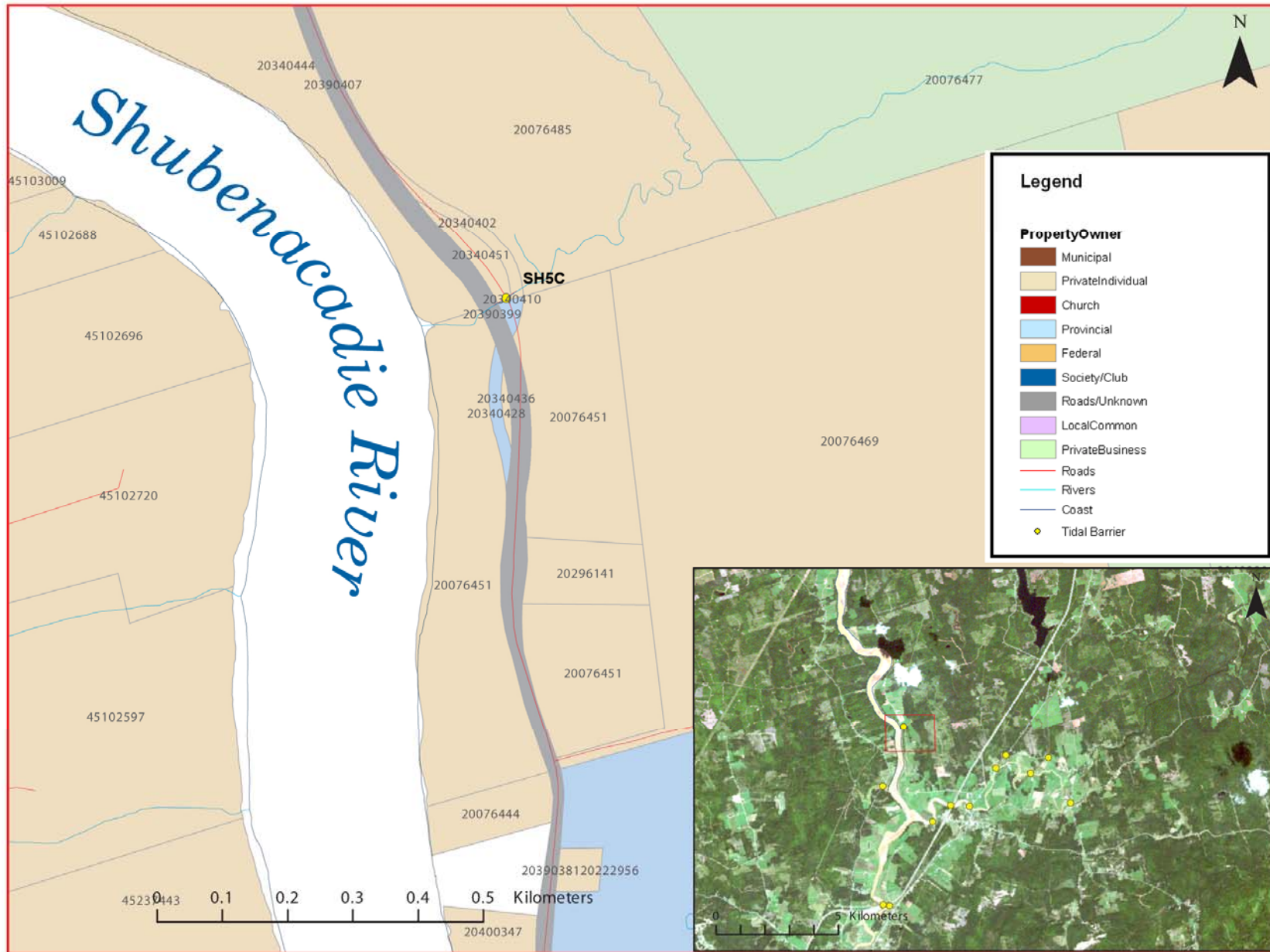
Figure 2



Figure 3



Figure 4



**Figure 5:** Property management and tidal barrier data for Nova Scotia (Service Nova Scotia, and Municipal Relations)

Air Photo Not Available in GIS Database

Access through Land Information Services:

Photo Number: 04319-128