

Site SH3C: Fisher Creek

Date Assessed: 10/07/02

GPS Coordinates: N 45° 15' 49.8''
W 63° 26' 47.9''

Crossing Status: Partial Restriction

Road Crossing: Culvert, corrugated, 2.6m in diameter. The culvert could not be accessed on the downstream end.

Crossing Condition: Intact

Restriction Indicators:
Difference in vegetation
Bank slumping

Downstream of Crossing

Creek: Smooth straight flow, could not access stream to get measurement.

Land: Wooded area, small amount of marshland

Upstream of Crossing

Creek: Smooth straight flow, 6.2m in width

Land: Wooded area

Comments: Culvert diameter is smaller than the stream width causing a partial restriction to tidal flow. Opening could be enlarged.



Figure 1

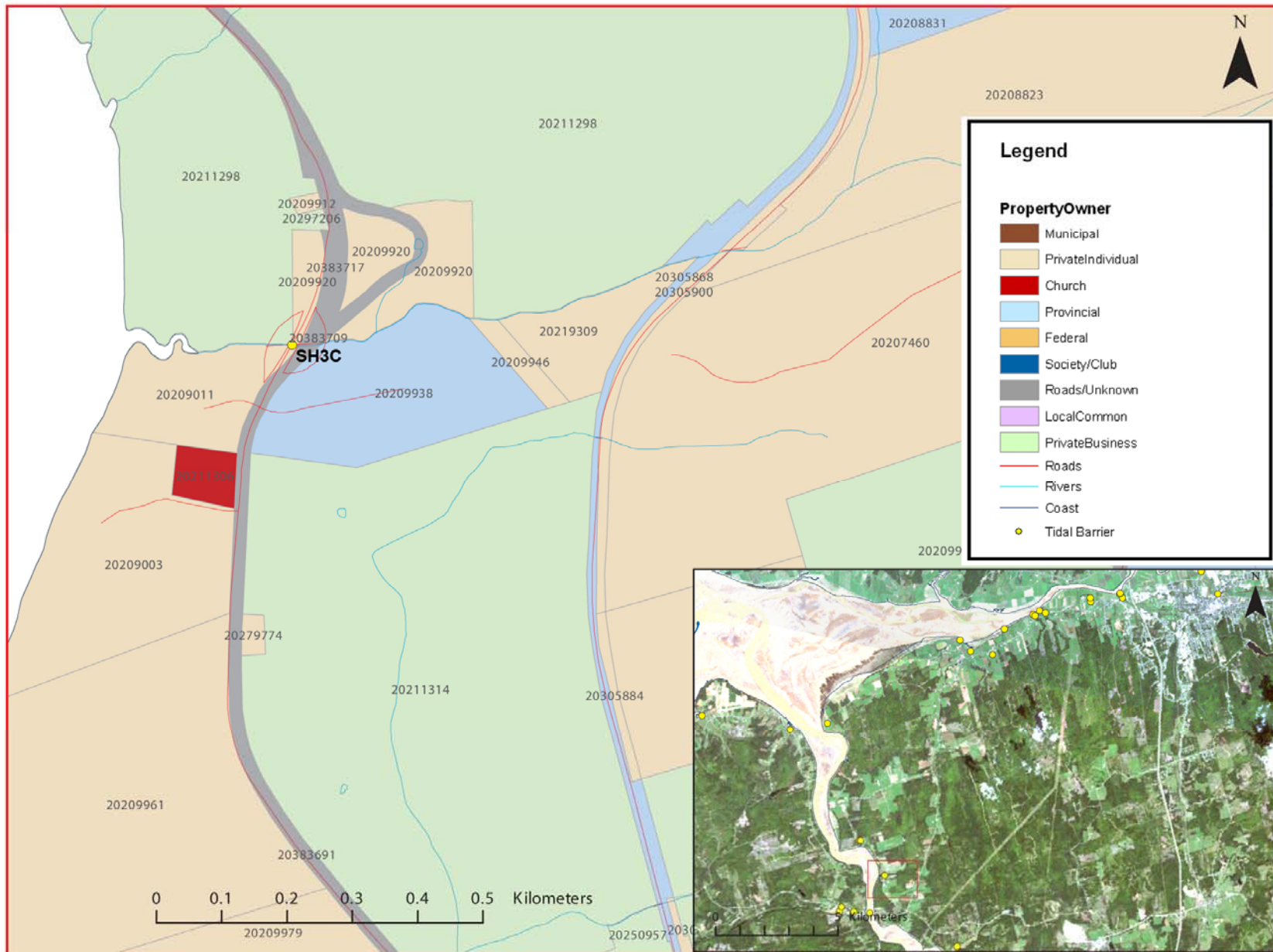


Figure 2:
Property management and tidal barrier data for Nova Scotia (Service Nova Scotia, and Municipal Relations)

Air Photo Not Available in GIS Database

Access through Land Information Services:

Photo Number: 92333-92 or 04322-54